



Round-leaved Sundew

Get involved

If you're interested in protecting and enhancing biodiversity in Bracknell Forest, it doesn't matter how much or little time you have to spare. Here are just a few fun ways for you to help do your bit for biodiversity.

Conservation volunteering



If you're interested in conserving open spaces a host of voluntary organisations with which to get involved and make a difference. For further information see our conservation volunteering leaflet.

Volunteer Wildlife Surveys

We are always looking for enthusiastic people to help carry out surveys for birds, reptiles, mammals and many other species at sites all over the Borough.

Information from surveys helps to direct management of our parks and countryside sites to maximise their value for biodiversity. Request a survey information pack by contacting the Biodiversity Officer.

Make a Record

If you spot any of the Bracknell 24, or if you have any other interesting sightings you can record them online at our website.

Biodiversity Forum

The Forum provides local people interested in wildlife with an opportunity to discuss local issues, share ideas and to have an input into the Council's approach to protecting wildlife within the Borough.



Events

A wide range of events and activities take place across Bracknell Forest throughout the year. These include wildlife talks and educational events for schools, youth groups and children such as pond dipping and mini-beasting.

Useful information

Bracknell Forest Council

Parks & Countryside Service: 01344 354441

Email: rangers@bracknell-forest.gov.uk

Biodiversity Officer: 01344 354125

Email: biodiversity@bracknell-forest.gov.uk

Useful websites

Bracknell Forest Council

Online recording

www.bracknell-forest.gov.uk/wildlifesurveying

Biodiversity

www.bracknell-forest.gov.uk/biodiversity

Parks & Countryside

www.bracknell-forest.gov.uk/parks

Walking

www.bracknell-forest.gov.uk/walking

Natural England (General Enquiry Line)

0845 600 3078

www.naturalengland.org.uk



Other leaflets available

This Biodiversity leaflet is one of the 'Discover' series leaflets produced by Bracknell Forest Council. Further informative leaflets are also available such as wildlife gardening and conservation volunteering.

Key



Parking



Disabled Access



Picnic area



Surfaced path



Discover ...

Biodiversity in Bracknell Forest



Banded Damoiselle - James Parnwell

Your guide to finding wildlife in the Borough

What is biodiversity?

Biodiversity is the variety of life. It includes all forms of wildlife from the common to the rare and this supports the well being of the natural world including ourselves.

Biodiversity in Bracknell Forest

Bracknell Forest is lucky enough to have a rich and diverse landscape, containing a wide range of habitats that support a large variety of plants and animals.

Over 20% of the borough has been recognised as having a high biodiversity value and is protected by local, national and international designations. Many of these picturesque areas are open to the public.

Explore the places that you can visit for wildlife using the map overleaf.



Roe Deer - Peter Eggleton

Bracknell Forest Biodiversity Action Plan (BAP)

The Bracknell Forest BAP lists the actions necessary to conserve 6 habitats and 24 species that are important in the borough. Bracknell Forest Council works in partnership with a wide range of landowners and wildlife organisations who together take action to help biodiversity in your area.

Here's some information on the 'Bracknell 24' and find out how you can help us protect our biodiversity.

	Bracknell 24	What you can do ...
WOODLAND AND SCRUB	Bullfinch	Plant native trees and shrubs that provide fruit in your garden
	Wild service tree	Collect local seed and plant a native hedgerow
	Glow worm	Record your sightings
	Stag beetle Violet click beetle	Make a log pile
	Hobby	Go birdwatching and record your sightings
MEADOW AND PASTURES	Cowslip Devils-bit Scabious Ragged Robin	Collect local seed and plant it in your garden Create a wildflower meadow
FARMED LAND	Barn Owl Skylark	Go birdwatching and record your sightings (dusk is a good time for owls)
HEATHLAND AND BOGS	Dartford Warbler Woodlark Nightjar	When visiting heathlands, take your binoculars and keep your canine friend on a lead!
	Round-leaved Sundew	Become a volunteer surveyor to see these rare plants
	Brilliant Emerald Dragonfly Small Red Damselfly	Create a pond in your garden
	Silver-studded Blue butterfly	Become a volunteer surveyor to see these rare butterflies
WETLANDS	Kingfisher Brown Trout	Visit rivers and ponds and record your sightings
	Water Vole Great Crested Newt	Become a volunteer surveyor
URBAN	Swift Noctule Bat	Put up bat/swift boxes and join an organised bat walk

Important places for wildlife

Your guide to designations

Special Protection Area (SPA)

Designated for habitat that supports internationally rare bird species under the European Union's Birds Directive. In Bracknell Forest, the SPA covers heathland, bog and woodland habitats that support important populations of Woodlark, Nightjar and Dartford warbler. Please note these are ground-nesting birds sensitive to visitors with dogs.

INTERNATIONAL IMPORTANCE

Special Area of Conservation (SAC)

Designated for habitats under the European Union's Habitats Directive. Eastern parts of Windsor Forest and Great Park SAC lie within Bracknell Forest and support ancient woodland species such as the Violet Click Beetle.

INTERNATIONAL IMPORTANCE

Sites of Special Scientific Interest (SSSI)

As the UK's main designation for important wildlife habitats, this status recognises the best wildlife and geological sites for nature whilst granting protection from development and any potentially damaging operations. There are 10 SSSIs in Bracknell Forest, these are designated by Natural England.

NATIONAL IMPORTANCE

Local Nature Reserve (LNR)

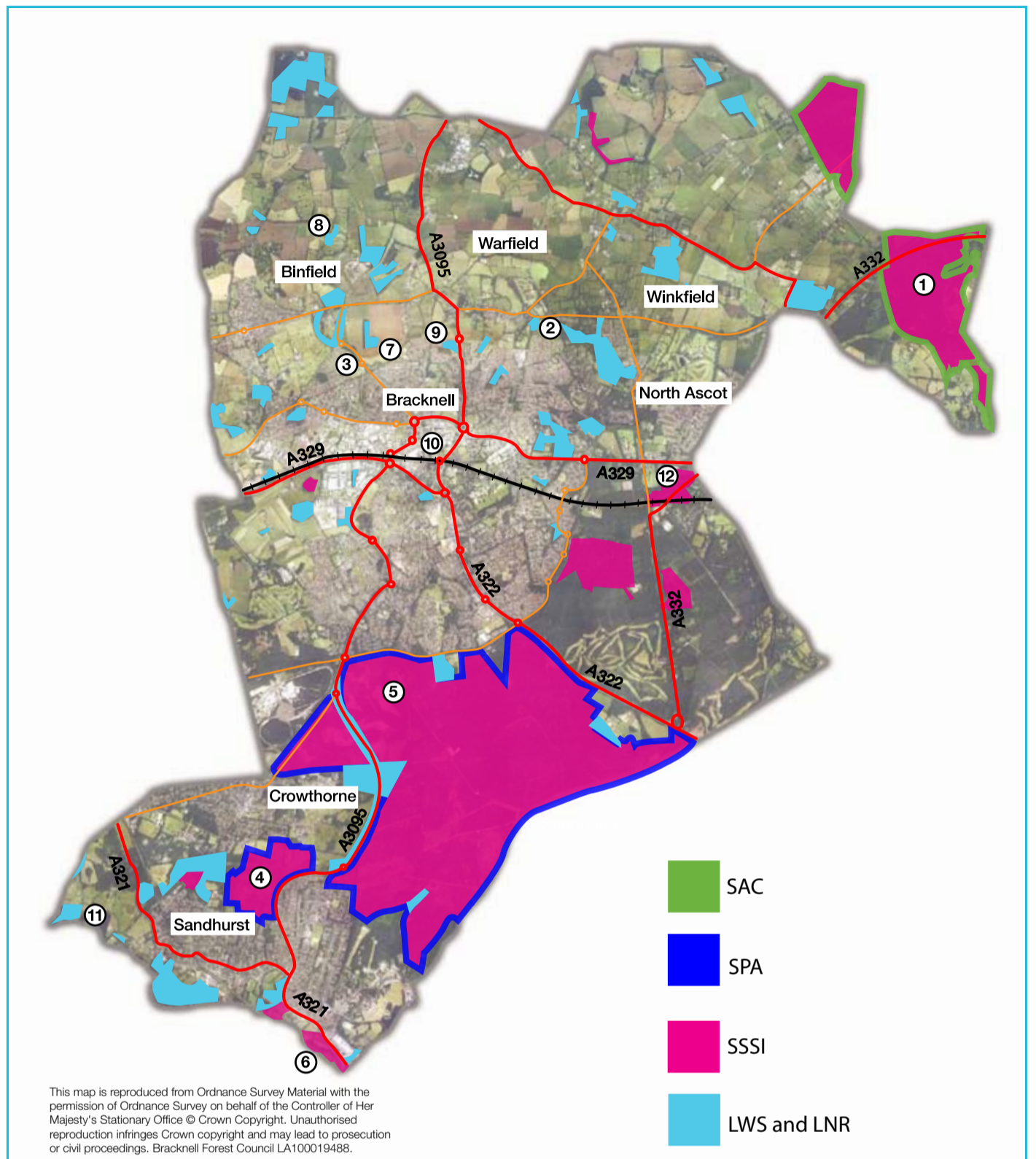
There are 10 sites in the borough earning LNR status with wildlife or geological features that are of special local interest and provide access to nature for local communities.

LOCAL AND REGIONAL IMPORTANCE

Local Wildlife Site (LWS)

Approximately 60 sites in the borough are designated as a LWS by Berkshire Nature Conservation Forum in order to recognise high nature conservation value of local or regional importance. These are given protection through the planning process and many are actively managed for conservation.

This map shows just a few of the sites that you can visit for wildlife. Areas are colour coded according to their designation.



Woodland

① Windsor Great Park

An area of ancient woodland with many significant trees and rare deadwood invertebrates. Owned by the Crown Estate.



② Hayley Green Wood (at Westmorland Park)

A broadleaved woodland with areas of coppice and part of Big Wood. Managed by Bracknell Forest Council.



③ Jocks, Tinkers and Temple Copses

Small woodland havens supporting hazel coppice, bluebells and Wild Service Trees. Owned by Bracknell Forest Council.



Heathland and bogs

④ Wildmoor Heath

A diverse heathland and bog site known to provide habitat for rare ground nesting birds. Jointly owned and managed by Bracknell Forest Council and Berks, Bucks and Oxon Wildlife Trust.



⑤ Caesar's Camp

A heathland within Swinley Forest. Managed by Bracknell Forest Council and owned by The Crown Estate.



Grassland

⑥ Shepherd Meadows

A species-rich grassland alongside the Blackwater River which includes a grazed pasture and an annually cut meadow. Owned and managed by Bracknell Forest Council.



⑦ Garth Meadows

Neutral grassland meadows next to The Cut River which support typical meadow species. Owned and managed by Bracknell Forest Council.



Farmland

⑧ Binfield and Warfield Rights of Way including the Hill Farm Circuit

A countryside walk around mixed farmland with arable fields, pasture and hedgerows.



⑨ Larks Hill

An arable field and orchard designed to encourage wildlife typical of the traditional British countryside. Owned and managed by Bracknell Forest Council.

Urban

⑩ Blooming biodiversity walk

A route around Bracknell town centre that includes greenspace and roadside verges of wildlife value.



Wetland

⑪ Blackwater Valley

Part of the route from Swan Lane to Longwater Road links a large group of lakes and wetland areas including Horseshoe Lake managed by Bracknell Forest Council. The Blackwater Valley path is managed by the Blackwater Countryside Partnership.



⑫ Englemere Pond

This lake supports a large reedbed and bog areas surrounded by woodland and some heathland patches. Owned by the Crown Estate and managed by Bracknell Forest Council.



Wild Service Tree