

## **Anti-Social Behaviour information on CADIS**

For current trends [click here](#).

For statistics for 2008/9 [click here](#).

### Notes:

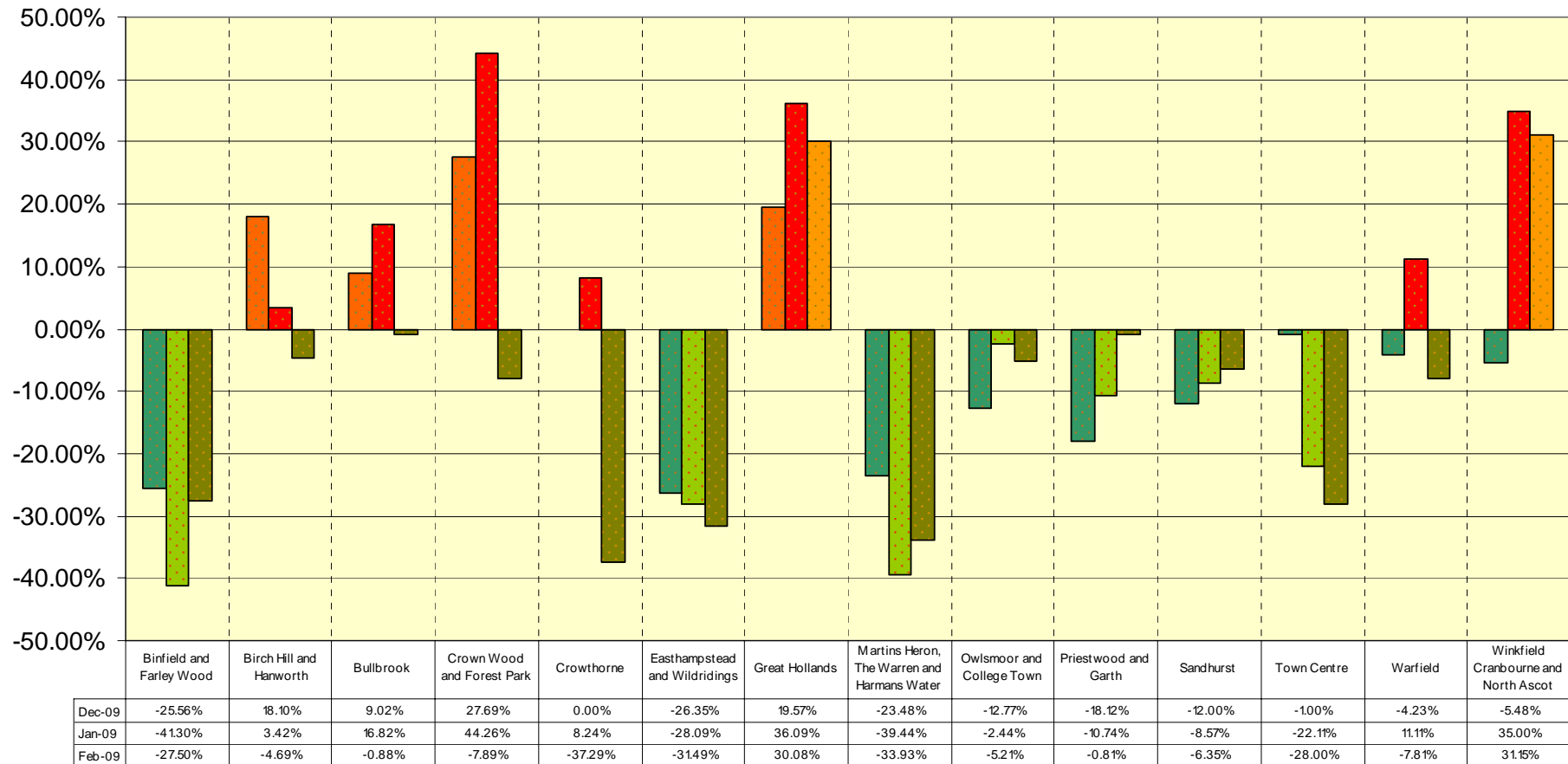
1. The reported site of some incidents is not detailed enough to be addressable so this very small minority is not included in CADIS.
2. The numbers may vary very slightly from time to time as incidents are reclassified.
3. All the information here is based on un-audited data.

## **Current Trends**

Home Office guidelines recommend comparing statistics for the most recent 3 months with the same 3 months in the previous year. The graph on the next page shows this pictorially for each neighbourhood.

Note that as of April 2009 data on fly tipping dealt with by Bracknell Forest Homes is included in these figures. This impacts quite dramatically on neighbourhoods with large numbers of Bracknell Forest Homes' properties and will have a big influence on the year on year comparisons.

## Percentage change in Level 2 Anti-Social Behaviour recorded on CADIS using three month rolling averages\*



\* Three month rolling averages are worked out by adding the numbers of incidents for this and the previous 2 months for each neighbourhood.

This number is then compared to the same period last year to see the variation year on year.

The above graph shows these comparisons for the most recent 3 months.

For example, the figure for Binfield and Farley Wood of -25.56% in December represents the percentage change between the total number of incidents in October - December 2008 and the total number of incidents in October - December 2009. By doing this calculation over three month periods it allows for seasonal factors and reduces the extent to which percentages are influenced by monthly variations.

Further analysis shows for the last 3 months (**December 2009 - February 2010**) that there were 0.0118 Level 2 incidents per head of population across the borough (using the population figure of 109,617 recorded in the 2001 Census).

For each neighbourhood these figures are further broken down below by:

- **Numbers per Head of Population for Neighbourhood** – this is calculated by dividing the total number of Level 2 incidents in the Neighbourhood by the estimated population<sup>1</sup> of the Neighbourhood. Note that Bracknell Town Centre has a large number of visitors and a relatively small population so this may result in a relatively high average compared to the borough-wide figure.
- **Number of Incidents** – this is the total number of Level 2 incidents that took place in this Neighbourhood for the period stated
- **Difference** – this compares the current number of Level 2 incidents for the period with the level during the same period 12 months previously. The positive or negative number indicates the difference between last year and this year. For example, -9 indicates that the number of incidents has fallen by nine compared with the same period 12 months ago.

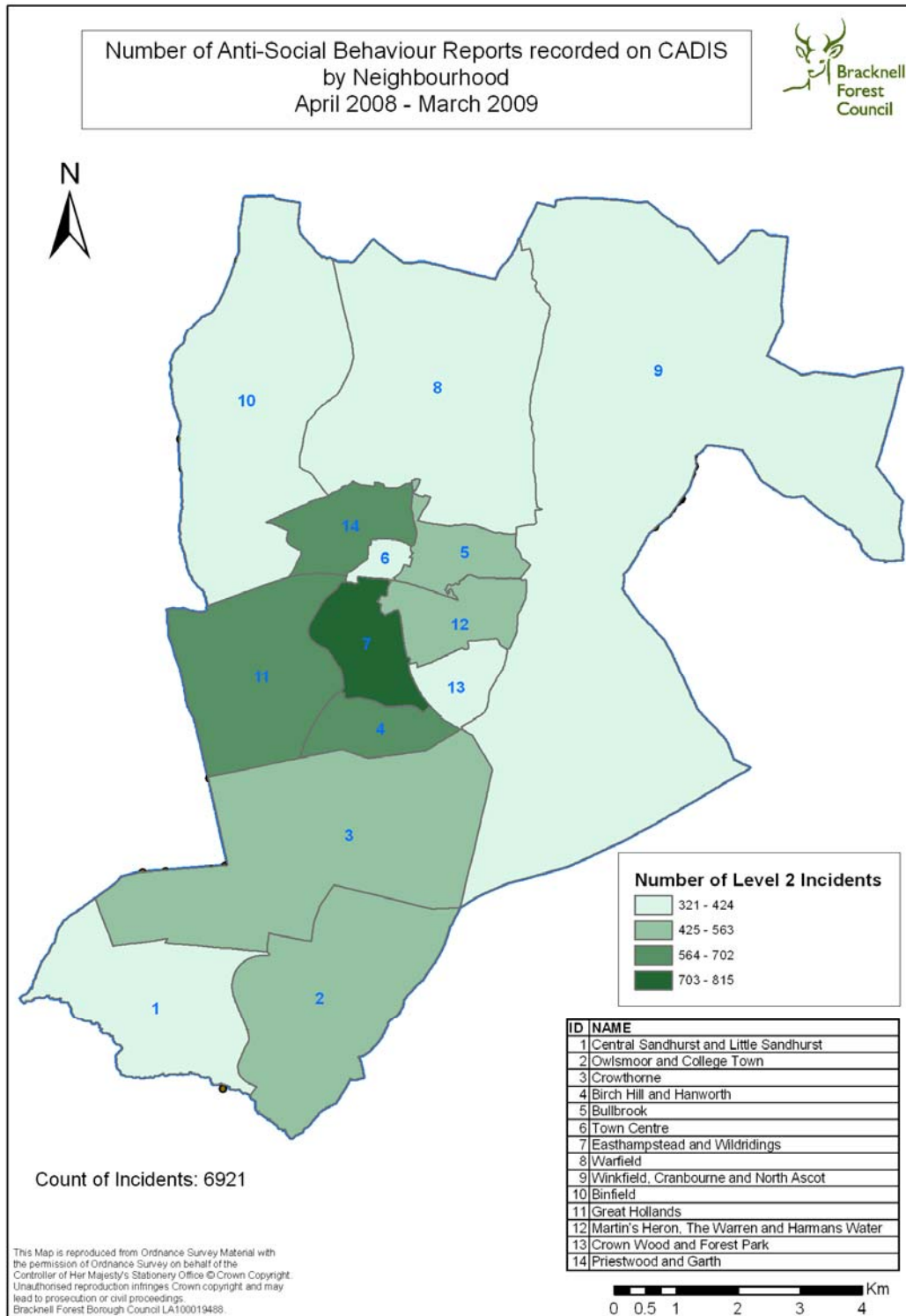
Neighbourhood	Estimated Population of Neighbourhood	Number of Incidents per Head of Population for Neighbourhood	Number of Incidents	Difference compared to the same period in the previous year
Binfield and Farley Wood	7475	0.0078	58	-22
Birch Hill and Hanworth	8851	0.0138	122	-6
Bullbrook	5038	0.0224	113	-1
Crown Wood and Forest Park	8466	0.0083	70	-6
Crowthorne	6711	0.0110	74	-44
Easthampstead and Wildridings	8591	0.0144	124	-57
Great Hollands	9992	0.0173	173	40
Martins Heron, The Warren and Harmans Water	7563	0.0098	74	-38
Owlsmoor and College Town	12309	0.0074	91	-5
Priestwood and Garth	7386	0.0167	123	-1
Sandhurst	8494	0.0069	59	-4
Town Centre	364	0.1978	72	-28
Warfield	9226	0.0064	59	-5
Winkfield Cranbourne and North Ascot	9151	0.0087	80	19

Click [here](#) to return to top of document.

<sup>1</sup> \* All population calculations are based on the 2001 Census from the Office of National Statistics – see [www.statistics.gov.uk](http://www.statistics.gov.uk)

## Anti-Social Behaviour in 2008/9

In 2008/9 there were 6921 Level 2 incidents representing a 14.8% fall on 2007/8 figures. These were distributed across the borough as in the map below:



## **Trends**

There were particularly large falls in numbers of reports of:

- Untaxed vehicles (down 27%)
- Dangerous driving (includes displaying, speeding and reports of mini motorbikes and fell by 25%)
- Assaults (those not recorded as a crime and down by 19%)
- Domestic noise complaints (down 18%)
- Secondary fires (fell by 10%)

Increases were observed in:

- Graffiti/fly posting (up 39%)
- Complaints of dogs barking (up 27%)
- Neighbour disputes (up 18%)

## **Crime and Disorder Reduction Partnership (CDRP) Plan 2008-11**

As part of the CDRP Plan 2008-11, 6 key indicators of anti-social behaviour are selected each year, either because of the high numbers or because of their impact on the borough. These indicators were addressed by the Anti-Social Behaviour Sub-Group, the Cleaner Borough Group and the Graffiti Sub-Group of the CDRP.

During 2008/9 these indicators were as follows with the resultant change in numbers indicated:

Dangerous Driving	-25.0%
Dumped Rubbish and Fly Tipping	-16.1%
Harassment	-6.3%
Noise reports to the police and Domestic Noise complaints to the council	-3.7%
Road Hazard	-8.5%
Vandalism	-38.4%

Also as part of the Plan, three neighbourhoods with the highest number of incidents per 1000 households were selected and actions taken in these particular areas. Reductions here were achieved in two of the neighbourhoods of 7.5% and 11.8% and no increase in the third.

## **Some of the actions taken by Bracknell Forest Council**

Some of the key anti-social behaviour types reported by Bracknell Forest Council are dumped rubbish, fly tipping and graffiti. The Cleaner Borough Group formed at the start of 2008 has focussed on these and made several inroads into addressing the problems:

- Signs warning of the potential for prosecution erected at vulnerable sites
- Cameras used to identify offenders
- 2 formal cautions for people caught fly tipping at the council's recycling centre
- Several prosecutions pending regarding fly tipping
- 3 Fixed Penalty Notices for littering
- A prosecution is pending for fly posting
- Letters sent to all residents of streets with high numbers of dumped rubbish and fly tipping incidents advising them of the dangers of dumped rubbish and the potential fire hazards
- Improved layout at recycling sites
- Formation of Graffiti Working Group

### **Some of the actions taken by Thames Valley Police**

Operation Lion Cub, which actively focuses on anti-social behaviour on Friday and Saturday evenings, continues to run successfully. During the year there have also been increased police visits to problem areas and Police Community Support Officers (PCSOs) have been addressing road hazard issues where they have been made aware of issues involving parking. Dangerous driving has been addressed by additional wardening and in particular work has been going on to address the problem of nuisance vehicles in Morgan Recreation Ground car park, Crowthorne. PCSOs continue to issue on the spot warnings for anti-social use of vehicles which are followed up by warning letters from the Anti-Social Behaviour Coordinator.

### **Some of the actions taken by Royal Berkshire Fire and Rescue Service**

As well as their normal working practice, Royal Berkshire Fire and Rescue Service (RBFRS) have actively worked with the CDRP on Partnership Patrols. These have taken place in areas of concern established by CADIS and have identified any anti-social behaviour in the neighbourhoods patrolled. Problems highlighted include graffiti, void property (in particular garages either in a dangerous condition or with potentially flammable materials insecure inside), fly tipping and dumped rubbish.

As part of the Anti-Social Behaviour Sub-Group work, a Void Building Protocol is being drafted and a list of empty business premises circulated for monitoring, both actions relevant to fire prevention.

- **Anti-Social Behaviour in 2008/9 by Neighbourhood**

<b>Neighbourhood</b>	<b>Number of Level 2 Incidents</b>	<b>Types of Level 2 Incidents</b>
Binfield	411	<a href="#">Click here</a>
Birch Hill and Hanworth	651	<a href="#">Click here</a>
Bullbrook	499	<a href="#">Click here</a>
Central Sandhurst and Little Sandhurst	419	<a href="#">Click here</a>
Crown Wood and Forest Park	349	<a href="#">Click here</a>
Crowthorne	505	<a href="#">Click here</a>
Easthampstead and Wildridings	815	<a href="#">Click here</a>
Great Hollands	643	<a href="#">Click here</a>
Martins Heron, The Warren & Harmans Water	519	<a href="#">Click here</a>
Owlsmoor and College Town	461	<a href="#">Click here</a>
Priestwood and Garth	619	<a href="#">Click here</a>
Town Centre	374	<a href="#">Click here</a>
Warfield	321	<a href="#">Click here</a>
Winkfield, Cranbourne and North Ascot	335	<a href="#">Click here</a>

## Binfield:

Complaint Type	Apr-08	May-08	Jun-08	Jul-08	Aug-08	Sep-08	Oct-08	Nov-08	Dec-08	Jan-09	Feb-09	Mar-09	Grand Total
Arson / Fire	2										1		3
Assault			2										2
Dangerous Driving	6	3	4	9	3	3	4	4	4	7	2	4	53
FDR1 Fire			1	1		1			1	2	1		7
Fight		2			1		1		1	1	1		7
Firearm				1		1			1				3
Fly Tipping			2				1	1					4
Graffiti/Fly Posting	1			2		1	3	1				2	10
Harassment	1	2	1	6		2	3	1	4	4	4	1	29
Neighbour Dispute							1						1
Noise	2	4	3	5	6	4	1	1				2	28
Noise - Dogs Barking			1	2	1							1	5
Noise - Domestic	1	3		1	1		2	1		1	1	3	14
Rangers - Arson					1								1
Rangers - Dumped Rubbish/Fly Tipping					1	1							2
Road Hazard	1	4	1	2	3	4	1	2		2	1	2	23
Secondary Fire				2	1								3
Street Care - Dumped Rubbish	2	4	1	4	1	1	3		4	4	2	1	27
Street Care - Fly Tip	14	6	5	10	6	6	8	10	6	8	3	9	91
Threat	2		1	2									5
Town/Parish - Broken Glass												1	1
Town/Parish - Fly Tipping	8	2	3	3		2	5	6	2	3		4	38
Town/Parish - Heavy Littering	2												2
Town/Parish - Smoke/Fire				1		2			1			1	5
Town/Parish - Untaxed Vehicle								1					1
Town/Parish - Vandalism	3	9	5	9	3		1	1	2	4	1		38
Untaxed Vehicles			2		2								4
Vandalism			1	1	1				1				4
Grand Total	45	39	33	61	31	28	34	29	27	36	17	31	411

Click [here](#) to go back to list of Neighbourhoods.

## Birch Hill & Hanworth:

Complaint Type	Apr-08	May-08	Jun-08	Jul-08	Aug-08	Sep-08	Oct-08	Nov-08	Dec-08	Jan-09	Feb-09	Mar-09	Grand Total
Abandoned Vehicle - Destruction	1												1
Arson / Fire						2						2	4
Assault		1			1	1	1			1	1		6
Burnt Out Vehicle	1												1
Dangerous Driving	4	8	16	22	7	8	4	4	7	1	7	13	101
FDR1 Fire					1	1							2
Fight	1	1	5	2			3			1		2	15
Firearm					1	1							2
Fly Tipping							1	2		1		1	5
Graffiti/Fly Posting	1		2	2		1		3	1	1	2	1	14
Harassment	6	12	10	10	10	4	11	10	5	6	9	8	101
Indecency					1								1
Indecent Exposure	1												1
Neighbour Dispute	3	2	1	3	1	3		3	3	4	1	2	26
Noise	7	13	7	3	8	5	1	2	2	8	2	6	64
Noise - Dogs Barking	1	1	1	2			1				1		7
Noise - Domestic	5	8	9	8	8	3	3	1		2		2	49
Rangers - Arson		1											1
Rangers - Dumped Rubbish/Fly Tipping						1				1		1	3
Rangers - Vandalism						4							4
Road Hazard	9	9	3	3	3	4	3	1	1	2	5	2	45
Secondary Fire	1	2	1						1			1	6
Street Care - Dumped Rubbish	4	10	7	6	3	1	4	1	3	6	2	1	48
Street Care - Fly Tip	3	2	12	10	4	6	5	6	5	3	5	5	66
Street Care - Hypodermic Syringes				1		1		1					3
Threat	2	1	1		1		3		1	1	1	2	13
Town/Parish - Fly Tipping					1								1
Town/Parish - Smoke/Fire							1						1
Town/Parish - Vandalism		1	1	2	1			1	2	1	1	1	11
Untaxed Vehicles	2		3	1		4	1	3		2	8	2	26
Vandalism	1	2	2	1		2		1	3	2	6		20
Weapons / Explosives				1				1				1	3
Grand Total	53	74	81	77	51	52	42	40	34	43	51	53	651

Click [here](#) to go back to list of Neighbourhoods.

## Bullbrook:

Complaint Type	Apr-08	May-08	Jun-08	Jul-08	Aug-08	Sep-08	Oct-08	Nov-08	Dec-08	Jan-09	Feb-09	Mar-09	Grand Total
Arson / Fire						2		1			1		4
Assault	1	2	2		4				1		1	1	12
Burnt Out Vehicle								1					1
Dangerous Driving	5	5	5	5	4		3	3		5	1	7	43
Drug related					1			2					3
Fight	2		5	1		2	2	2	1	2	2	2	21
Firearm						1			2				3
Fly Tipping							1		1	1			3
Graffiti/Fly Posting	1				1	1	3	4		1	1	2	14
Harassment	10	7	13	6	6	8	9	8	10	7	11	7	102
Indecent Exposure					1								1
Neighbour Dispute	5		5		5	1		1			2	3	22
Noise	5	5	5	8	7	4	4	2	11	3	8	5	67
Noise - Dogs Barking	2	1			3	2	1				1		10
Noise - Domestic	1	1	4	5	3	5	4	1		2	5	2	33
Rangers - Assault								1					1
Rangers - Dumped Rubbish/Fly Tipping								3	5		2		10
Rangers - Vandalism									1		1		2
Road Hazard	2	9	5	4	3	1	7	4	2	2	3	4	46
Secondary Fire				2	1	1	2				1	1	8
Street Care - Dumped Rubbish	1	3				1		1		3	1	1	11
Street Care - Fly Tip	3	4		3	2		5	1	3	2		5	28
Street Care - Hypodermic Syringes	2	1	2		2		1						8
Threat	2		1	1	2	4	1	1	1	1		2	16
Town/Parish - Broken Glass				1	2								3
Town/Parish - Heavy Littering					1								1
Town/Parish - Vandalism						1							1
Untaxed Vehicles			1	2		1	1				1	1	7
Vandalism	2			2	1		1			1	2	1	10
Weapons / Explosives				2		1		3			2		8
<b>Grand Total</b>	<b>44</b>	<b>38</b>	<b>48</b>	<b>42</b>	<b>49</b>	<b>36</b>	<b>45</b>	<b>39</b>	<b>38</b>	<b>30</b>	<b>46</b>	<b>44</b>	<b>499</b>

Click [here](#) to go back to list of Neighbourhoods.

## Crown Wood & Forest Park:

Complaint Type	Apr-08	May-08	Jun-08	Jul-08	Aug-08	Sep-08	Oct-08	Nov-08	Dec-08	Jan-09	Feb-09	Mar-09	Grand Total
Abandoned Vehicle - Destruction	1							1					2
Arson / Fire	1		1	1			1						4
Assault		1			2					1			4
Burnt Out Vehicle										1			1
Dangerous Driving	4	1	7	5	1		2	1		3	1	2	27
Drug related				1									1
FDR1 Fire	1		1			1				1			4
Fight	1	3				1		1				2	8
Firearm	1	1	1										3
Fly Tipping				1			2	1			1		5
Graffiti/Fly Posting		1		1			1						3
Harassment	2	4	2	6	8	3	5	3	5	3	2	3	46
Indecent Exposure						1				1			2
Neighbour Dispute	1			2	5	1	1	1	4		6	3	24
Noise	6	3	2	6	7	3	1		4	1	4	7	44
Noise - Dogs Barking	1	3	1		1		1						7
Noise - Domestic	1	1	2	3	1	3	1		2	1	4	4	23
Rangers - Drugs						1							1
Rangers - Dumped Rubbish/Fly Tipping					2		1						3
Road Hazard		1	1	1		1	1			3	2	1	11
Secondary Fire	2	1	2	2			1						8
Street Care - Dumped Rubbish	4	3	6	3	3	3	3	1	4	3		3	36
Street Care - Fly Tip	6	2	3	7	3	3	4	1	4	2	4	7	46
Street Care - Hypodermic Syringes						1							1
Threat	1											1	2
Town/Parish - Broken Glass					4								4
Town/Parish - Vandalism						1							1
Untaxed Vehicles	1	2	1	3			1	2	1		3	2	16
Vandalism	1		1	1	1	2				1			7
Weapons / Explosives				1					3	1			5
Grand Total	35	27	31	44	38	25	26	12	27	22	27	35	349

Click [here](#) to go back to list of Neighbourhoods.

## Crowthorne:

Complaint Type	Apr-08	May-08	Jun-08	Jul-08	Aug-08	Sep-08	Oct-08	Nov-08	Dec-08	Jan-09	Feb-09	Mar-09	Grand Total
Arson / Fire	1	2		1				1			2	2	9
Assault		1				1	1				3		6
Dangerous Driving	4	2	3	7	12	7	6	6	6	6	8	6	73
FDR1 Fire						1		1					2
Fight	1	2	3	1	1		1	2	1	1	1	1	15
Firearm					1							1	2
Fly Tipping											1	1	2
Graffiti/Fly Posting	1			1			1						3
Harassment	6	3	5	2	6	5	2	1	3	3	4	9	49
Indecent Exposure	1					1					1		3
Neighbour Dispute		1	1		1	1						1	5
Noise	5	6	10	11	12	4	7	2	2	2	5	6	72
Noise - Dogs Barking		1	1	1	1		1			1	1		7
Noise - Domestic	2		1	3	1	1			1	1		1	11
Rangers - Arson							1						1
Rangers - Noise (All)						1							1
Rangers - Vandalism										1			1
Road Hazard	3	3	2		5	2	4			2	6	1	28
Secondary Fire			2	1		5					1		9
Street Care - Dumped Rubbish		1		2	1	2	1					1	8
Street Care - Fly Tip	3	4	4	3	2	3			1	1	3	4	28
Threat	2	1	2	1	1			1	1	2			11
Town/Parish - Broken Glass	8	5	7	8	13	8	8			1	12		70
Town/Parish - Dangerous Driving				1									1
Town/Parish - Fly Tipping		1	2										3
Town/Parish - Harassment							1						1
Town/Parish - Heavy Littering		1	1		1			10	8	7	11	2	41
Town/Parish - Threat					1	1							2
Town/Parish - Vandalism	3	1	3	2		1	5			2	1	1	19
Untaxed Vehicles											1		1
Vandalism	1	2		2	3	1	1		1	1	1		13
Weapons / Explosives		1						5	1			1	8
<b>Grand Total</b>	<b>41</b>	<b>38</b>	<b>47</b>	<b>47</b>	<b>62</b>	<b>45</b>	<b>40</b>	<b>29</b>	<b>25</b>	<b>31</b>	<b>62</b>	<b>38</b>	<b>505</b>

Click [here](#) to go back to list of Neighbourhoods.

## Easthampstead & Wildridings:

Complaint Type	Apr-08	May-08	Jun-08	Jul-08	Aug-08	Sep-08	Oct-08	Nov-08	Dec-08	Jan-09	Feb-09	Mar-09	Grand Total
Abandoned Vehicle - Destruction	3							1					4
Arson / Fire				1		1		1					3
Assault		1	1	1	1	3		1		2			10
Dangerous Driving	7	6	10	6	10	4	6	4	3	13	7	9	85
Domestic Abuse					1								1
FDR1 Fire							2		1				3
Fight		2		2	1	6	2	3	2	3	3		24
Firearm	1			2	1			1	1				6
Fly Tipping	1		1	1		1		2	2			1	9
Graffiti/Fly Posting	2		1			1		1		3	1	1	10
Harassment	15	9	11	12	14	19	10	11	10	11	12	15	149
Indecency		1											1
Indecent Exposure			1				1		1				3
Neighbour Dispute	2		2	5	5	3	2	2	4	2	3	6	36
Noise	9	9	9	14	10	10	6	4	11	7	7	6	102
Noise - Dogs Barking	1	3	3	1	3		1	1		2	1	1	17
Noise - Domestic	2	7	11	11	7	9	2	4	3	6	2	6	70
Rangers - Broken Glass												1	1
Rangers - Dumped Rubbish/Fly Tipping						1							1
Rangers - Vandalism						1							1
Road Hazard	6	1	2	8	3	2	5	2	4	4	3	2	42
Secondary Fire	3			2			1		1			2	9
Street Care - Dumped Rubbish	7	10	12	4	4	4	8	2	1	4	7		63
Street Care - Fly Tip	5	8	4	10	9	5	9	8	4	5	4	11	82
Street Care - Hypodermic Syringes	2		2	1		1	1			1	1		9
Threat	1		5	3	2		1	2	1	3	2	4	24
Town/Parish - Fly Tipping							1				1		2
Town/Parish - Vandalism	2												2
Untaxed Vehicles	2	9	1	1	1	2	1	1	1	3	2		24
Vandalism		1	1	1	1	3	3	2	1	3	1		17
Weapons / Explosives			1		1			1		1		1	5
Grand Total	71	67	78	86	74	76	62	54	51	73	57	66	815

Click [here](#) to go back to list of Neighbourhoods.

## Great Hollands:

Complaint Type	Apr-08	May-08	Jun-08	Jul-08	Aug-08	Sep-08	Oct-08	Nov-08	Dec-08	Jan-09	Feb-09	Mar-09	Grand Total
Abandoned Vehicle - Destruction	1												1
Arson / Fire					1		2	1					4
Assault		2		3	3	1	1	1		1	2	1	15
Burnt Out Vehicle				1					1			1	3
Dangerous Driving	9	14	5	3	5	12	1		2	2	3	13	69
Drug related				1									1
FDR1 Fire				3		1			1		1	1	7
Fight	2	1		2	2	1	2		1	3	1	2	17
Firearm			1	1		1							3
Fly Tipping							1		1	1			3
Graffiti/Fly Posting	6	2	3	1			1	2	2	1		1	19
Harassment	5	7	6	6	9	4	7	4	9	6	7	8	78
Indecent Exposure	1			2									3
Neighbour Dispute	1		3	1		1		2		1	1	1	11
Noise	4	11	4	9	8	5	4	8	5	4	2	4	68
Noise - Dogs Barking					2		1	2	1				6
Noise - Domestic		8	10	5	4	4	2	3	5	1	1	6	49
Rangers - Arson							1						1
Road Hazard	4		2	2		1	5	2	2	4	4	2	28
Secondary Fire						1		2					3
Street Care - Dumped Rubbish	12	8	4	7	6	5	8	4	5	11	8	5	83
Street Care - Fly Tip	14	13	7	10	10	10	9	8	5	7	9	3	105
Street Care - Hypodermic Syringes			1	1				1				1	4
Threat	1		2	2			2	2	2	2	1	1	15
Town/Parish - Harassment							1						1
Town/Parish - Heavy Littering					1		1						2
Town/Parish - Smoke/Fire			1										1
Town/Parish - Vandalism	1	1	1	2			1			2	1		9
Untaxed Vehicles		6	2	1	2	3			1			1	16
Vandalism	2		1	2	3		1			2		1	12
Weapons / Explosives			1	1	1		1		1	1			6
Grand Total	63	73	54	66	57	50	52	42	44	47	42	53	643

Click [here](#) to go back to list of Neighbourhoods.

## Martins Heron, The Warren and Harmans Water:

Complaint Type	Apr-08	May-08	Jun-08	Jul-08	Aug-08	Sep-08	Oct-08	Nov-08	Dec-08	Jan-09	Feb-09	Mar-09	Grand Total
Abandoned Vehicle - Destruction	2		1										3
Arson / Fire						1	1						2
Assault	2	2	1	1	2			1	1	1	2		13
Burnt Out Vehicle												2	2
Dangerous Driving	5	3	9	7	5	6	5	3	4	6	4	1	58
Domestic Abuse								1					1
Drug related				1									1
FDR1 Fire		1	1	1									3
Fight	1	2	1	1				1	1	1			8
Firearm		1											1
Graffiti/Fly Posting			2	1	1		3	4	1	5			17
Harassment	3	3	8	7	2	3	7	5	4	6	2	3	53
Indecency	2												2
Indecent Exposure	1												1
Neighbour Dispute	1		1	3	3	1	3	8	6	2	1	1	30
Noise	5	8	3	6	9	2	4	13	6	1	4	7	68
Noise - Dogs Barking	1	6		2	1	1		3		2	1		17
Noise - Domestic	2	4		1	2	7	7	3	5	5	1	2	39
Rangers - Dumped Rubbish/Fly Tipping		2					1						3
Rangers - Vandalism		1			2					1			4
Road Hazard	1	7	5	4	2	3	4		2	4		1	33
Secondary Fire		2		2		1						1	6
Street Care - Dumped Rubbish	3	6	2	5	2	2	1	2		5		2	30
Street Care - Fly Tip	5	5	5	10	4	6	3	5	2	5	7	4	61
Street Care - Hypodermic Syringes		1	1		1	1	1						5
Threat	3		2	2	1	4			2	4			18
Town/Parish - Broken Glass	1	1		1	3	1							7
Town/Parish - Heavy Littering		1	1		1			1					4
Town/Parish - Vandalism					2	1							3
Untaxed Vehicles	1		1	1		2		1	2			1	9
Vandalism	2	1		1		2	1	1	2	3			13
Weapons / Explosives					1	1	1			1			4
<b>Grand Total</b>	<b>41</b>	<b>57</b>	<b>44</b>	<b>57</b>	<b>44</b>	<b>45</b>	<b>42</b>	<b>52</b>	<b>38</b>	<b>52</b>	<b>22</b>	<b>25</b>	<b>519</b>

Click [here](#) to go back to list of Neighbourhoods.

## Owlsmoor & College Town:

Complaint Type	Apr-08	May-08	Jun-08	Jul-08	Aug-08	Sep-08	Oct-08	Nov-08	Dec-08	Jan-09	Feb-09	Mar-09	Grand Total
Abandoned Vehicle - Refuse Disposal Act		1											1
Arson / Fire		1	1					1			1	4	8
Assault		2			2		2	1		1	2		10
Dangerous Driving	3	8	8	3	4	5	5	4	3	5	3	9	60
FDR1 Fire								1					1
Fight		1	5	1	1	1		1	1	3			14
Firearm	1		1	1			1		1		1		6
Fly Tipping		1				1							2
Graffiti/Fly Posting	4	1				1	2		4				12
Harassment	3	2	7	7	1	7	5	9	2	2	16	10	71
Indecent Exposure						1							1
Neighbour Dispute	3		2		1	1		2	2	2			13
Noise	4	5	9	8	12	6	4	1	1	5	2	11	68
Noise - Dogs Barking	2	1	2		2	2	2				1	1	13
Noise - Domestic	1	2	2	2	2	2	3	2		1	1	5	23
Rangers - Dangerous Driving		1					1						2
Rangers - Dumped Rubbish/Fly Tipping								1				1	2
Rangers - Vandalism			1	2									3
Road Hazard	5				2		3	3	1		4	2	20
Secondary Fire	1			2		1					2	3	9
Street Care - Dumped Rubbish	1	3	1	1	1	3	4	1			3	1	19
Street Care - Fly Tip	4	4	2	4	4		2	4	3	2	3	3	35
Threat	3	4			1	2	1	3				1	15
Town/Parish - Broken Glass											2	3	5
Town/Parish - Smoke/Fire											2	5	7
Town/Parish - Vandalism							2		1		1	2	6
Untaxed Vehicles			1	2	1	1				2		1	8
Vandalism		2	1	2	1	1			2	2	6	4	21
Weapons / Explosives			2	1		1		2					6
<b>Grand Total</b>	<b>35</b>	<b>39</b>	<b>45</b>	<b>36</b>	<b>35</b>	<b>36</b>	<b>37</b>	<b>36</b>	<b>21</b>	<b>25</b>	<b>50</b>	<b>66</b>	<b>461</b>

Click [here](#) to go back to list of Neighbourhoods.

## Priestwood & Garth:

Complaint Type	Apr-08	May-08	Jun-08	Jul-08	Aug-08	Sep-08	Oct-08	Nov-08	Dec-08	Jan-09	Feb-09	Mar-09	Grand Total
Abandoned Vehicle - Destruction										1			1
Arson / Fire							2					2	4
Assault	1		1		1		1	2		1		1	8
Dangerous Driving	14	12	9	6	1	8	4	2	7	2	8	7	80
Domestic Abuse						1							1
FDR1 Fire									1			1	2
Fight	1		1	1	3	1	2		2		1	1	13
Firearm	1			1	1	1							4
Fly Tipping	1						1						2
Graffiti/Fly Posting	2	2	2	1		2	1	4	1	1	2	2	20
Harassment	5	12	7	6	6	8	12	4	9	6	8	7	90
Indecency												1	1
Indecent Exposure					1								1
Neighbour Dispute		3	1	3	2	3	1	1	1	2	1	2	20
Noise	10	10		13	9	16	5	5	4	3	5	7	87
Noise - Dogs Barking	2	2	1	1	1	2	3			1	1		14
Noise - Domestic	7	6	6	4	8	3	1		2	3		2	42
Road Hazard	1	3	2	2	3	4	4	6	3	9	4	5	46
Secondary Fire	1	1	3			3	1	4				1	14
Street Care - Dumped Rubbish	2	4	4	7	2	5	3	4	6	3	2	4	46
Street Care - Fly Tip	4	7	5	7	5	3	4	5	2	5	6	4	57
Street Care - Hypodermic Syringes	1												1
Threat	1	3	1	1	1	3		2	1	1	3		17
Town/Parish - Smoke/Fire												1	1
Town/Parish - Vandalism	1		2				2	1				1	7
Untaxed Vehicles	1	1	1	2		1	6	1		1			14
Vandalism	3	1	1	1	2		1	2			3	1	15
Weapons / Explosives				3	2		2				2	2	11
Grand Total	59	67	47	59	48	64	56	43	39	39	46	52	619

Click [here](#) to go back to list of Neighbourhoods.

## Central Sandhurst and Little Sandhurst:

Complaint Type	Apr-08	May-08	Jun-08	Jul-08	Aug-08	Sep-08	Oct-08	Nov-08	Dec-08	Jan-09	Feb-09	Mar-09	Grand Total
Arson / Fire	3	2	1	1								2	9
Assault	3		1	3	1						1		9
Dangerous Driving	1	3	9	3	3	7	7	2	1	2	2	2	42
Domestic Abuse							1						1
FDR1 Fire						1			1				2
Fight	2		1		2	1							6
Fly Tipping					1				2			3	6
Graffiti/Fly Posting	1		1			2		2	1				7
Harassment	9	7	8	8	4	4	4	1	1	3	1	7	57
Neighbour Dispute	2	1	1	2	1			1		1			9
Noise	2	4	6	2	9	4	3	3	2		2	8	45
Noise - Dogs Barking	2		2	1	1	2	2	1	2	1	1		15
Noise - Domestic	2		3	5	1	6	1	2	1	2		3	26
Rangers - Arson	1	1											2
Rangers - Dangerous Driving					1	3							4
Rangers - Dumped Rubbish/Fly Tipping	1				1	1						1	4
Rangers - Vandalism						1	1	1		1			4
Road Hazard	1	3	4	2	2	2	1	2		1	3	2	23
Secondary Fire	2	2	2	1		1						4	12
Street Care - Dumped Rubbish				1		1		1		1		1	5
Street Care - Fly Tip	2	1	2	2	2	4		1	2	3		4	23
Threat	2		1		2	1	1			1			8
Town/Parish - Broken Glass	12		2	1	1	4	4	2	7	3	1	3	40
Town/Parish - Heavy Littering				1									1
Town/Parish - Smoke/Fire	5								1	2			8
Town/Parish - Vandalism	8		1	4	1	8	6		3	6			37
Untaxed Vehicles			1								1		2
Vandalism	2			2		6	1						11
Weapons / Explosives					1								1
<b>Grand Total</b>	<b>63</b>	<b>24</b>	<b>46</b>	<b>39</b>	<b>34</b>	<b>59</b>	<b>32</b>	<b>19</b>	<b>24</b>	<b>27</b>	<b>12</b>	<b>40</b>	<b>419</b>

Click [here](#) to go back to list of Neighbourhoods.

## Town Centre:

Complaint Type	Apr-08	May-08	Jun-08	Jul-08	Aug-08	Sep-08	Oct-08	Nov-08	Dec-08	Jan-09	Feb-09	Mar-09	Grand Total
Abandoned Vehicle - Destruction	1												1
Arson / Fire										1	1		2
Assault	2	1		3	2	1	3			2	4	1	19
Dangerous Driving	1	8	3	4	6	2	1	4	1	4	3	4	41
FDR1 Fire											1		1
Fight		1	3	4	3	2	5	1	4	4	2	1	30
Firearm	1				1				1		1		4
Graffiti/Fly Posting	4		1				2		1	2			10
Harassment	12	11	6	11	19	7	21	12	9	14	11	15	148
Indecency			1						1				2
Indecent Exposure						2	1					1	4
Neighbour Dispute	1		1					1					3
Noise	1	4			1	1	3	1	1	7	2	1	22
Noise - Domestic	2					1	1				1		5
Road Hazard	1				4	1		3	5		2	1	17
Street Care - Dumped Rubbish	1		2			1		1				1	6
Street Care - Fly Tip					4		2		1	2	1	1	11
Street Care - Hypodermic Syringes	1			1	1								3
Threat	4		1	1	1	4	3	3	2	3	2	1	25
Untaxed Vehicles						1	1			1			3
Vandalism	1	1	2	1		2	2	1	1		1		12
Weapons / Explosives	1		1						1		1	1	5
<b>Grand Total</b>	<b>34</b>	<b>26</b>	<b>21</b>	<b>25</b>	<b>42</b>	<b>27</b>	<b>43</b>	<b>28</b>	<b>29</b>	<b>38</b>	<b>33</b>	<b>28</b>	<b>374</b>

Click [here](#) to go back to list of Neighbourhoods.

## Warfield:

Complaint Type	Apr-08	May-08	Jun-08	Jul-08	Aug-08	Sep-08	Oct-08	Nov-08	Dec-08	Jan-09	Feb-09	Mar-09	Grand Total
Arson / Fire		1					1	1			1		4
Assault					1		1				2		4
Burnt Out Vehicle											1		1
Dangerous Driving	6	4	5	4	5	2	7	8	3	8	3	1	56
FDR1 Fire	1										1		2
Fight						2				1			3
Firearm					1								1
Fly Tipping			1										1
Graffiti/Fly Posting		1	1		1		2	4	1			2	12
Harassment	9	1	4	2	1	1	5	2	2	3	1		31
Neighbour Dispute		1			1	1		2		2			7
Noise	2	7	3	7	3	6	1		2		3	4	38
Noise - Dogs Barking		1	3	1		3			1		1	1	11
Noise - Domestic		3	2	3		3					1	1	13
Rangers - Arson					1								1
Rangers - Broken Glass												1	1
Rangers - Dangerous Driving			1		1								2
Rangers - Dumped Rubbish/Fly Tipping					1								1
Rangers - Harassment							1						1
Rangers - Vandalism			1		1		5						7
Road Hazard	1	1	2	2	3	2	1				7	5	24
Secondary Fire	1		1			1	1				1	1	6
Street Care - Dumped Rubbish	3	2	3	3		1			2	2	2	2	20
Street Care - Fly Tip	5	2	3	4	9	5	2	7	6	1	2	3	49
Street Care - Hypodermic Syringes	1												1
Threat	3		2	2		1		1		1			10
Town/Parish - Fly Tipping				1							1		2
Untaxed Vehicles			1		2			1			1		5
Vandalism	2	1	1		1			1					6
Weapons / Explosives										1			1
<b>Grand Total</b>	<b>34</b>	<b>25</b>	<b>34</b>	<b>29</b>	<b>32</b>	<b>28</b>	<b>27</b>	<b>27</b>	<b>17</b>	<b>19</b>	<b>28</b>	<b>21</b>	<b>321</b>

Click [here](#) to go back to list of Neighbourhoods.

## Winkfield, Cranbourne and North Ascot:

Complaint Type	Apr-08	May-08	Jun-08	Jul-08	Aug-08	Sep-08	Oct-08	Nov-08	Dec-08	Jan-09	Feb-09	Mar-09	Grand Total
Arson / Fire		1				1						1	3
Assault			1										1
Burnt Out Vehicle								1					1
Dangerous Driving	7	3	6	5	6	7	3	5	6	4	7	8	67
FDR1 Fire							1			2		1	4
Fight			1	1		1		2			1		6
Fly Tipping		1				1							2
Graffiti/Fly Posting			2		1	1	2						6
Harassment	2	4	2	2	3	2	3	1	2	1		5	27
Neighbour Dispute	1	3		1		2	3	2	1	1		1	15
Noise	1	5	4	5	6	6	8	2	3	1	2		43
Noise - Dogs Barking			3	4		2	1			1			11
Noise - Domestic	2	3		3	1	1	1	2					13
Rangers - Dangerous Driving	2				2							1	5
Rangers - Vandalism							1						1
Road Hazard	3	3	3	6	4	2	6		3	4	6	4	44
Secondary Fire	1	1									1	2	5
Street Care - Dumped Rubbish	2	2	3		1		2	2		2	1	1	16
Street Care - Fly Tip	2	4	3	1	5	3	2	2	1	3	2	2	30
Threat				1		2		1					4
Town/Parish - Broken Glass		1	1	1	1								4
Town/Parish - Drug Related									1				1
Town/Parish - Fly Tipping		1	1									1	3
Town/Parish - Heavy Littering		2	1	1					2				6
Town/Parish - Smoke/Fire		1											1
Town/Parish - Vandalism	1	1	2	3								1	8
Untaxed Vehicles						1					1	1	3
Vandalism	1			1					1				3
Weapons / Explosives						1				1			2
<b>Grand Total</b>	<b>25</b>	<b>36</b>	<b>33</b>	<b>35</b>	<b>30</b>	<b>33</b>	<b>33</b>	<b>20</b>	<b>20</b>	<b>20</b>	<b>21</b>	<b>29</b>	<b>335</b>

Click [here](#) to go back to list of Neighbourhoods.