

# Extended Services

*In and Around Schools and Children's Centres*

May 2010

Children, Young People & Learning

## *Extended services conference*

**'Truly widened my understanding and really useful to hear the experiences of others'**

This was typical of the feedback from delegates at the Extended Services conference held in March. 74 delegates gathered at Easthampstead Baptist Church to recognise recent successes and have some quality time to consider how their local area should move forward.



**'The reach of extended services is wider than I thought.'**

## **Wider context of extended services**

Through work in schools and the local community, extended services support a range of national and local priorities including:

- **Delivering Every Child Matters outcomes**
- **Addressing disadvantage**
- **The need to personalise services**
- **Community cohesion and equalities**
- **Supporting community empowerment**
- **Safeguarding**
- **Health and well-being**
- **'21st Century schools'**
- **Joined up working with families - 'Think Family'**
- **Parenting support**
- **Strengthening partnership working**
- **Engaging the community and voluntary sector**

## *Celebrating success*

Case studies illustrated current extended services work taking place.

Liz Norris, described the support Sandy Lane Primary School provides for the increasing number of children with English as an additional language (EAL). Special activities are provided for pupils and attention is paid to engagement with parents and developing home-school links.

Hilary Hyslop, a Police Community Support Officer told delegates about the young person's drop in that has been established at Birch Hill Community Centre on Friday evenings to engage young people in positive activities and reduce anti social behaviour.

Lynne Dick, Arts and Heritage Officer at the Council, described 'Age to Age' an inter-generational project where reminiscences of older people are gathered by primary aged children and then worked into songs, which are then sung to the people whose stories inspired them. This project has been run 4 times across the borough.

**'Very useful to hear about good practice and provide ideas for future work'**

## *Current extended services priorities*

There are six extended services clusters in the borough and all re-visit their local plan in April/May, confirming their local vision, checking if existing actions meet needs or new work areas are required. The conference gave the opportunity for some focused group work, that will be taken forward now in area-based meetings. As the clusters move to become Area Partnerships so there is a greater opportunity to work collaboratively to meet local priorities in a more joined up way.

More information on the work of Area Partnerships can be found overleaf.

**'Meeting key people heightened my awareness of what's on offer locally'**

# Extended Services Update

## Sandhurst Area Partnership

Sandhurst is working towards becoming a "Rights, Respect & Responsibility" town. A working group has been established and an action plan developed. In June a cluster school council meeting is planned to get children and young people's input on what a "Rights, Respect & Responsibility" town might look like and a schools competition is underway to design a new logo.

The Summer of Fun in Sandhurst will be back in 2010 with an impressive range of activities for children, young people and their families in Sandhurst.

## North Bracknell Area Partnership

Support was provided to the Northern Parishes Arts Week, working with the Council's Arts and Heritage team. This culminated in a lantern procession in Lily Hill Park when children and families paraded with their self-made lanterns.

Equipment and resources have been provided for a variety of out of school clubs for students at both Garth Hill College and Kennel Lane School. These include games, crafts, gardening, boys dance, saxophones, jewellery making and even a samba club

The Priestwood Methodist Church were supported to provide a very successful half term activity in February 2010.

## Birch Hill, Great Hollands & Hanworth Area Partnership

Area Partnership funding was allocated to St Margaret Clitherow, following consultation with pupils, to develop a netball club, lunchtime chess club and needlework/knitting club.

Easthampstead Park has developed an active retirement club in partnership with Age Concern to deliver Thai Chi and a healthy lifestyle programme to older people.

A 'Party in the Park' is being planned for the community in Jennett's Park along with summer activities for young people.

## Family Support Advisers

All primary schools and most secondary schools in Bracknell Forest now employ a Family Support Adviser working with parents and children. The implementation of the Family Support Adviser role has been extremely successful.

'The school makes a good contribution to community cohesion. The school-based Family Support Adviser has a very positive impact on the way the school works with the community.'

Warfield C of E Primary School Ofsted Report January 2009

## South Bracknell Area Partnership

The South Bracknell Area Partnership will be first in the borough to undertake accreditation under the Quality Development Framework. This offers a structure to the cluster work and shows the true strength and value that this partnership sees in working together.

The partnership has pooled funds to employ an Extended Services Assistant to develop joint working.

A very exciting 2010-2011 with lots of new initiatives and joint working is expected.

## Crowthorne Area Partnership

The Hope Zone Drop In for young people aged 11 and over is open on Wednesdays at Crowthorne Baptist Church. The drop in is proving very popular and the churches in Crowthorne are looking for a permanent site for the facility.

The Extended Services Coordinator is working in partnership with the Police Community Support Officer to provide a summer programme of activities for young people on the Morgan Recreation Ground.

## Winkfield, Cranbourne and North Ascot Area Partnership

First Aid sessions for parents were funded in all the area schools and proved very popular. Further sessions are planned in the future.

The school councils have held joint meetings looking at a cluster tree planting project funded through the area budget. The trees will be planted in the autumn.

Ascot Heath Juniors had great fun and learnt to work as a team in their tug of war sessions. This term Cranbourne gets involved.

Meanwhile fingers are turning green at Winkfield St Mary's with their new gardening club.

## Parenting Support

The spring term saw 4 workshops for parents running across the borough with a further 8 workshops running this term and 4 in the autumn term. In addition there has been a series of seminars from the National Autistic Society around children with autism and their siblings.

The Parenting Support Directory, which outlines the support available at all levels of need, has improved practitioners knowledge of the range of support available.

A new parenting programme, Strengthening Families, was introduced in the spring term. It works with both parents and their children.

## Welcome

We welcome Christine Boucher to the Extended Services team. Christine started her role as Extended Services Accreditations Coordinator at the end of February this year taking over from Penny Knight. Her role is to offer support and guidance to schools and clusters of schools aiming for external accreditation for their extended services provision. Offered through Canterbury Christ Church University, schools can work towards three different levels of accreditation – Emerged, Established and Advanced in QISS (Quality in Study Support) or QES (Quality in Extended Services).

There are currently seven Bracknell Forest schools/organisations with accreditation and Christine is looking to increase the number this year. Christine can be reached on 01344 459094 or [christine.boucher@bracknell-forest.gov.uk](mailto:christine.boucher@bracknell-forest.gov.uk)

## Bracknell Forest Activities Bursary update

A pilot ran from the summer of 2009 in seven schools across the borough. This provided invaluable experience which helped in April 2010 when the project rolled out to all schools in Bracknell Forest.

This funding offers targeted support to children from economically disadvantaged families to access the types of leisure opportunities enjoyed by children from better off homes. Known locally as the Activity Bursary, this support can benefit children and young people in offering positive opportunities which ordinarily they would not get the chance to access.

Schools have agreed a set of criteria for children to be eligible to access the bursary. The criteria can be checked directly with your school or FSA.

Already the fund has been a huge success with some fantastic stories of how this has allowed children to be “the same” as their peers.

“I couldn’t believe it when we were offered free swimming lessons. As I am on benefits out of school activities were out of my reach, but this is just fantastic. My son thoroughly enjoyed swimming and can’t wait to start golf!”

Parent of Alfie - BFAB child

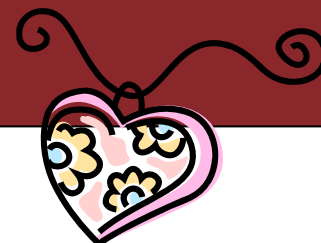
All borough schools have now been invited to send in the names of their eligible children and there is a huge increase in requests for courses and activities. Karen Seaby has recently joined the Extended Services team as our dedicated Activity Bursary Assistant to deal with the demand. You can reach Karen on 01344 354094

[karen.seaby@bracknell-forest.gov.uk](mailto:karen.seaby@bracknell-forest.gov.uk)

“The bursary gave me the amazing opportunity to take part in an activity at South Hill Park. I decided to take part in the jewellery and metalwork course. I feel this has benefitted me because I have gained a lot of knowledge about metals. I have also achieved the bronze arts award by making a silver ring, anodising aluminium and cuttlefish casting. I enjoyed this activity so much that I made my Mum a pendant too!

The course is great fun and I am currently working towards the silver arts award. So far I have made a silver ring with a setting. The course is amazing and I wouldn’t be part of it if it wasn’t for the bursary. THANK YOU SO MUCH BURSARY.”

Hayley, 13 years old



## Peter Pan pantomime

“To be able to go and watch something like this was so good. I can’t afford to do a lot with the kids so it was nice to do this. It is nice that someone has thought about us people that can’t afford things like this. It would be nice if more people could help out.

Thank you.

Katherine – Parent of BFAB child



For further information on extended services in and around schools contact:

**Graham Symonds**

**Extended Services Manager**

**01344 354067 [graham.symonds@bracknell-forest.gov.uk](mailto:graham.symonds@bracknell-forest.gov.uk)**