



34



Innovating, creating...



Key Statistics from the 2001 Census

Summary Report *Section 1 – Change over Time & Trends*

January 2004

Key Statistics from the 2001 Census: Summary Report
Change Over Time and Trends

Document Information

Document Name:	Census 2001 - Written Report - Section 1			
Document Location:	::ODMA\GRPWISE\BFBC_Intra.Intra.Chief Exec Policy:596.1			
Document Owner:	Performance and Improvement Chief Executive's Office Bracknell Forest Borough Council Easthampstead House Town Square Bracknell Berkshire RG12 1AQ Tel.: 01344 423060 Email: performance.improvement@bracknell-forest.gov.uk			
Availability:	Hard copy, Electronic Copy			
Last Save Date:	22/12/03 5:22			
Review Date:	Not applicable			
Classification:	Internal, External			
History:	Version	Detail of Amendment	Date	Authors
	1.0	Document created	Oct 203	Robin Taylor
	4.1	Formatting and links checked for on line publications	16/12/03	Kieth Naylor
	4.2	Proof read and published online	22/12/03	Performance and Improvement Team

Section One : Change Over Time and Trends

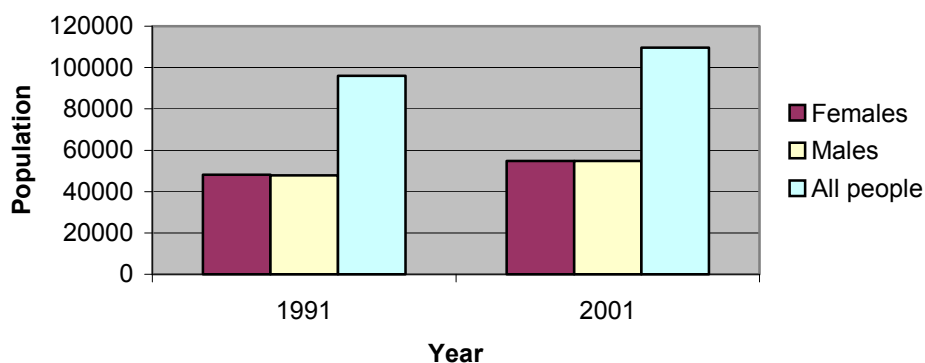
The information within this section is a written and graphical summary of the key points from the detailed data contained within Chapter 1 of the Technical Appendix.

1	Population	2
2	Housing	4
3	Transport and Travel	5
4	Economy and Society	6
5	Key Facts and Figures	8

1 Population

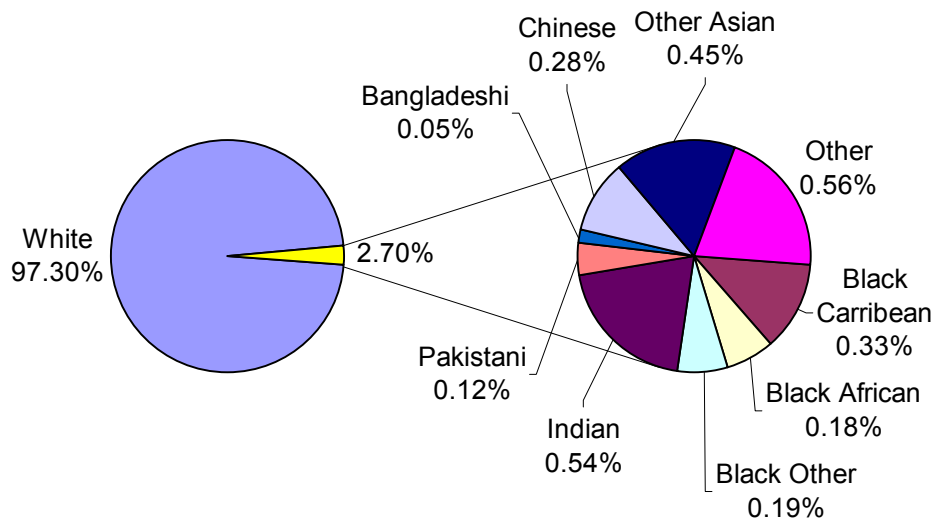
- 1.1 Between 1991 and 2001, the population of Bracknell Forest rose by 13,668 (14.25%) from 95,949 to 109,617. The female population grew by 13.79%, the male population by 14.70%.

Population of Bracknell Forest - Change between 1991 and 2001

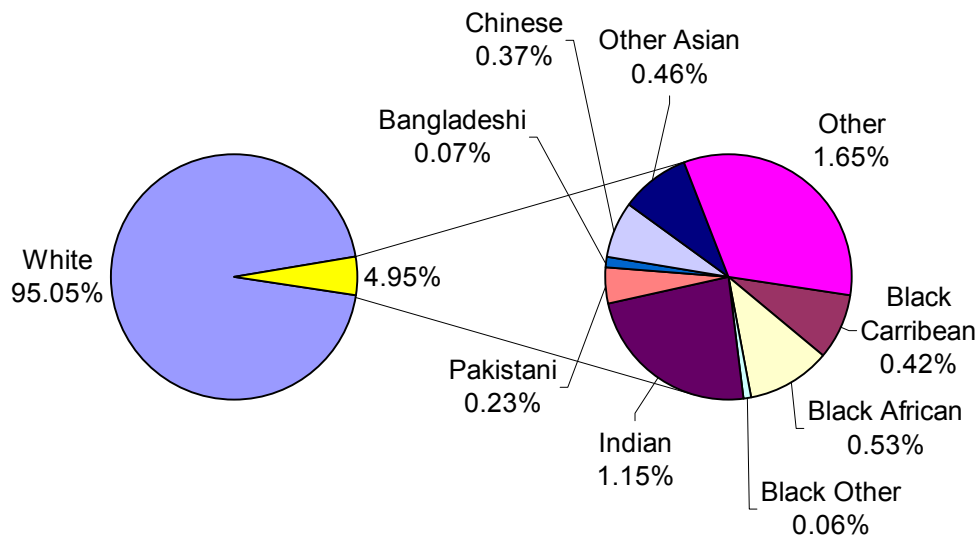


- 1.2 Between 1991 and 2001, the proportion of people aged 45 - 64 rose from 19.19% to 21.73% of Borough population. The proportion of people aged 15 – 24, on the other hand, fell from 14.09% to 11.95%. The proportions of people aged 0-14, 25-44 and 65 and over all fell by less than 1%.
- 1.3 The number of households with children rose by 2,119 between the two census counts. However, as a proportion of the total number of households within the Borough, this represents a decrease of 6.98%.
- 1.4 Between 1991 and 2001, the proportion of Bracknell Forest residents categorised as 'white' fell from 97.30% to 95.05%. The proportional representation of other ethnic groups all rose with the exception of 'black other' (please see notes in technical appendix). However, with the exception of those classified as 'Indian' (1.15%) and 'Other' (1.65%), each of these ethnic groups continued to represent less than 1% of the Borough's population.

Ethnic Population of Bracknell Forest - 1991



Ethnic Population of Bracknell Forest - 2001



- 1.5 In 1991 4.79% of all households in Bracknell Forest contained lone parents with dependent children. In 2001, this figure had risen by 13.93% to 5.46%.
- 1.6 Between 1991 and 2001, the number of retired households rose by 1,093 from 6,362 to 7,455. However, as a proportion of the total number of households, this represents a fall of 3.59% from 17.82% to 17.18%.
- 1.7 Between 1991 and 2001, the proportion of single residents within Bracknell Forest rose from 26.48% to 29.92%. The proportion of married individuals rose fell from

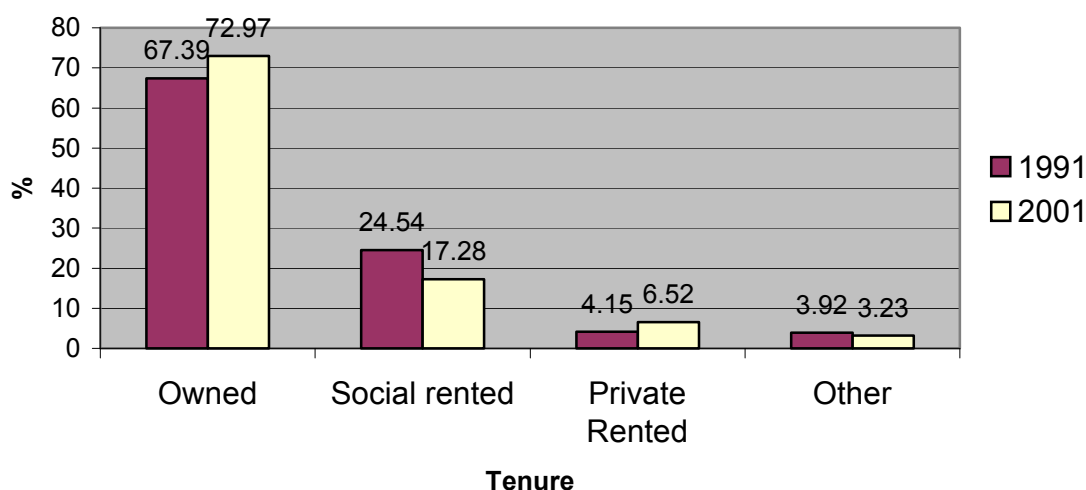
60.56% to 55.75%. The proportion of divorced individuals rose from 6.58% to 8.48%. The proportion of widowed individuals fell from 6.38% to 5.85%.

2 Housing

2.1 Between 1991 and 2001 the number of households within Bracknell Forest rose by 7,692 (21.55%) from 35,700 to 43,392.

2.2 In 1991, 67.39% of all households within the Borough were owned by the occupier. In 2001, this proportion was 8.28% higher at 72.97%. The proportion of households which were 'socially rented' fell by 29.57% from 24.54% to 17.28%. The number which were privately rented rose by 57.21% from 4.15% to 6.52%.

Housing Tenure in Bracknell Forest - Change Between 1991 and 2001



2.3 Between 1991 and 2001, the proportion of all households within Bracknell Forest which were detached rose by 14.07% from 25.30% to 28.86%. The proportion of semi-detached houses rose by 10.92% from 18.12% to 20.10%. The proportion of flats, maisonettes and apartments rose by 6.22% from 15.46% to 16.42%. The proportion of terraced houses, on the other hand, fell by 16.08% from 39.07% to 32.78%. The proportion of caravans and other mobile/temporary structures also fell by 10.62% from 2.06% to 1.84%. In terms of numbers, rather than proportion, every category increased.

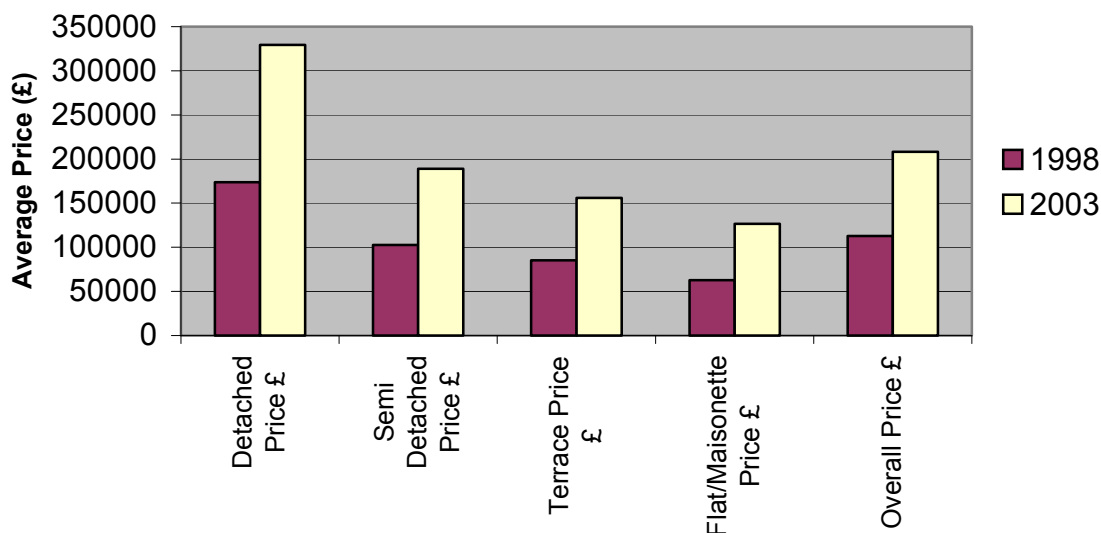
2.4 In 1991 the average household contained 2.59 people. By 2001 this figure was 2.46. This represents a decrease of approximately 0.13 people (4.90%).

2.5 Between 1991 and 2001, the average number of rooms per household within the Borough rose from 5.27 to 5.61. This represents an increase of 0.34 rooms (6.54%).

2.6 Between 1991 and 2001, the proportion of households within the Borough without central heating fell by 51.79% from 4.99% to 2.02%. The proportion of households without the sole use of a bath/shower and toilet, however, rose by 25.84% from 0.22% to 0.28%.

- 2.7 Between the 2nd quarter of 1998 and the first quarter of 2003, the average price of a property within Bracknell Forest rose from £112,716 to £208,060 (an increase of 84.59%). This increase is higher than that for England and Wales (72.86%) but lower than that for the South East (86.13%) and Berkshire (86.51%). It is lower than the increase across all the other unitary authorities within Berkshire with the exception of Windsor and Maidenhead (76.38%) and Wokingham (73.38%).

House Prices within Bracknell Forest - Change Between 1998 and 2003



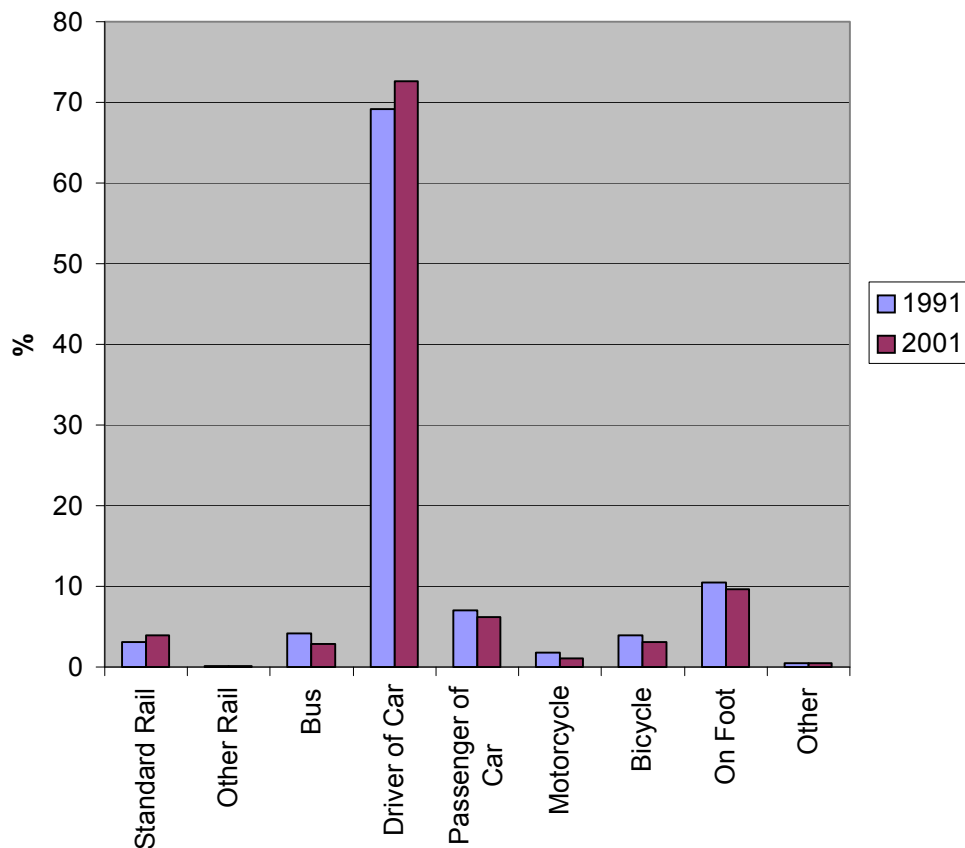
- 2.8 The average price of detached, semi-detached and terraced properties within the Borough rose by 80 to 90% between 1998 and 2003. The average price of flats and maisonettes has risen by over 100%.

3 Transport and Travel

- 3.1 Between 1991 and 2001 the number of cars/vans within Bracknell Forest rose by 15,834 (34.24%). The average number of cars per household rose from 1.27 to 1.43. This represents an increase of 0.16 cars/vans per household (12.62%).
- 3.2 The proportion of households within the Borough with 0 cars/vans fell by 21.75% between 1991 and 2001 from 18.58% to 14.53%. The proportion of 1 car/van households also fell – by 5.41% from 42.63% to 40.32%. The number of households with 2 cars/van rose by 11.96% from 31.96% to 35.79%. The proportion of households with 3 or more cars/vans rose by 36.98% from 6.83% to 9.35%.
- 3.3 In 1991, 1,980 Bracknell Forest residents worked from home. By 2001, this figure had risen by 3,451 to 5,431. As a proportion of the total population, this represents an increase of 120.81% from 4.10% to 9.05%.
- 3.4 Between 1991 and 2001, the proportion of people who drove to work rose from 5.02% to 7.26%. The proportion of people using the train to get to work increased from 3.07% to 3.93%. However, the number of people using the bus

to travel to work decreased by 31.10% from 4.18% to 2.88%. The proportion of people travelling by bicycle decreased by 20.56% from 3.88% to 3.08%. The proportion of people travelling on foot decreased by 7.62% from 10.44% to 9.65%.

**How residents of Bracknell Forest Travel to Work -
Change between 1991 and 2001**

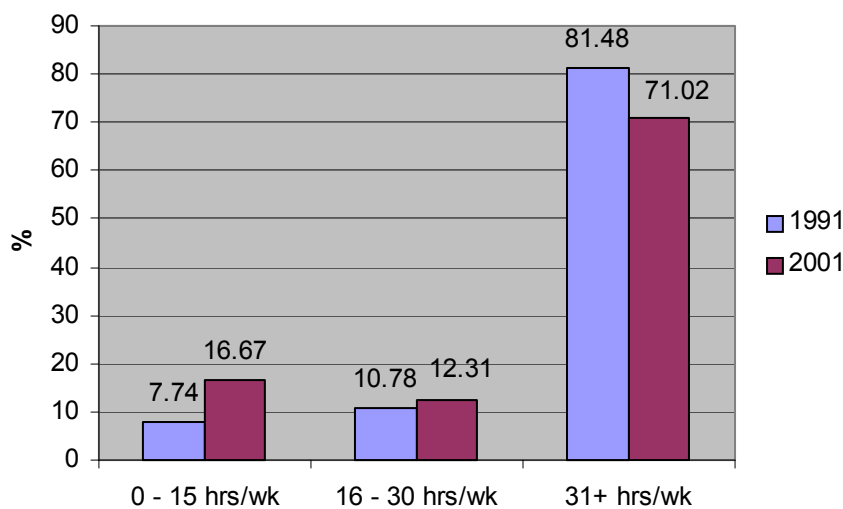


4 Economy and Society

- 4.1 Between 1991 and 2001, the number of Bracknell Forest residents who were economically active increased by 9,651. As a proportion of the population, this represents an increase of 9.55% from 70.66% to 77.41%. The proportion of females who were economically active increased by 18.2% from 59.48% to 70.36%. The proportion of males who were economically active increased by 2.48% from 82.28% to 84.32%.
- 4.2 Between 1991 and 2001, the proportion of the Borough's economically active population who were employed fell by 0.64% from 83.67% to 83.13%. The proportion who were self-employed increased by 15.31% from 9.50 to 10.96%. The proportion who were unemployed fell by 55.73% from 5.89% to 2.69%.
- 4.3 Between 1991 and 2001, the proportion of Bracknell Forest's economically inactive population who were students increased by 1.03% from 12.34% to 12.47%. The proportion who were permanently sick/disabled increased by 32.91% from 8.63% to 11.48%. The proportion who were retired fell by 9.29% from 44.71% to 40.55%.

4.4 In 1991, 7.74% of the employed population of the Borough worked 0 – 15 hours per week. In 2001, this was 115.28% higher at 16.67%. The proportion of people working 16 - 30 hours per week rose by 14.19% from 10.78% to 12.31%. As a proportion of the population there were 12.84% fewer people working 31 hours per week or more than previously (81.48% in 1991 and 71.02% in 2001). However, in numerical terms there were 8,758 more people working this amount of time, the highest increase of all three categories.

**Hours Worked by Those in Employment
within Bracknell Forest - Change between
1991 and 2001**



4.5 In 2001, the proportion of the workforce employed within a professional occupation increased by 27.10% from 9.96% to 12.65%. The proportion working within 'associate professional' occupations rose by 55.04% from 9.58% to 14.86%. The proportion of the workforce employed within all other occupations fell. However, with the exception of 'skilled' tradespeople, 'personal service' employees and 'plant and machine operatives', which fell by 87, 490 and 137 people respectively, the number of people all experienced an increase in numerical terms. The smallest proportional decrease was in managers (2.51%) whilst the largest was within 'personal service' employees (28.46%).

5 Key Facts and Figures

Bracknell Forest (1991 – 2001)	England & Wales (1991 – 2001)	Further Information
A total population increase of 13,688 (14.3%).	A total population increase of 52,041,916 (4.3%).	Sub-section 1: Population
The proportion of the population aged 45 – 64 rose from 19.2% to 21.7% The proportion of the population aged 15 – 24 fell from 14.1% to 12.0%.	The proportion of the population aged 45 – 64 rose from 21.9% to 23.8% The proportion of the population aged 15 – 24 fell from 13.9% to 12.2%.	Sub-section 1: Population
The proportion of the population who were classified as belonging to ethnic groups other than 'white' rose from 2.7% to 5.0%.	The proportion of the population who were classified as belonging to ethnic groups other than 'white' rose from 7.4% to 9.1%.	Sub-section 1: Population
The proportion of single people rose from 26.48% to 29.92%. The proportion of married people fell from 60.56% to 55.75%.	The proportion of single people rose from 26.3% to 30.1%. The proportion of married people fell from 58.4% to 53.3%.	Sub-section 1: Population
An overall increase of 7,692 (21.6%) households.	An overall increase of 1,783,203 (9.0%) households.	Sub-section 2: Housing
A rise in household ownership from 67.4% to 73.0%. A fall in 'socially rented' households from 24.54% to 17.28%.	A rise in household ownership from 67.8% to 68.9%. A fall in 'socially rented' households from 22.9% to 19.2%.	Sub-section 2: Housing
The proportion of households without central heating fell from 5.0% to 2.0%.	The proportion of households without central heating fell from 17.7% to 8.5%.	Sub-section 2: Housing
The average price of a property rose by 84.6% from £112,716 to £208,060 (1998 – 2003).	The average price of a property rose by 72.8% from £84,391 to £145,819 (1998 – 2003).	Sub-section 2: Housing
The number of cars/vans rose by 15,834 (34.2%).	The number of cars/vans rose by 4,935,788 (26.0%)	Sub-section 3: Transport and Travel
The proportion of employed residents working from home rose from 4.1% to 9.1%.	The proportion of employed residents working from home rose from 4.9% to 9.2%.	Sub-section 3: Transport and Travel
The proportion of residents who drove to work increased from 69.2% to 72.7%.	The proportion of residents who drove to work increased from 57.7% to 61.1%.	Sub-section 3: Transport and Travel
The proportion of residents who are 'economically active' rose by 9,651 from 70.7% to 77.4%.	The proportion of residents who are 'economically active' rose by 1,126,294 from 61.0% to 66.5%.	Sub-section 4: Economy and Society
The proportion of residents working within a professional occupation rose from 10.0% to 12.7%, The proportion of those with 'associate technical' professions rose from 9.58% to 14.86%. The proportion of residents working in all other types of occupation fell.	The proportion of residents working within a professional occupation rose from 8.7% to 11.2%, The proportion of those with 'associate technical' professions rose from 8.7% to 13.8%. The proportion of residents working in all other types of occupation fell with the exception of sales staff which increased from 7.1% to 7.7%.	Sub-section 4: Economy and Society

Key Statistics from the 2001 Census: Summary Report
Change Over Time and Trends