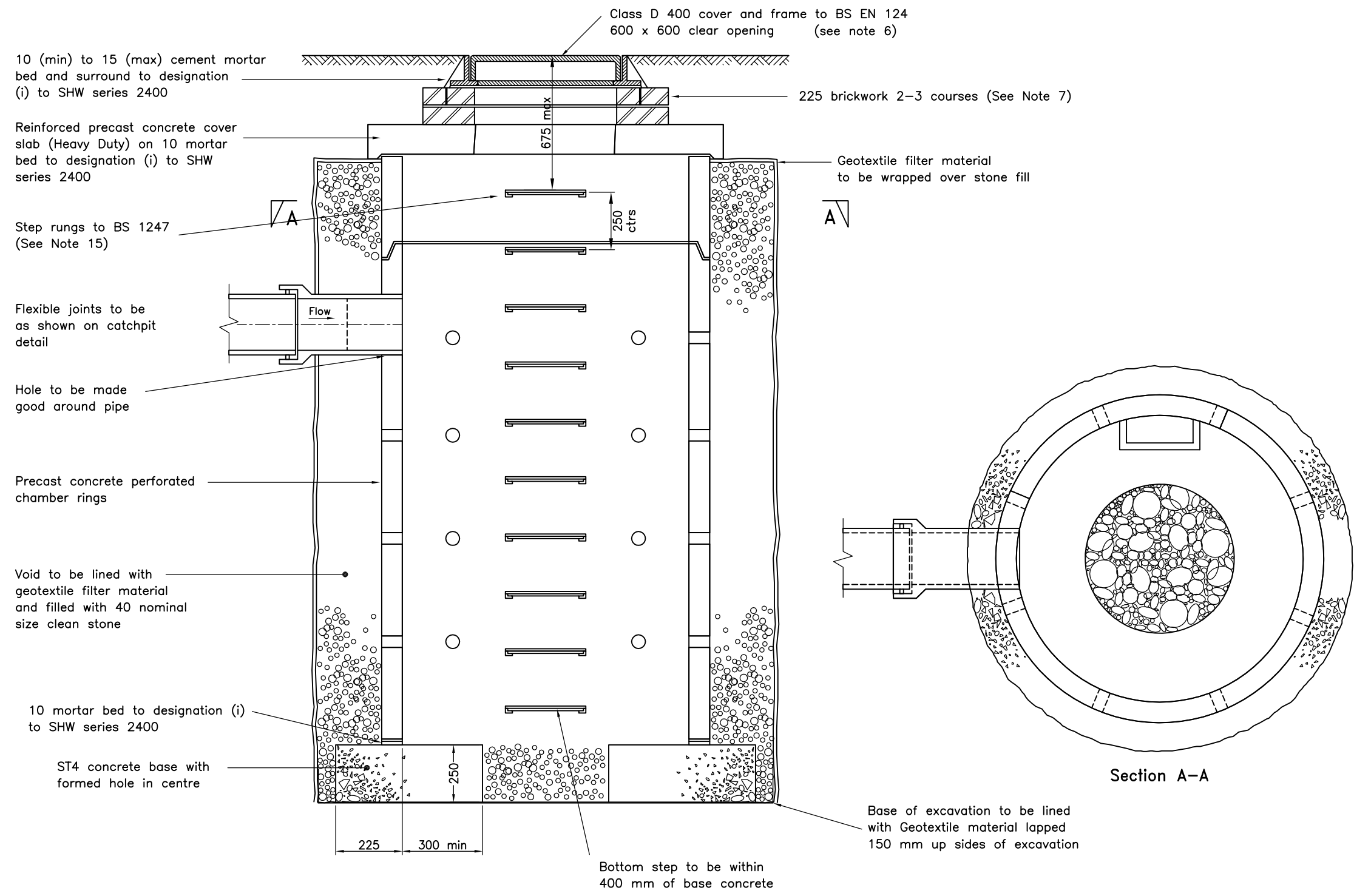


Drawing Number
SD/500/8A

- Notes
- All dimensions are in millimetres.
 - Chamber size to be the largest possible in the area available.
 - Storage capacity to be based on 100% run-off from surrounding impermeable area.
 - Soakage tests in accordance with BRE Digest 365 are required prior to construction. Soakage rate for the trial to be three times the design rate.
 - No part of the soakaway may fall beneath the carriageway or footway.
 - Cover and frame to be Class D400 Badgemarked, HD, and Kitemarked and have a protective coating complying with BS EN 124: 1994. In areas of block paving an 'infill' type cover may be required.
 - Bricks to be Engineering Class B laid in English bond in mortar to designation (i) to SHW series 2400.
 - Precast concrete chambers shall comply with BS 5911 Part 200.
 - Perforations to be 40 dia at 450 centres.
 - Top ring may be unperforated.
 - Finish to internal concrete to be F1 on formed surfaces and U2 on unformed surfaces.
 - Ends of pipes shall be neatly built into chamber and finished flush with Class 1 mortar.
 - The nearest joints to chamber shall not be restricted by concrete.
 - Petrol interceptors may be required where soakaways are used.
 - Chambers more than 3m deep must be provided with galvanised ladders.
 - Surface level tolerance +0 -6 in paved areas. +15 -15 in verges.



Do not scale this drawing

A	Mar 11	Various minor amendments	KPT
Rev	Date		Checked



Project
STANDARD DRAWINGS

Title
**SOAKAWAY
PRECAST CONCRETE CONSTRUCTION**

Drawing No.
SD/500/8A

Scale **NOT TO SCALE** Date **MAY 04**

**Department of Environment,
Culture & Communities**