

THE RECYCLED GARDEN

BIG DAY OUT
SOUTH HILL PARK
27th JUNE 2009

The recycled garden is a show garden built using reclaimed and recycled materials in its construction. The initial design scheme has been modified to make the most of the materials and plants available, and to include a number of features. We hope that visitors will be able to take away ideas and inspiration for their own gardens.

Imagine the front edge of the garden is the back of the house, and you enter the garden from patio doors onto a paved and decked terrace. Reclaimed bricks and reclaimed timber from a dismantled boardwalk provide an area for relaxation and outdoor meals.

To the left, a small lawn area is surrounded by flowering plants, and backed by a low wall of gabions infilled with a range of reclaimed materials, from old clay roof tiles to granite setts, bottles to old bricks.

The gabion wall meets a log wall of logs and branches, supporting a raised bed behind. This feature also provides a valuable wildlife habitat. The area behind the log wall is planted with native plants and includes various nest boxes, bat boxes, hedgehog and toad houses.

For more information on creating a wildlife garden at home please see Bracknell Forest Council's leaflet "Discover Gardening for Wildlife".

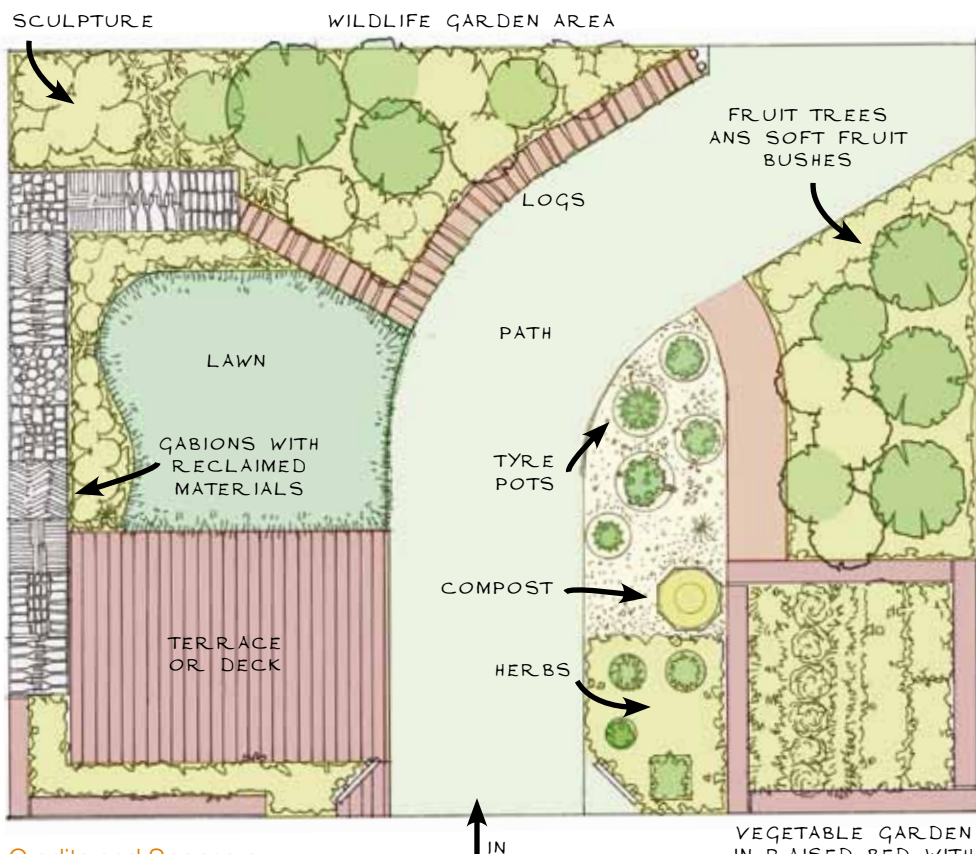
The right-hand side of the garden includes a raised vegetable garden supported by railway sleepers. Vegetables and herbs are growing in reclaimed pots and stacks of old car tyres. Raised beds are ideal for building up an area of good topsoil with lots of organic material, known as deep bed cultivation. Stacks of tyres can be used to grow root crops such as potatoes, soft fruit, and for forcing crops like Celery and Rhubarb.

A compost bin provides a means of recycling green waste from the garden and vegetable peelings from the kitchen and turning this into a valuable soil improving organic compost.

Dwarf fruit trees are planted to demonstrate how these could fit into a small garden, or even be planted in a large tub on a terrace.

A central path allows visitors to walk through the middle of the garden, getting a close up view of the different areas before leaving the garden to visit the next door stand to find out more information on composting and waste minimisation.





Credits and Sponsors:

- Binfield House Nursery, Bracknell Forest Council – help with building the garden, growing on plants, fruit trees, practical know-how
- Shorts Reclamation, Chobham, Surrey – reclaimed tiles, bricks, granite setts, chimney pots, slates and plywood
- Shorts, Planners Farm, Warfield - Compost
- Syngenta – summer flowering perennials
- Green machine – help with building the garden and renovating pots, etc
- Technical Surfaces, Gabions for the low wire mesh wire wall
- SITA - help with transporting materials
- Re3 - helping collect garden materials from Smallmead and Longshot Lane Household Waste and Recycling Centres

