

**Ambarrow Hill and Court  
SANG Maintenance Plan**

**for**

**Thames Basin Heaths  
Special Protection Area (SPA) Mitigation Works**

**CONTENTS**

- 1. Introduction**
- 2. Completed SANG Enhancement Works**
- 3. Monitoring**
- 4. Site Plan**
- 5. Monitoring/maintenance Programme**
- 6. SANGs Assessment Criteria**
- 7. Final Spend on SANG Enhancement Works**
- 8. Glossary**
- 9. References**

## **1 Introduction**

This document compliments the approved Ambarrow Hill/Court Open Space Management Plan (OSMP) following the on-site completion of pre-approved site enhancements.

Ambarrow Hill/Court SANG has been receiving incremental enhancement features since NE approval of the OSMP in November 2009 and subsequent 2012/15 revisions. Following these enhancements the site/s are seen to effectively operate as a SANG and this document looks to describe the ongoing 'maintenance phase', allowing the site/s to continue to attract users away from the TBH SPA for the in perpetuity period (min. 125 years).

The SANGs assessment checklist in section 6 has been used to demonstrate how Ambarrow Hill and Court are suitable as an alternative to the SPA and how enhancements have enabled their use as such. As Ambarrow Court is designated as a Local Nature Reserve (LNR) special attention has been given to ensuring that the provision for increased visitor use includes opportunities to enhance the ecological value of the site.

### **1.1.1 Description**

This SANG comprises Ambarrow Court owned by Bracknell Forest Council and managed by the Parks & Countryside Service and Ambarrow Hill which is owned and managed by the National Trust. These are immediately adjacent to each other and have no formal boundary allowing free public access between the two green spaces.

### **1.1.1 Location**

Ambarrow Hill and Ambarrow Court are located in the south west of Bracknell Forest Borough, within the parish of Sandhurst to the west of Sandhurst town.

OS grid reference: SU 824 628.

Area: 13.73 hectares

### **1.1.2 Access**

Visitors access both of the sites via a car park off Wokingham Road (A321). There is some informal parking along Ambarrow Corner. Pedestrian accesses are also located at the car park, from the north at Ambarrow Corner, from the south off Wokingham Road, next to Maybrick Close. Public Right of Way (Sandhurst FP9) through the site has been diverted to now include the improved bridge crossing to the north linking the site via Public Right of Way (Sandhurst 9 and Crowthorne 1), following closure of the pedestrian level crossing by Network Rail. Ambarrow Court provides an accessible route which enables disabled users (including wheelchairs) to make a circular route around the site.

### **1.1.3 Land ownership**

Ambarrow Court (8.76 ha) is owned by Bracknell Forest Council and Ambarrow Hill (4.97 ha) is owned by the National Trust. In December 2009 the National Trust confirmed that Ambarrow Hill could be managed as part of the SANG.

### **1.1.4 Designations**

Ambarrow Court is designated a Local Nature Reserve (LNR) and Wildlife Heritage Site (WHS) to reflect its value to biodiversity and local people.

## **1.2 Funding**

Funding for the enhancements works is from new residential development within the borough which is likely to have an adverse effect on the SPA, as set out in the Thames Basin Heaths Special Protection Area Supplementary Planning Document (TBH SPA SPD 2018). This states that legal obligations under Section 106 of the Town and Country Planning Act will be entered into before a planning application is determined. A proportion of the total amount payable under this agreement goes towards SANG enhancement and in perpetuity maintenance measures as detailed in this SANG plan. Now the site has been enhanced the maintenance measures will ensure the site continues to act as an alternative to the SPA and will attract new residents away from the SPA.

## **1.3 Prioritising Works**

Implementation of the enhancement works was prioritised in the following order (unless deemed inappropriate due to other site works going on at that time or seasonal restrictions):

1. Site entrance and visual works
2. Path and access improvements
3. Information and interpretation provision
4. Other works (including habitat management)

## **1.4 Maintenance**

Over time there becomes an increased need to repair and maintain the older enhancements on site as well as potential for unexpected damage or breakages. As such there is a requirement to utilise developer contributions to maintain the sites to SANG standards.

Maintenance contributions are to be made available to ensure the SANG is maintained and managed to comply with the Habitats Regulations and the Development Plan. Maintenance contributions do not comprise infrastructure but will be for matters such as repairs, planting, SANG wardens and staff. The amount received is pooled with all other similar contributions and invested to ensure that the maintenance budget lasts for the in perpetuity period, defined as 125 years in the SPA SPD.

The SPA contribution which is allocated for in perpetuity maintenance will be applied as necessary in order to maintain the standard of the site and keep it functioning as a SANG. It will be necessary to adjust annual expenditure of the in-perpetuity maintenance fund to respond to the needs of the site at a particular time. Expenditure may therefore be higher in some years than others.

## **1.5 Conclusion**

The completed site features were identified by using the SANGs assessment checklist (see section 6) as being necessary to attract existing users from the SPA and encourage new residents to visit the enhanced area of open space in preference to the SPA. These works are in addition to existing management objectives and general upgrading of the site/s.

The works have enhanced Ambarrow Hill and Court promoting them as a single open space that provides a range of conditions for visitors of all abilities. The sites will continue to be promoted to local residents and new residents through targeted publicity as an attractive alternative to the Thames Basin Heaths SPA.

Alongside the completed capital programme, day to day management and maintenance is needed to sustain these improvements and ensure that any increased use of the sites continues to be attractive to visitors.

As a component of a wider package of measures the works detailed within this plan will avoid the adverse impacts of recreation arising from new residential development on the SPA and enable sustainable development within the Borough.

## 2 Completed SANG Enhancement Works

The completed site enhancement measures as agreed in the OSMP and identified by using the Suitable Alternative Natural Green Space (SANG) assessment checklist (section 6). The following sets out criteria, both essential and desirable and how enhancements are achieving the primary aim of providing alternative green space to divert visitors from using the SPA. The intention of these SANGs is to avoid and mitigate the impacts of recreation arising from new residential development, by preventing an increase in visitor pressure on the SPA.

The completed enhancement works are in addition to existing management objectives and general upgrading of the sites. The enhancements to these alternative areas of open space aim to replicate features which have been found to draw visitors to the SPA and improve access alongside enhancement of the sites' natural qualities.

Completed site works as described, are followed by a series of photos highlighting the new enhancement features installed on site. A breakdown of enhancement spend is found on the costing table (section 7).

### 2.1 Information and Interpretation

- **Small site signs** installed at key pedestrian entrances to identify the sites.
- **New site noticeboard and interpretive panel** Provided at the main site entrance including a new combined site map of the two sites with a range of routes marked.
- **Fingerposts and waymarkers** linking the two sites and providing a clearly marked route within the more informal areas of Ambarrow Hill and Court, taking into account the potential for underground archaeological features. Fingerposts link the SANG with adjacent areas and long-distance walks such as the Ramblers Route and Three Castles Path.
- **SANGs leaflet to promote all sites in the borough and a Site leaflet** to promote use of Ambarrow Hill and Court together and raise awareness of their suitability for visitors including those with dogs. Leaflets highlight disabled access, biodiversity and archaeological aspects of the sites. Distribution through libraries, the Look Out Discovery Centre and on websites to ensure a wide audience whilst marketing through estate agents will target new residents.

Ambarrow Hill and Court Enhanced SANG Maintenance Plan



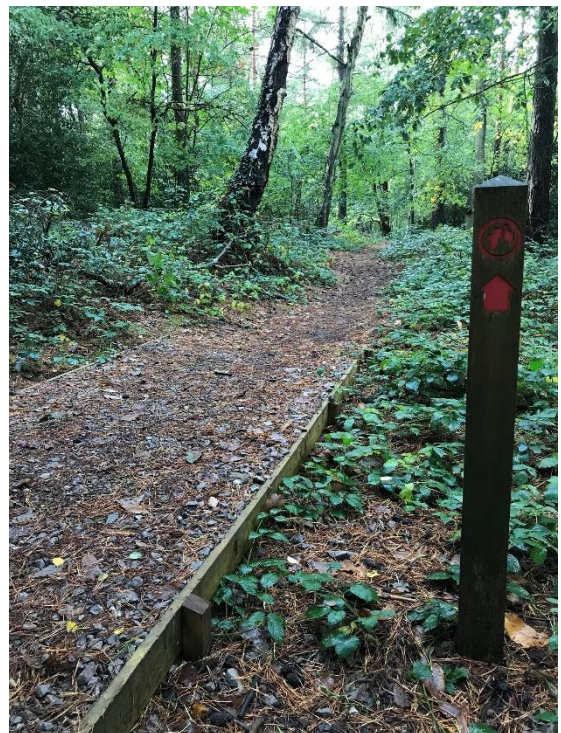
Entrance noticeboard with integrated map panel



Site entrance signage



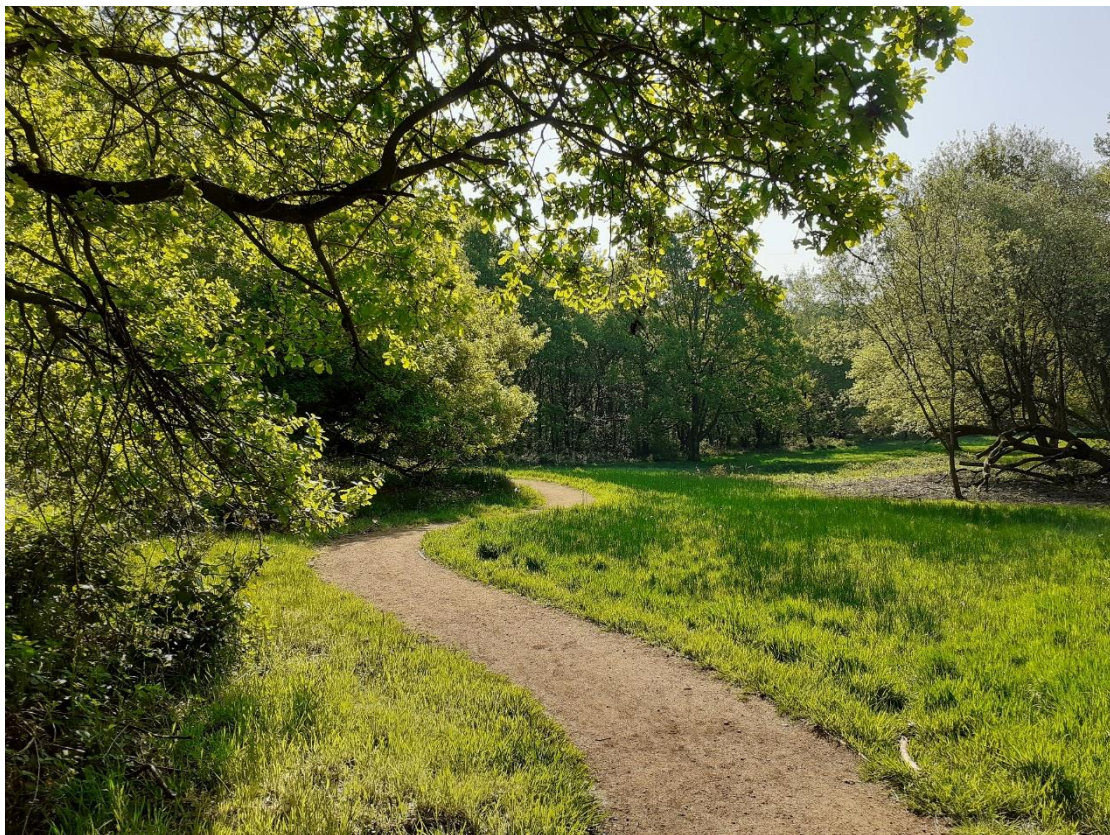
Bespoke carvings highlighting the SANG



Waymarkers showing alternative routes throughout the SANG

## 2.2 Access

- At Ambarrow Hill, **archaeological mapping** was undertaken to identify where features that require protection are located and this was used to inform the exact location of the circular path at this site.
- **Main entrance:** removal of invasive Laurel adjacent to the car park has helped improve views into the car park and provide a more welcoming entrance.
- **Existing pedestrian entrances: Vegetation and scrub** clearance around pedestrian entrances improves visibility into the sites.
- **Paths:** A main circular route has been created and way-marked to join Ambarrow Hill and Court. This follows older site plans showing an indicative layout as agreed with the National Trust on site.
- **Raise level of southern access entrance (Maybrick Close)** to prevent flooding and direct water into the adjacent ditch.



An example of the series of newly laid pathways

## 2.3 Furniture

New site furniture will enhance visitors' use of the SANG as well as providing a more welcoming and attractive appearance to the area.

- New **picnic benches** provided at the 'bird feeding area' and within the existing picnic area at Ambarrow Court.
- New bespoke **seating** is provided at strategic points around the sites, to allow visitors to enjoy the visual amenity of the sites and also where rest points may be required. In particular, a bench has been replaced on top of Ambarrow Hill and benches at various points around Ambarrow Court.
- New **bins** are installed at entrances to Ambarrow Court. These are combined litter and dog-waste bins in line with the Bracknell Forest practice of using combined bins. Designs have been chosen so as to be in-keeping with the natural theme of the SANG.
- **Renewal of accessible ramp** provides a more stable and well graded route for users through the woodland.
- A new **cycle rack** is provided at the car park to allow more visitors to arrive by bicycle.

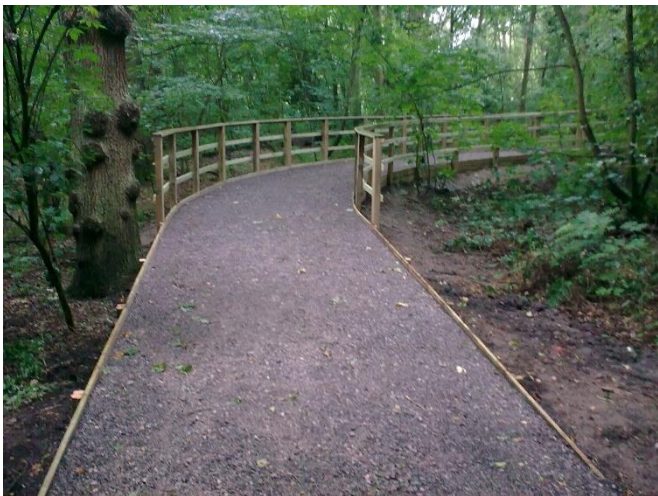


All ability picnic benches





Bespoke carved view-point benches with site specific designs



Ramped walk-way providing interesting and all ability access though the woodland



Bike rack loops promoting local access to the SANG

## 2.4 Habitat Management

Work has been carried out in order to enhance the nature conservation interest of the SANG by creating a variety of vegetated areas and habitats for different species. Vegetation clearance and management also increases the safety and security of the sites for users.

- **Wildflower planting** along with continued management within the meadow area will increase biodiversity and aesthetic value of this habitat.
- **Slope restoration** to reduce erosion of Ambarrow Hill and direct users onto key paths whilst protecting the archaeological value of banks and ditches at the site, rustic log steps have been installed up two sides of the hill.
- **Tree management** to ensure safety of users on principal and secondary paths.
- **Pond restoration** existing boggy areas that previously formed a pond supporting wetland flora have been excavated and planted to provide an additional feature in the SANG.
- **Invasive plant removal** such as laurel, rhododendron and bamboo that reduce biodiversity value and limit some views within the sites have been removed. Some supplementary planting of native tree and shrubs may be required in newly cleared areas to enhance natural regeneration.
- **Wildlife features** such as bat boxes and bird boxes have been installed within different areas of the SANG to improve opportunities for biodiversity.



'rustic' log steps up to Ambarrow Hill



new ponds providing improved habitat and site features



Stag beetle loggeries



improved woodland and verge planting

### 3 Monitoring

Local planning authorities are required to keep a copy of any planning obligation together with details of any modification or discharge of the planning obligation and make these publicly available on their planning register.

Any local authority that has received developer contributions is required to publish an infrastructure funding statement at least annually.

Local planning authorities are expected to use all of the funding they receive through planning obligations in accordance with the terms of the individual planning obligation agreement. This will ensure that new developments are acceptable in planning terms; benefit local communities and support the provision of local infrastructure.

For the financial year 2019/2020 onwards, any local authority that has received developer contributions (section 106 planning obligations or Community Infrastructure Levy) must publish online an infrastructure funding statement by 31 December 2020 and by the 31 December each year thereafter.

A proportion of the funding obtained through the S106 agreement will provide resources to ensure the full package of avoidance and mitigation measures are monitored to ensure their continued effectiveness. Details of the monitoring and review of the SPA SPD are outlined in Section 4.7 of the document.

#### 3.1 Visitor Usage

Visitor surveys carried out as part of the Bracknell Forest SPA Avoidance and Mitigation Strategy in 2006 found the following results:

- 52% of visitors use the sites for exercising their dogs, followed by 17% walking and 7% jogging.
- 50% of people used the sites for between 30 minutes and 1 hour indicating that most visitors only visit for a short time.
- 100% of visitors felt safe when visiting the sites
- 61% rated the sites as not busy and 83% would continue to use the sites if visitor numbers doubled.

#### Visitor Numbers

Total visits per year – 32,000 (existing)

Annual visitors – 190 (using current visitor data)

Potential visitor capacity - 900 (rounded down).

#### Accessibility

- 76% of visitors arrive at the sites by car followed by 22% on foot and 2% by bicycle.
- 81% of visitors travelled less than 5 kilometres to the sites although an unusually high 7% travelled more than 20 kilometres.
- Average journey time for most visitors was less than 10 minutes.

The TBH SPA SPD provides a full assessment of the baseline data and an assessment of the sites' potential to attract people from the SPA. An assessment of the sites'

capacity to attract visitors away from the SPA was made based upon existing visitor numbers and the SPA open space standards agreed with Natural England.

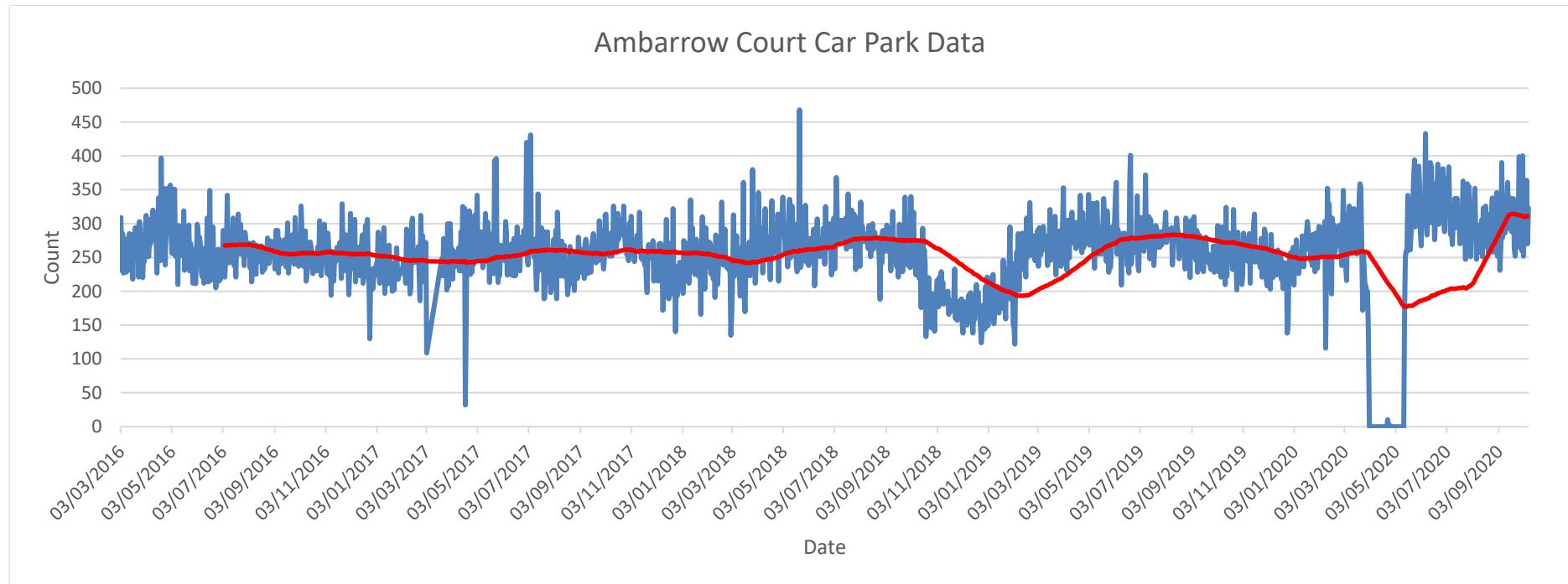
A further visitor survey was commissioned and carried out by Footprint Ecology during January and February 2018. In summary findings were as follows:

- The site continues to be used for a range of activities including;
  - Dog walking (73%)
  - Walking (19%)
  - Family outings (3%)
  - Commercial dog walking (1%)
  - Bird watching/wildlife enthusiasts (3%)
- Visitors continue to spend similar time on site with 38% spending less than 30mins, 54% 30mins-1 hour and 8% 1-2hours.
- Multiple reasons were given for visiting the site (note interviewees were able to give multiple responses);
  - Close to home (40%)
  - Well maintained paths (26%)
  - Good for dog (23%)
  - Wildlife/nature (22%)
  - Can/safe to let dog off lead (10%)
- Interviewees were asked to rate the following 1 (very poor) to 10 (very good);
  - Paths – 7.5
  - Parking – 8
  - Dogs – 7
- Suggested future site improvements included the following top answers;
  - **None**, no improvements (47%)
  - Better paths (21%)
  - Dog Fouling issues (12%)

It is notable that there is an increase in dog walking on site following the initial 2006 survey (52%-73%). Around half of visitors felt there was no requirement for further site enhancements and that the second highest suggested improvement of 'better paths' comes prior to several path improvement projects carried out during 2019 (see section 7).

### 3.2 Vehicular usage

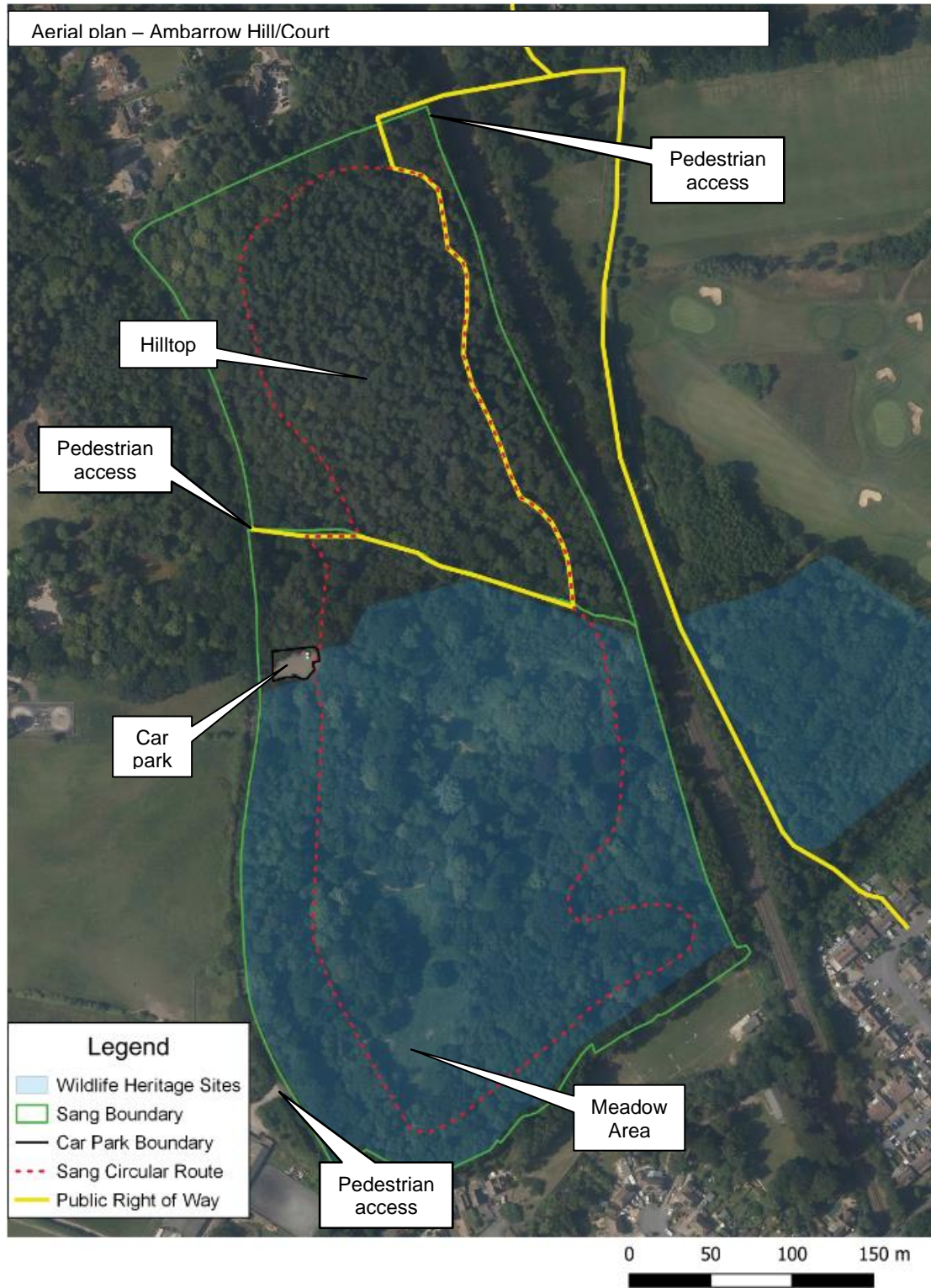
Car Park Counters were installed in early 2016 at the SANG car park to further monitor continuing site usage.



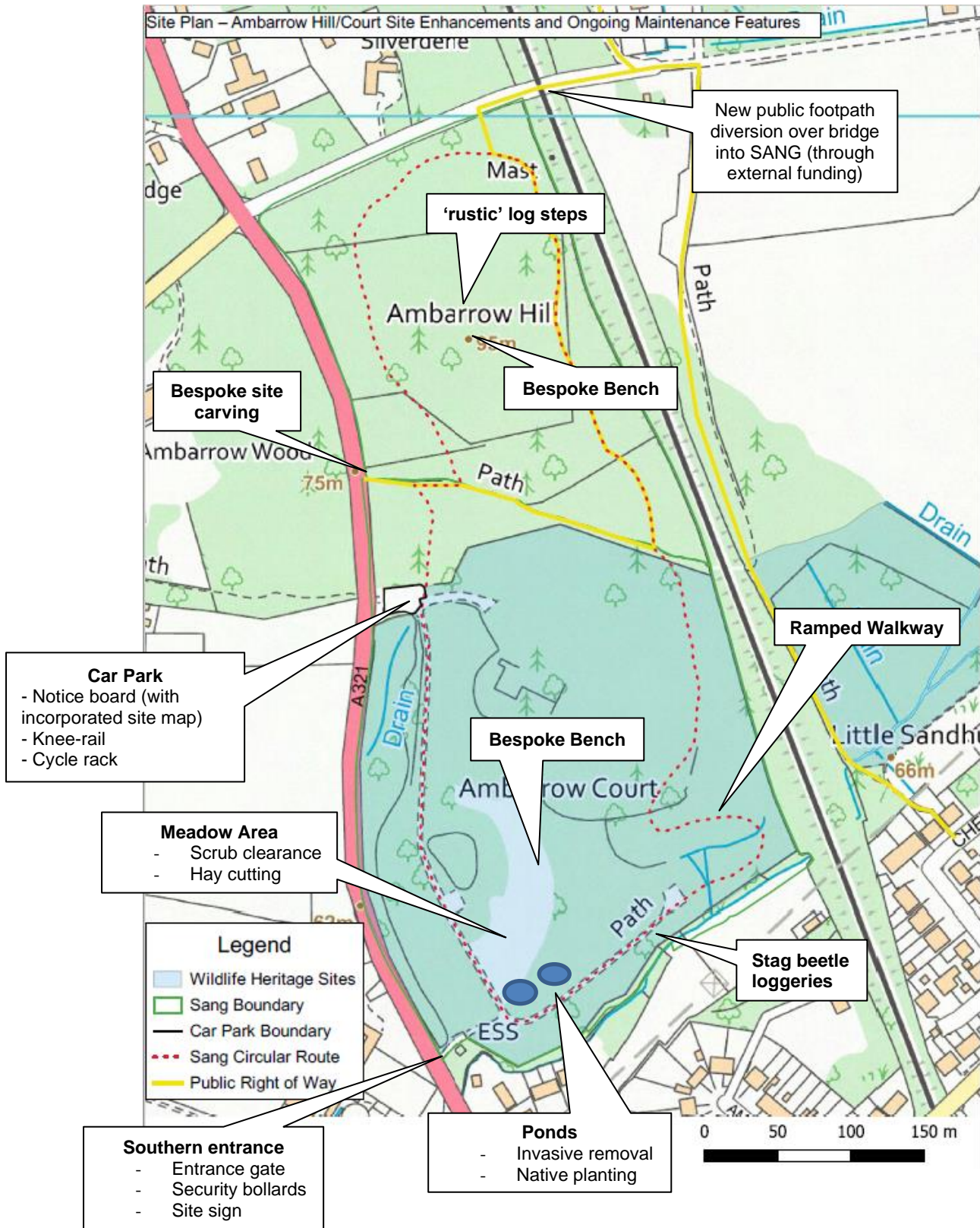
Following installation of the car counters it has been noted that visitor use, arriving by car continues to be high and that car parking is often at capacity. Where the trend from data collected shows a general consistent use throughout the period, apart from a slight drop in the winter of 2018 and a current increase through the summer of 2020. There is a noticeable fall in the Spring of 2020 due to the closure of all car parks due to COVID-19 lockdown restrictions.

## 4 Site Plan

### 4.1 Site Plan – Ambarrow Hill and Court (aerial)



## 4.2 Site Plan – Ambarrow Hill/Court SPA Mitigation Works and future Maintenance





## 5 Monitoring/Maintenance Programme

Following the implementation of the site based enhancements required to upgrade the site to SANG standard a series of continuing management is required to maintain the site at a desirable level.

Ref	Management and maintenance operations	Frequency / timing
1	<b>Biodiversity surveys and monitoring</b>	
	Initial baseline surveys will be undertaken. Followed by appropriate surveys adding value to future management.	Relevant timing for species / habitat
2	<b>Existing Woodland</b>	
	Selective pruning of branches of trees that overhang the paths. Overhead clearance to be 2.4m above ground level.	Ongoing
	Where appropriate and without compromising safety, existing dead stems shall be left in situ to provide wildlife habitat.	Ongoing
	Cut deadwood logs should be used to create log habitat piles. Stag beetle loggeries should also be created by setting groups of logs vertically, partly buried in the ground.	Ongoing
	Scalloping of woodland edge and maintenance of glades – to increase shelter, warmth and variety of edge habitat for invertebrates.	Autumn/Winter
	Dead, diseased and dangerous wood to be made safe from at least 5m to both sides of footpaths in order to protect the public from falling branches and/or trees.	Safety/ongoing
	Manage and remove non-native, invasive species, promoting native woodland species.	Annually throughout Winter.
3	<b>Existing ground flora</b>	
	Condition of ground flora to be monitored and action taken to avoid damage and decline. Actions could include using dead-hedging to create barriers to discourage development of desire-line paths. Regeneration should be encouraged where the canopy is opened up promoting sun bathed glades.	Ongoing
4	<b>Meadows</b>	
	Cutting and removal of encouraging scrub into grassland areas.	Late Summer/Autumn

	Annual cutting and removal of meadow growth to remove nutrients and maintain sward diversity.	Late Summer/Autumn
	Reseeding grasslands. Monitor species composition. If required harrow and reseed with suitable mix at 20-30kg per Ha.	Autumn/winter
<b>5</b>	<b>Ponds</b>	
	Replace or repair liners. Monitor water levels.	Replace/repair as required following inspections.
	Promote native aquatic vegetation. Remove any non-native or invasive species seen to have a detrimental effect to pond production.	Remove non-native/invasive weed growth 6 monthly. Late Summer/Autumn.
<b>6</b>	<b>Clearance of ditches</b>	
	Ditches and existing and new culverts to be cleared out and de-silted as necessary. Repair erosion to sides of ditches following storm events if necessary.	Site inspection should identify work required, to be undertaken within 1 year.
<b>7</b>	<b>Car Park</b>	
	Knee-Rail. Inspect and repair for damage and/or vandalism.	Replace and repair following site inspections.
	Bike-rack. Weed vegetation growth and top up gravel material as required.	Every 2 months throughout the summer.
	Height barrier. Maintain and repaint when necessary, providing a safe and attractive entranceway.	Where necessary following 6 monthly inspections.
	Line marking. Provide clearly marked bays to allow for optimum parking and not to block access to out to site.	Inspect every 5 years and repaint where necessary.
<b>8</b>	<b>Site furniture</b>	
	Any vandalised or accidentally damaged furniture will be replaced as soon as possible.	Work undertaken within 6 months of notification.
	Site furniture to be checked for structural issues and health and safety requirements and made good as necessary.	Annual site inspections. Repair/replacement undertaken within 6 months of notification. Unsafe furniture to be made safe or decommissioned within 14 working days of notification.

	Interpretation boards and directional signage: Replace damaged/vandalised boards as soon as possible. Offensive graffiti should be removed within 5 working days of being reported. Interpretation boards should be reviewed every five years to ensure information and presentation is up to date.	Replace damaged boards and signs as soon as possible. Remove offensive graffiti within 14 working days of reporting.  Five year review of information on boards and signage/waymarkers.
<b>9</b>	<b>Footpaths</b>	
	Damage to path surfaces and edgings to be checked and made good as soon as possible.	Annual inspection. Work undertaken within 14 working days or area made safe if health and safety issue, otherwise repairs undertaken within 6 months of notification.
	Any worn areas or lost material to be topped up	As required following site inspections.
	Ramped walkway. Inspect for worn or lost material. Replace/repair any damage to hand rails or other wooden features.	Any structural or safety aspects to be repaired asap. Smaller repairs to be completed within 6 months.
	Soil and leaf mulch. Remove through twice annually sweeping the main concrete pathway for leaf and soil build-up. Retain width and dry pathway.	Twice through Autumn period.
	Log-lined steps up to Ambarrow Hill. Inspect and maintain for safety.	Replace when required. Top up material on treads to maintain level.
<b>10</b>	<b>Litter picking, bins and fly-tipping</b>	
	Clean litter from site. Monitor level of littering to determine appropriate frequency of litter picks. Picking should be targeted more frequently around pathways, entrances and outer boundaries.	Frequency to be determined following monitoring of litter levels and review arrangements 6 monthly.
	Litter bins should be emptied weekly, and immediate surroundings litter picked. Performance specification should be that bins will never be more than 75% full.	At least weekly, but more often if monitoring shows bins are filled more quickly.
	Dog fouling should be monitored to check if specific clearing operations are needed, in conjunction with educational information and appropriate signage. Consider one-off operations to spray fouling with biodegradable paint as part of educational initiative followed by clean-up and further monitoring.	Response and frequency to be agreed following monitoring. Review arrangements 6 monthly.

	<p>Fly-tipping should be removed as soon as possible. Evidence of source should be gathered if possible during clean-up operation. Cordon off prior to removal if necessary for health and safety reasons.</p>	<p>Removal should be within 14 working days of notification.</p>
--	--	--

## 6 SANGs Criteria Assessment

It must be noted that the primary aim of enhancement was to encourage further visitor access. Works facilitated this by providing management for all weather access, stiles where necessary, site safety in terms of crossing between units and allowing dogs to run off the lead, plus interpretation, route marking, promotion etc. BFC 'pump prime' enhancement works prior to inhabitants moving into the dwellings to ensure occupations are not held up and that people do not develop a habit of visiting other sites, such as the SPA.

The following provides a list of relevant factors that were considered when analysing the site's suitability to meet NE SANGs criteria based on Natural England's guidance.

	Criteria	Pre-SANG Features	With SANG Enhancements and ongoing maintenance
<b>Must/should haves – criteria essential for SANGs</b>			
1	Parking on all sites larger than 4Ha (unless the site is intended for use within 400m only)	Car Park on site at Ambarrow Court with 16 spaces.	Improved visibility at car park and links into and around site. Anticipated usage still allows for 16 spaces.
2	Circular walk of 2.3-2.5km	Choice of routes available around site, dependant on availability.	Improved surfacing providing choice of accessible routes around site. Links to wider countryside and neighbouring SANGs as well as longer publicised Rambler Route. Live planning application for the adjacent Silverdene Woodland to become part of the SANG. If granted this will extend the area of the SANG and length of circular walk.

3	Car parks easily and safely accessible by car and clearly sign posted.	Highway sign and main site entrance sign.	Site entrance signs shall be maintained with visibility improved though vegetation clearance.
4	Access points appropriate for particular visitor use the SANGS is intended to cater for.	Main vehicular entrance point and five pedestrian entrance points.	All entrance points cleared and finger-posted or signed to improve access and attractiveness.
5	Safe access route on foot from the nearest car park and/or footpath.	Choice of routes around site from car park and entrance points.	Improved links between sites and way-marked routes around the sites. In addition, way-marked routes to the wider countryside and Horseshoe lake SANG will be provided.
6	Circular walk which starts and finishes at the car park.	Car park located at the centre of the site allowing for a choice of routes around site.	Improved links, signage and information on routes from car park into and around site. New circular route starts and finishes at the car park.
7	Perceived as safe – no tree and scrub cover along part of walking routes.	Areas of open woodland and meadow around site.	Circular route incorporates variation in habitat types, including enhanced features such as meadows and wetlands (ponds).
8	Paths easily used and well maintained but mostly unsurfaced.	Mix of surfaced and unsurfaced paths	Circular route provides some surfaced and unsurfaced paths along well marked route. Compacted gravels provide a more natural feel.

9	Perceived as semi-natural with little intrusion of artificial structures.	Minimal site furniture.	New bespoke and all ability benches and signage added to enhance visitor experience whilst remaining in keeping with the natural environment.
10	If larger than 12 Ha then a range of habitats should be present	The site provides area of ancient woodland, parkland and meadow	Experiences will be enhanced through interpretative material and habitat enhancements.
11	Access unrestricted - plenty of space for dogs to exercise freely and safely off the lead.	Most paths are largely unhindered.	Access further improved and there are no restrictions on dogs.
12	No unpleasant intrusions (e.g. sewage treatment works, smells etc.).	The road and railway are screened from the site by vegetation. There are no sewage works etc. in the vicinity.	Native vegetation retained and promoted adjacent road and railways.
13	Clearly signposted or advertised in some way.	Site signposts and site website for Ambarrow Court.	New site signs, combined site interpretation panel, directional fingerposts and way-marked around site.
14	Leaflets or websites advertising their location to potential users. (distributed to new homes in the area and at entrance points and car parks).	Site website for Ambarrow Court.	New site leaflet and SANG webpage. Further promoted through SAMM project with additional leaflet and webpage.

<b>Desirable features</b>			
15	Can dog owners take dogs from the car park to SANGs safely off the lead.	Car park adjacent links through site.	Improved links and signage from car park into site.
16	Gently undulating topography.	Ambarrow hill adds interest to the topography	Access throughout the route and up to the hill are improved.
17	Access points with signage outlining the layout of the SANGS and routes available to visitors.	Some site information for Ambarrow Court	New interpretation panels (with map), directional fingerposts and way-markers around site. New leaflets include SANG map/routes.
18	Naturalistic space with areas of open (non-wooded) countryside and areas of dense and scattered trees and shrubs. Provision of open water is desirable.	The site provides area of ancient woodland and meadow.	Habitat enhancement works to improve wildlife and landscape value. New series of ponds created.
19	Focal point such as a view point or monument within the SANG.	Ambarrow Hill provides a unique focal point.	Improved access to and up the hill, including seating at the top.



## 7 Final spend on SANG Enhancement Works

These final costings incorporate SANG spend on Ambarrow Court/Hill, where various factors such as a competitive tendering process, inflation and revised site requirements have led to an overall reduction in anticipated budget.

Works	Location	Unit Cost	Quantity	Description of works carried out	Itemised spending	Date works completed	SANG enhancement budget	SANG enhancement Spend
<b>Information &amp; Interpretation</b>								
Site entrance sign	Main entrance	£250	2	Two signs	£567.24	30/09/15	£500	£567.24
Small site entrance sign	Secondary entrance	£150	1	Three site entrance signs	£209.49	30/09/15	£150	£209.49
Roadside directional sign	Wokingham Road	£1,000	1	Improved directional sign	£550.00	27/10/17	£1,000	£550
Site noticeboard with combined interpretive panel		£2,500	2	Design for Interpretation panel and marker posts noticeboard	£4,064.00	05/09/17	£5,000	£6,300.00
Bespoke entrance sign	Ambarrow Hill entrance	allowance	allowance	Adjustments made to height and repair of noticeboard door	£1,750.00	10/08/15		
Fingerposts	Around site	£400	4	Bespoke roadside entrance sign (Ambarrow Hill and Court)	£486.00	05/09/17	£1,000	£1,400
Waymarkers	Around circular route	£100	10	See noticeboard costs above	£1,400.00	16/10/19	£1,800	£1,800
SANGS leaflet	n/a	allowance	10,000	Installation of 23 waymarker posts across site	£1,560.00	02/03/18	£1,000	£1,560.00
Site Leaflet	n/a	allowance	5,000	500 leaflet printed	£2,046.00	30/09/16	£2,500	£2,046
Installation costs	(as above)	allowance	allowance	N/A	£290.00	30/09/15	£5,000	£4,435
				Ambarrow Hill directional plaques	£95.00	03/07/19		
				Manufacture and installation for interpretation panel and marker posts	£4,050.00	05/09/17		
<b>Total information &amp; interpretation</b>							<b>£20,750</b>	<b>£17,068</b>
<b>Access</b>								
Archaeological mapping	Ambarrow Hill	allowance	allowance	mapping	£2,470.00	10/10/14	£5,000	£2,470
Path and entrance clearance	All entrances, sightlines to car park	£300/day	5	vegetation clearance	£480.00	06/01/15	£1,500	£1,755
				Fence around pond area	£1,275.00	22/01/18		
				Walkway through woodland	£16,552.49	30/06/11	£20,000	£16,552
Path surfacing (hoggin)	Woodland area, Ambarrow Court	allowance	allowance	Path redesign and new path to woodland	£5,695.00	13/03/19	£30,000	£15,845
	Woodland area, Ambarrow Court	£30 / m	1000	Path over bridge enhanced and altered woodland path route	£1,470.00	13/03/19		
				Path through meadow	£5,620.00	13/03/19		
				Cross drain and path to second picnic table	£3,060.00	01/04/19		
Road surfacing	Southern entrance	allowance	allowance	surfacing	£2,677.00	27/10/15	£10,000	£3,157
				Bollard (+ installation)	£480.00	22/06/20		
Installation costs		allowance	allowance	Fence upgrade at roadside 2nd entrance	£1,250.00	09/01/20	£5,000	£1,250
<b>Total access</b>							<b>£71,500</b>	<b>£41,029</b>
<b>Furniture</b>								
Bins (incl. installation)	Site entrances	£570	3	3 seating benches installed	£1,317.00	08/09/14	£1,710	
Accessible gates (incl. installation)	Southern entrance	£180	1	bespoke carved viewpoint bench (incl. installation)	£3,480	08/01/2020	£180	
Seating - benches (incl. installation)	Around sites	£680	6	N/A (incl. installation)	£792.56	06/01/15	£4,080	£4,797
Staggered post and rail entrance	Public Right of Way	allowance	allowance	Gate at railway crossing (incl. installation)	£450.00	11/10/18	£500	£792.56
Field gate	Northern entrance, Ambarrow Hill	£200	1	all ability bench	£2,850.00	N/A	£200	£450
Picnic benches	In open areas	£1,585	3	Cycle rack	£500.00	19/09/15	£4,755	£2,850
Cycle rack	Car park area	allowance	allowance				£500	£500
Bridges	Across ditch, woodland area	£5,000	1				£5,000	
Installation costs		allowance	allowance				£10,000	£6,629.79
				N/A	£225.00	11/08/14		
				Cycle rack installation costs	£3,604.79	19/09/15		
				Bespoke Ambarrow Hill feature seating	£2,800.00	16/10/2019		
<b>Total furniture</b>							<b>£26,925</b>	<b>£16,019</b>
<b>Habitat Management</b>								
Wildflower seeding/planting	Meadow area	allowance	allowance	Bulbs for planting	£38.27	23/11/18	£1,000	£369
				Wildflower seed	£330.50	01/04/19		
Pond restoration (clearance, excavation)	Adjacent to meadow	allowance	allowance	Pond creation	£1,542.00	07/10/16	£2,000	£3,784
				Additional pond work (reprofile)	£2,242.00	18/12/17		
Slope restoration repairs	Ambarrow Hill	allowance	allowance	Revetment and step work	£1,350.00	13/03/19	£20,000	£5,700
				Additional revetment steps	£1,250.00	13/03/19		
				steps up alternative side of Hill	£3,100.00	13/05/20		
Ditch clearance	Ambarrow Hill	£30 / m	100				£3,000	
Removal of invasive species	Various including car park	£300 per day	10	Rhododendron removal and treatment	£1,680.00	16/03/19	£3,000	£7,080
				Laurel removal	£5,400.00	22/01/20		
Wildlife features (bird boxes, bat boxes, etc)	Across site	allowance	allowance	wildlife boxes	£377.55	16/12/14	£500	£479
Native woodland planting	Cleared areas	£200 / day	5	Tree planting	£231.72	04/12/18	£1,000	£232
Tree and scrub management	Adjacent to paths, site entrances	£300 per day	10	Tree clearance in car park	£850.00	21/04/17	£3,000	£4,990
				Clearing trees/scrub around paths and linking meadows	£1,920.00	18/12/17		
				Tree thinning and oak halo	£2,220.00	10/03/19		
Installation costs				N/A	£95.00	28/01/15	£5,000	£2,393
				Loggery installation	£560.00	10/03/19		
				N/A	£1,320.00	17/02/17		
				Coir pallets and rolls	£418.40	21/06/19		
<b>Total habitat management</b>							<b>£38,500</b>	<b>£25,027</b>
<b>TOTAL COST</b>							<b>£157,675</b>	<b>£99,143</b>

## 8 Glossary

<b>LNR</b>	Local Nature Reserve
<b>SANGS</b>	Suitable Alternative Natural Green Space.
<b>SPA</b>	Special Protection Area. Designated under the EU Directive 79/409 on the Conservation of Wild Birds.
<b>WHS</b>	Wildlife Heritage Site

## 9 References

Bracknell Forest Borough Council (2007) Medium Term Objectives. Available to download from [www.bracknell-forest.gov.uk](http://www.bracknell-forest.gov.uk).

National Trust Byelaws 1965 (<http://www.nationaltrust.org.uk/main/print/w-byelaws-1965.pdf>)

National Trust (2007) Our Future – join in: Our Strategy to 2010 and Beyond. Available to download from [www.nationaltrust.org.uk](http://www.nationaltrust.org.uk).