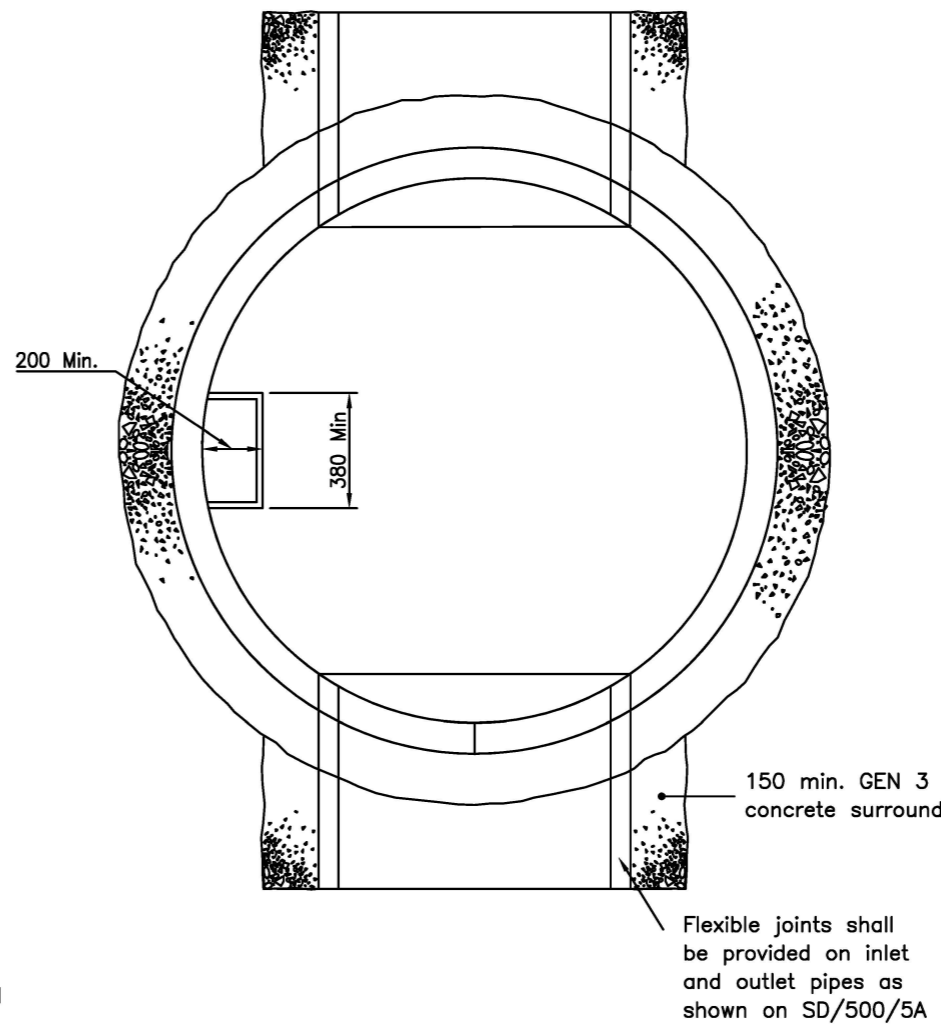
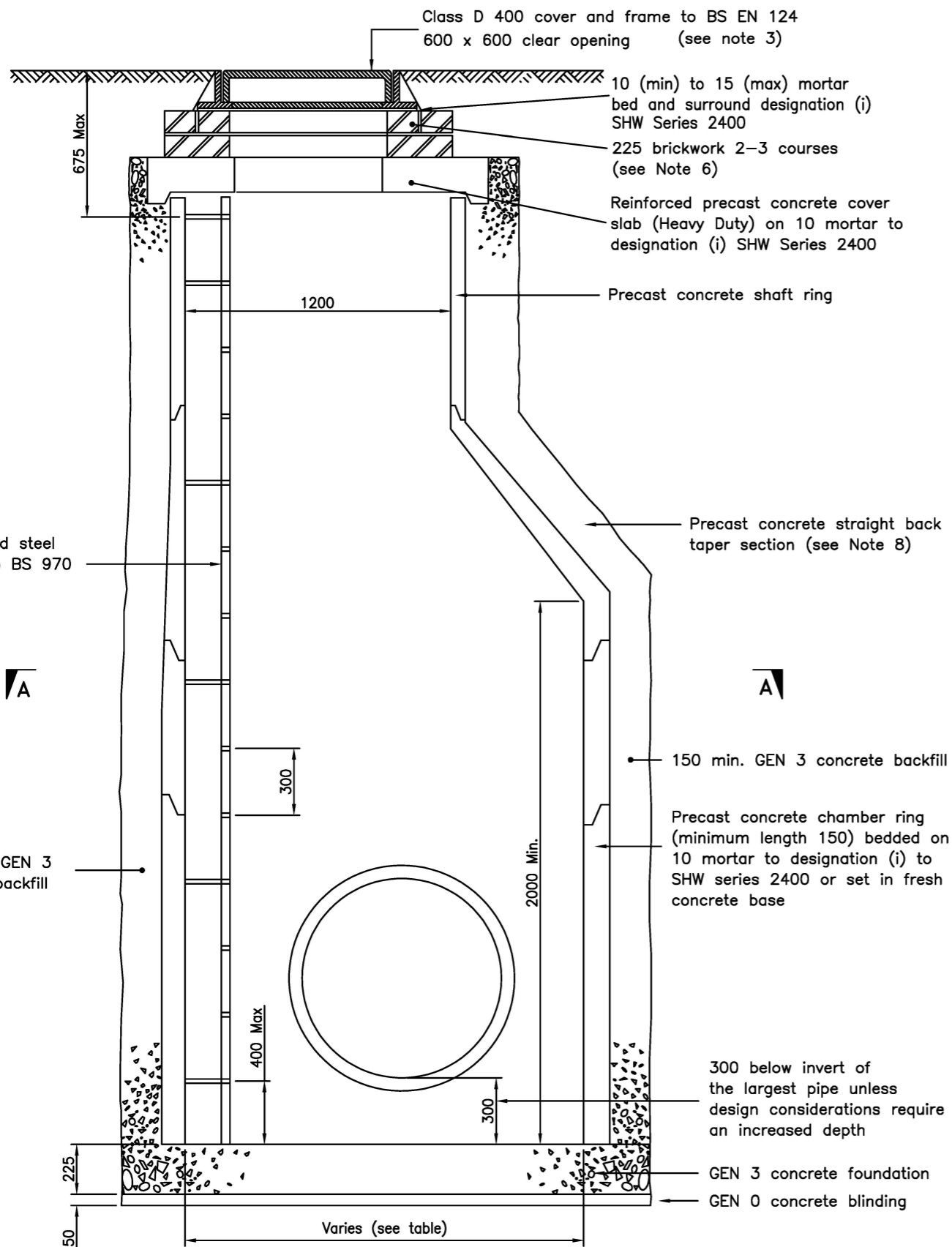


- Notes
- All dimensions are in millimetres
 - Water Authorities Association guide Sewers for Adoption applies except where modified by this drawing.
 - Cover and frame to be Class D400 Badgemarked, HD, and Kitemarked and have a protective coating complying with BS EN 124: 1994. In areas of block paving an 'infill' type cover may be required.
 - Concrete to accord with:
BS EN 206-1
BS 8500-1 & 2
BS 8000
 - Catchpits to be positioned so that no part of the structure is under the kerb.
 - Entrance to catchpits to be positioned with consideration for safety.
 - Bricks to be to BS EN 771 HD Class B laid in English Bond in mortar to designation (i) SHW Series 2400.
 - Precast concrete chambers shall comply with BS EN 1917.
 - Precast concrete heavy duty cover slabs may be used in place of straight back tapers.
 - Mortar to designation (i) SHW Series 2400 or a proprietary sealant shall be used in all joints between precast concrete units.
 - Finish to internal concrete to be F1 on formed surfaces and U2 on unformed surfaces.
 - All voids beneath the catchpit structure shall be backfilled with GEN 0 concrete.
 - Ends of pipes shall be neatly built into the chamber and finished flush with mortar to designation (i) SHW Series 2400.
 - The nearest joints to chamber shall not be restricted by concrete
 - Safety chains or grills must be provided where pipe diameter exceeds 600.
 - Surface level tolerance +0 -6 in paved areas +15 -15 in verges.

Do not scale this drawing

C	APR 19	Updated title block	NR
B	JUN 13	Concrete grade revised	KPT
A	MAR 11	Amendments to Concrete & BS/EN standards	KPT
Rev	Date		Checked



Section A-A

Internal diameter of chamber	Diameter of largest pipe in chamber
1200	Less than 375
1350	375 - 450
1500	500 - 700
1800	750 - 900

CATCHPIT SIZES

Project
STANDARD DRAWINGS

Title
**CATCHPIT TYPE 2
PRECAST CONCRETE CONSTRUCTION
(Permitted Range of Depths-Cover to sump 3.0m-5.0m)**

Drawing No.
SD/500/6C

Scale **NOT TO SCALE** Date **MAY 04**

Department of Place,
Planning & Regeneration

