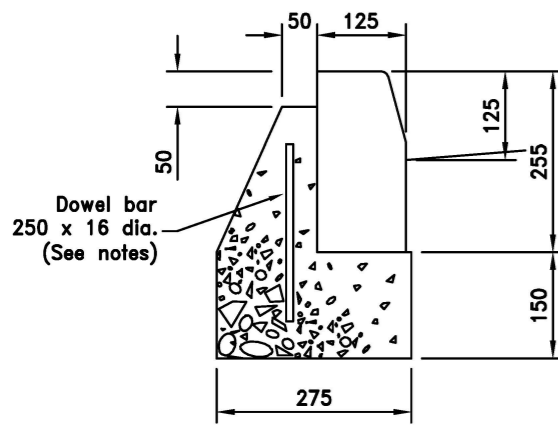
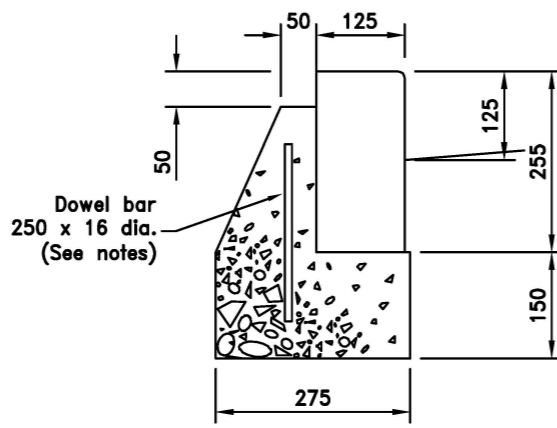


- Notes
- All dimensions are in millimetres
  - All kerbs to BS EN 1340
  - All insitu concrete to foundation and haunch to be GEN 3 concrete.
  - Kerb foundation to be laid on rolled sub-base of minimum thickness 100
  - The kerb bed and backing shall normally be laid in one operation
  - Where bed is laid in advance of kerbs 200 x 20 dia mild steel dowel bars will be required in backing at 450 centres and kerbs will be bedded on 10 min mortar designation (i) SHW Series 2400
  - Dowel bars may be required in backing to standard kerbs in circumstances where the kerbs are vulnerable
  - 300 x 16 dia dowel bars at 450 centres must be used with Safety Kerbs unless the backing concrete is brought level with top of kerb
  - Kerbs shall be laid with dry joints and closely butted to adjacent kerbs and channels
  - Transition kerbs to be used at all changes in kerb face
  - Channel blocks to be used where gradient is flatter than 1:150
  - For radii of 12m or less kerbs and channels of the appropriate radius shall be used
  - For radii between 12m and 18m straight kerbs 600 long shall be used
  - Cutting of kerbs and channels shall be by approved mechanical means
  - The length of any kerb or channel shall not be less than 300
  - Where channel blocks are laid to false falls the kerb face must be 100 min – 150 max
  - All kerbing supporting verge areas shall be backed as shown for SP kerb.
  - Conservation kerbs to be silver grey as manufactured by Marshalls Ltd. (or equivalent approved product).
- Do not scale this drawing

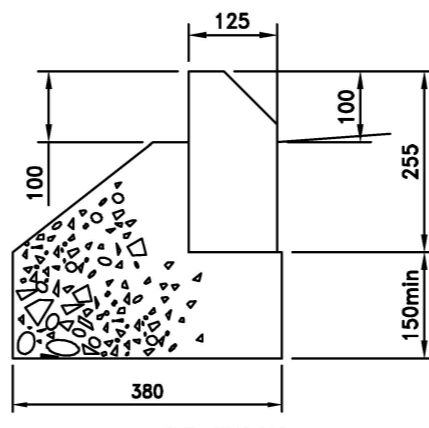
C	APR 19	Updated title block	NR
B	MAY 13	Various minor amendments	KPT
A	MAR 11	Various minor amendments	KPT
Rev	Date		Checked



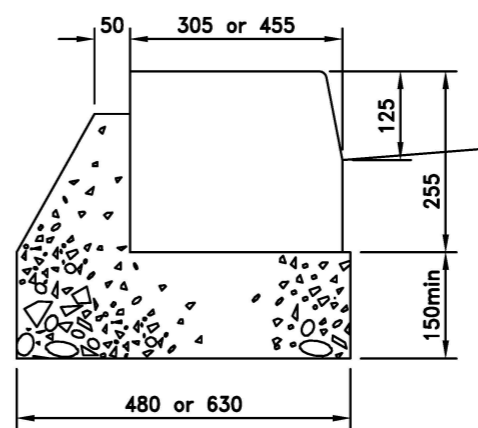
**HALF BATTER  
HB2 KERB**  
See Note 7



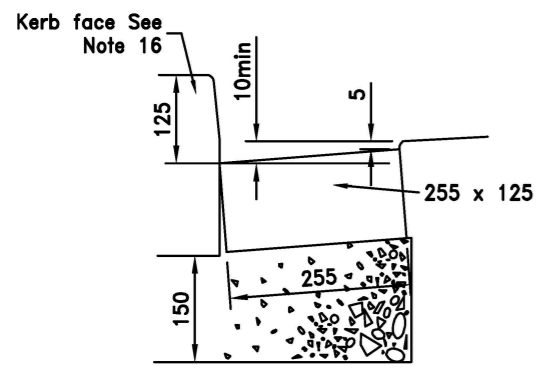
**BULL NOSED  
125x255 BN**  
See Note 7



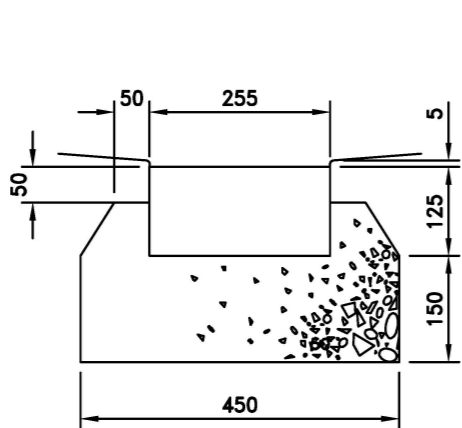
**45° SPLAY  
SP KERB**



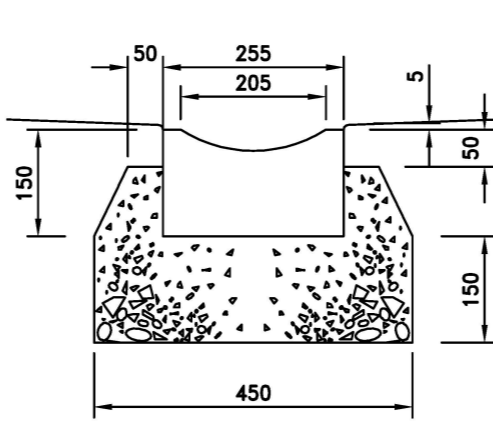
**QUADRANT  
QHB2 KERB**  
See Note 19



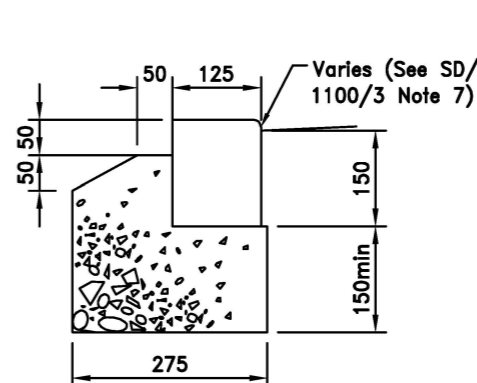
**SQUARE CHANNEL  
CS1 – Against kerb**  
See Note 17



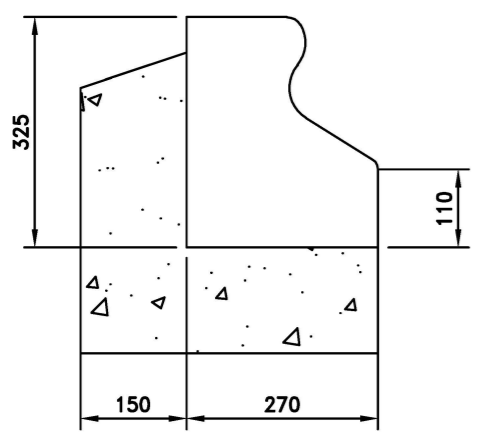
**SQUARE CHANNEL – CS1**



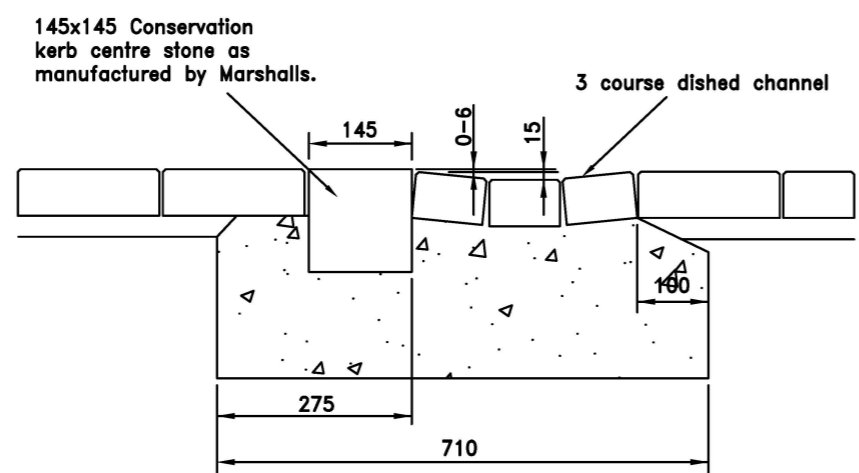
**DISHED CHANNEL – CD**  
(Footways only)



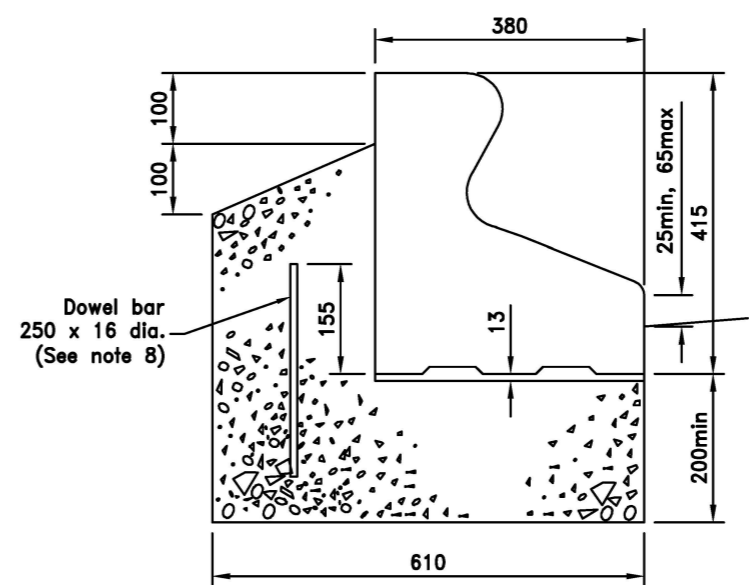
**BULL NOSED  
125x150 BN**



**MINI TRIEF**



**CONCRETE BLOCK DISHED CHANNEL**



**SAFETY KERB GST/2A**



Project **STANDARD DRAWINGS**

Title **CONCRETE KERBS AND CHANNELS**

Drawing No. **SD/1100/01C**

Scale **NOT TO SCALE** Date **MAY 04**

Department of Place,  
Planning & Regeneration