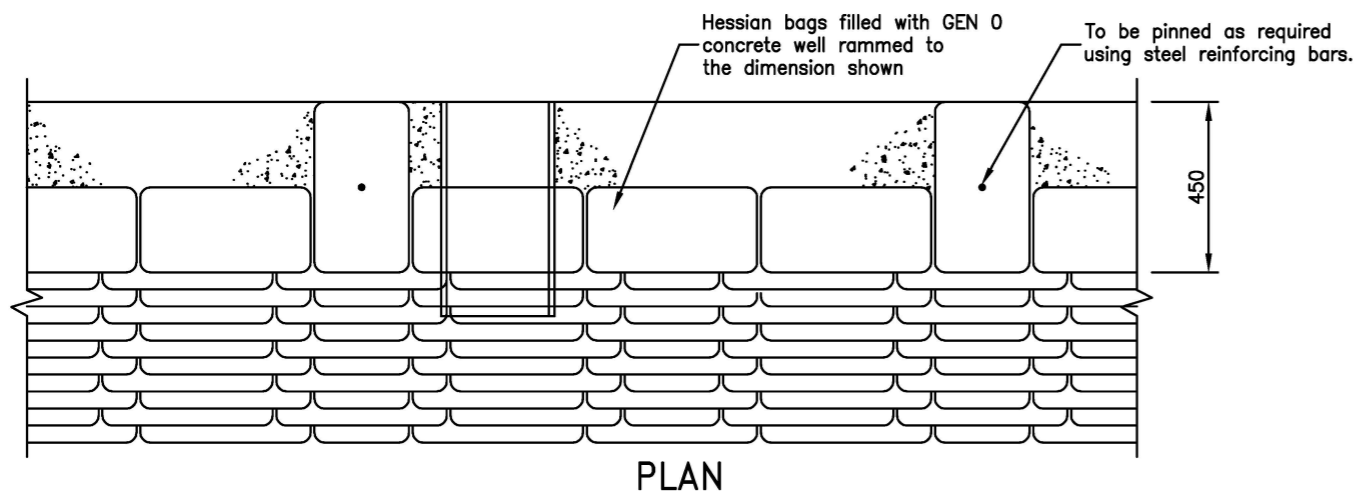
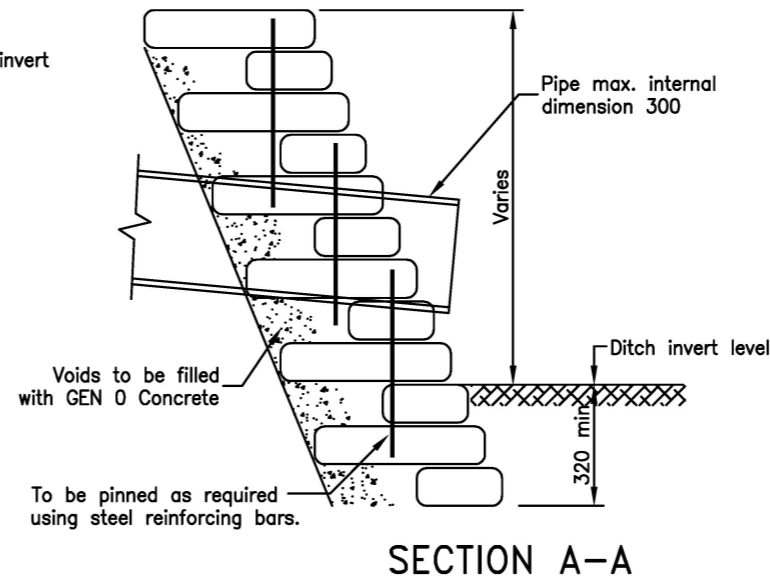
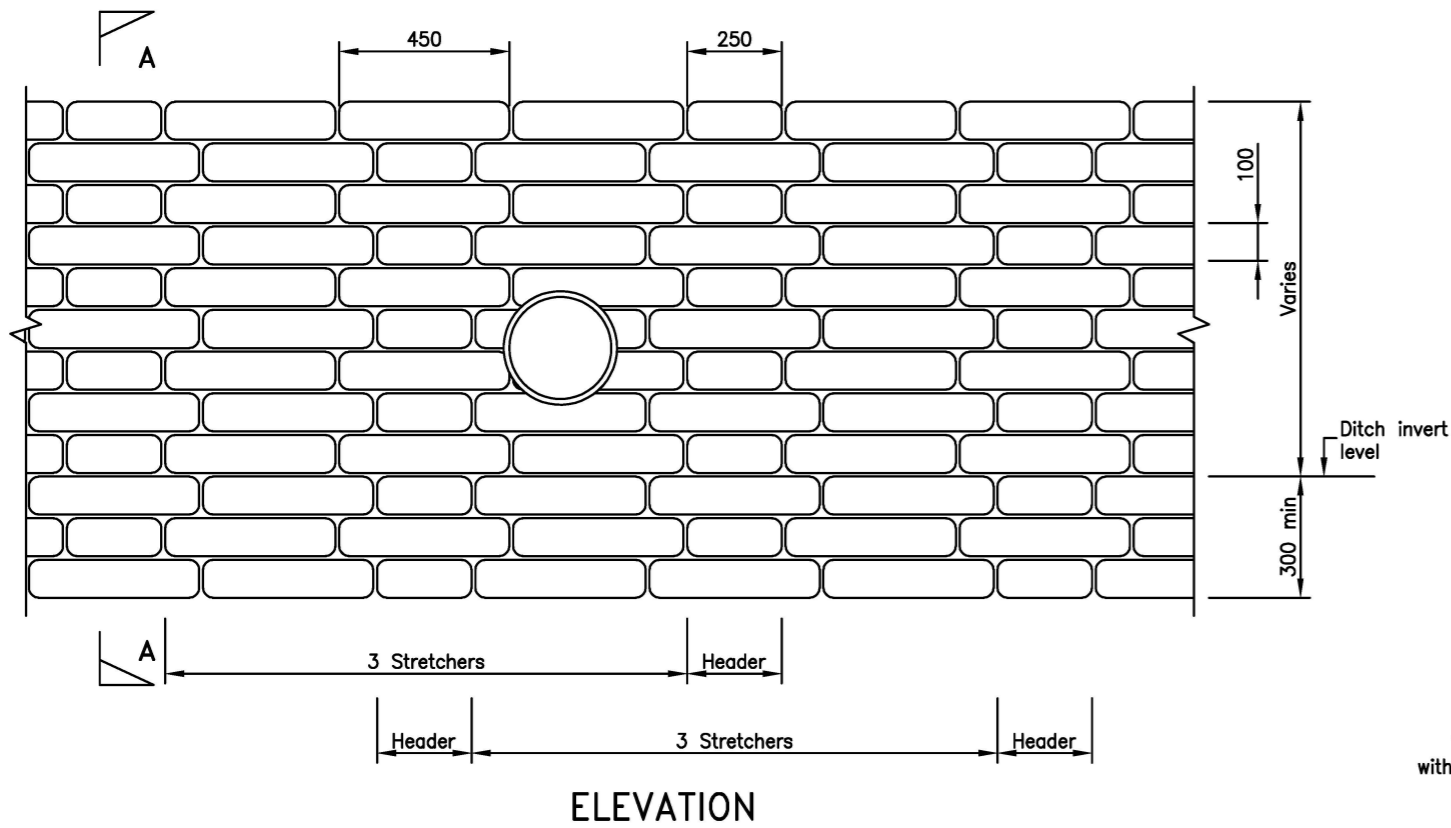


Drawing Number
SD/500/12C

- Notes
1. All dimensions are in millimetres unless shown otherwise.
 2. Bagwalling may only be used with the approval of the Engineer.
 3. This construction may also be used for outfalls.
 4. For outfall details see SD/500/9B.



Do not scale this drawing

Rev	Date	Description	Checked
C	APR 19	Updated title block	NR
B	Jun 13	Minor amendments	KPT
A	Mar 11	Concrete amended.	KPT

Project
STANDARD DRAWINGS

Title
CONCRETE BAGWORK HEADWALL TYPE 3

Drawing No.
SD/500/12C

Scale N.T.S. Date MAY 04

Department of Place,
Planning & Regeneration

