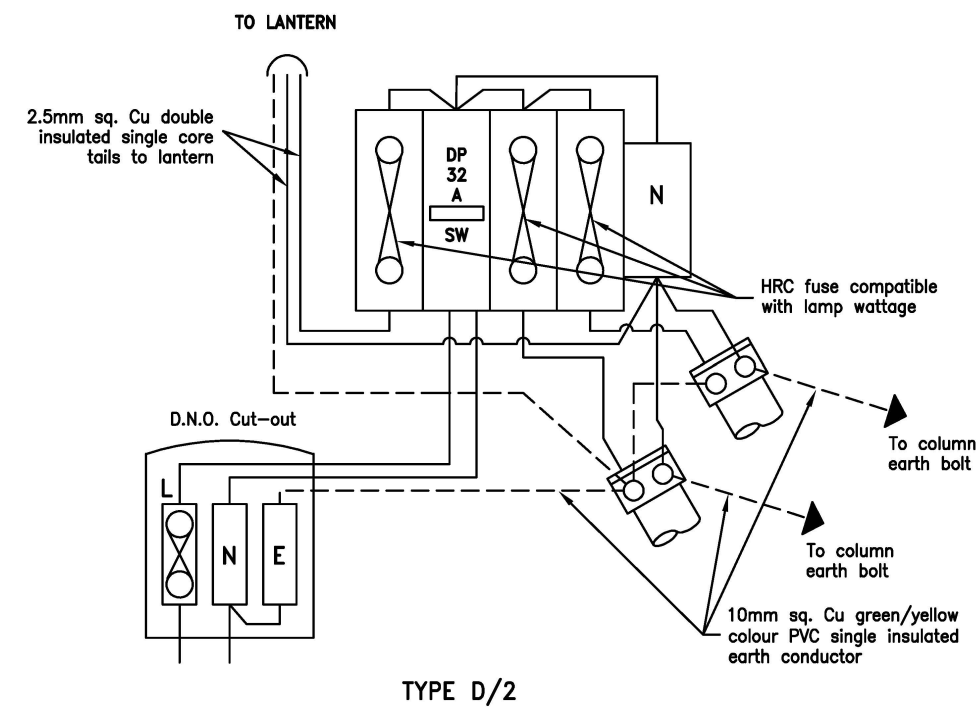
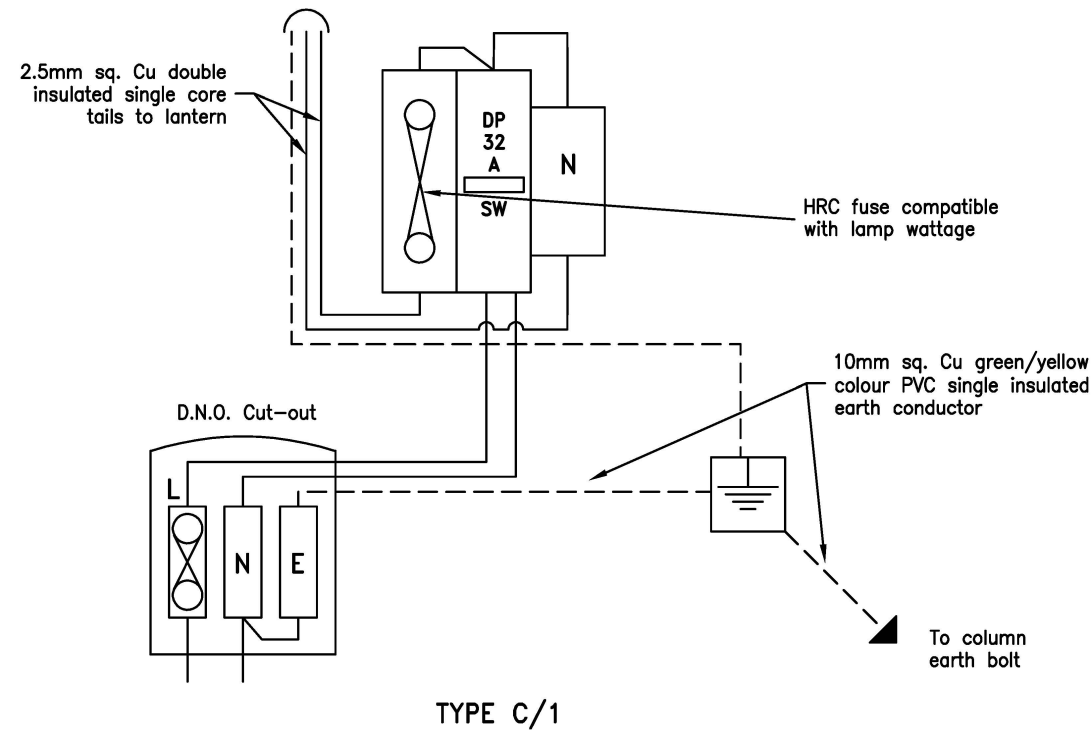
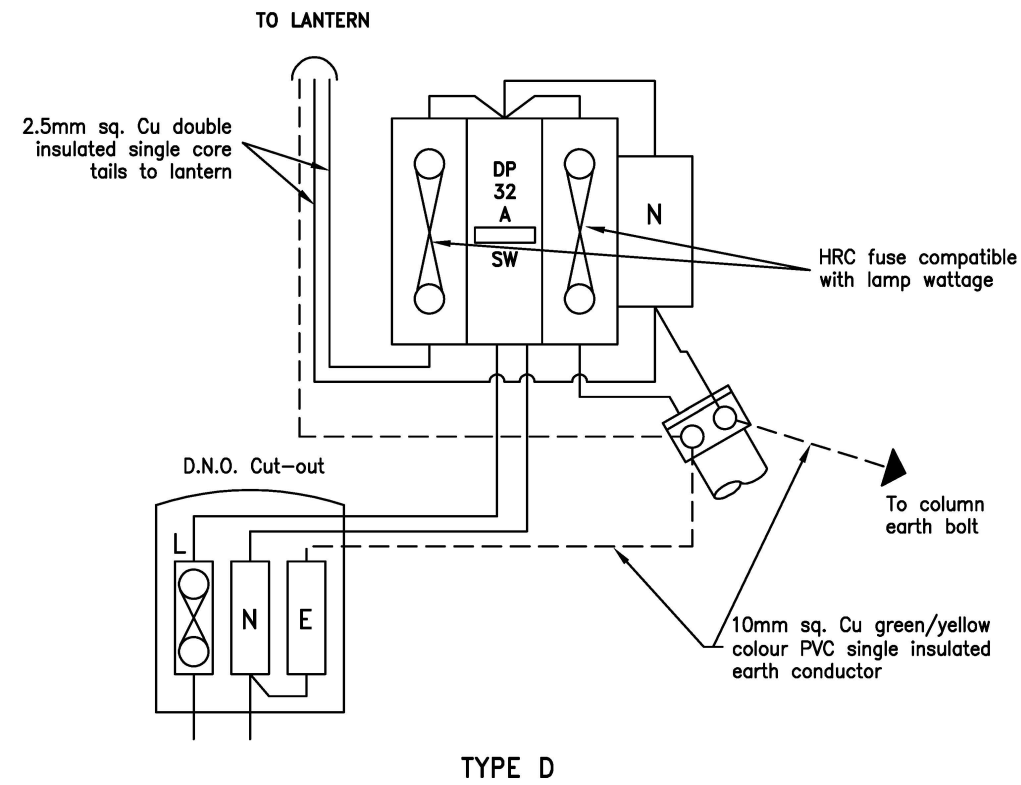
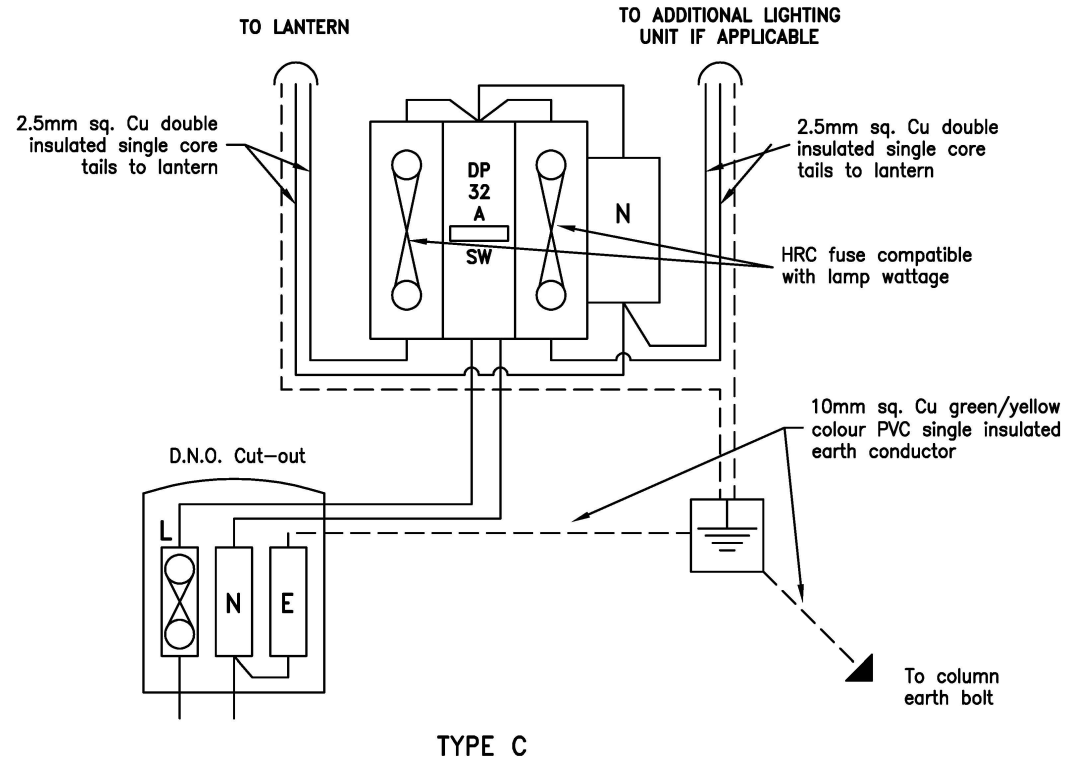


Drawing Number
SD/1400/04A

Notes

1. All electrical equipment must be to the approval of the Director.
2. Fuse discrimination must be applied.
3. Size of earth conductor from column earth bolt to door to be 4mm sq. copper 56/0.30 flexible cord PVC insulated colour code green/yellow.
4. Isolator to be phase identified.
5. All terminations to be made using crimped lugs or screw terminals as appropriate.
6. Outgoing fused cables to be labelled to indicate identification numbers or other items of electrical equipment it supplies.
7. All electrical equipment with a type D, G or H termination to be labelled with the letter F prefixing the number on the outside of the column.



Do not scale this drawing

A	APR 19	Updated title block	NR
Rev	Date		Checked

Project

STANDARD DRAWINGS

Title

TERMINATION TYPES
TYPE C & D (DNO SUPPLIES)

Drawing No.

SD/1400/04A

Scale NOT TO SCALE

Date Jun 13

Department of Place,
Planning & Regeneration

