

Executive Director:
People
Grainne Siggins

Assistant Director:
Children's Social Care
Sonia Johnson

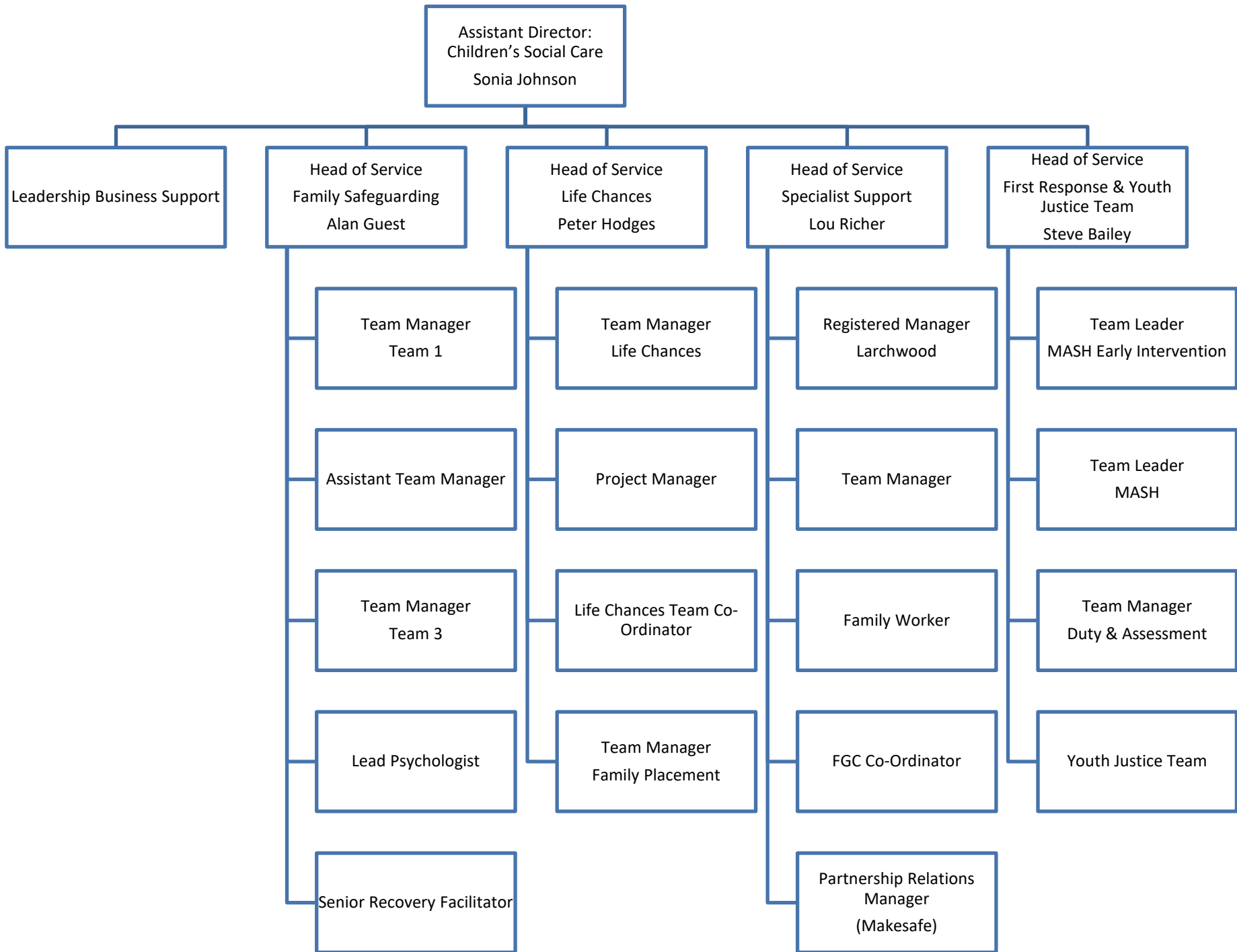
Assistant Director:
Learning &
Achievement
Cheryl Eyre

Assistant Director:
Adult Social Care
Melanie O'Rourke

Interim Assistant
Director:
Early Help &
Communities
Vacant

Assistant Director:
Commissioning
Thom Wilson

Tony Dwyer
Assistant Director:
Mental Health & Out of
Hours



Assistant Director: Learning & Achievement
Cheryl Eyre

Head of Standards
Zoe Livingstone

Head of School Property,
Places & Admissions
Noreen Zareef

Head of Safeguarding &
Inclusion
Debbie Smith

Business
Relationship
Manager
Richard Skegg

Head of SEND
Neil Hoskinson

Early Years' Service Lead
Cherry Hall

School Standards

School Standards

Community &
Continuing Ed

Learning Co-Ordinator

Finance Officer

Standards Support

Partnership
Development

Marketing Support
Officer

Governor Services
Officer

Quality &
Performance

School Standards

Centre Co-Ordinator

Education Property &
Contracts

School Admissions
Manager

SEND Officer

Quality Improvement
Manager

Senior IASS Officer

Early Years Bus &
Family

Senior IASS Officer

Early Years SEND &
Inclusion

