

# WELCOMING YOUR BUSINESS TO BRACKNELL FOREST

**BRACKNELL  
FOREST  
FOR BUSINESS.  
SIMPLY SMARTER.**



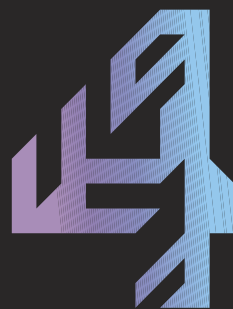
In partnership with





## 4 Arlington Square

Exceptional office space from 6,000 - 75,000 sq ft with  
purpose built opportunities available



ARLINGTON  
SQUARE

George Wilson  
T: 0118 206 5303  
[george.wilson@arlington.com](mailto:george.wilson@arlington.com)

Jeremy Rodale  
T: 020 7152 5429  
[jeremy.rodale@cushwake.com](mailto:jeremy.rodale@cushwake.com)

Edward Smith  
T: 020 7318 5136  
[edward.smith@realestate.bnpparibas](mailto:edward.smith@realestate.bnpparibas)

Arlington



A woman with dark curly hair and safety glasses, and a man with glasses and a beard, both wearing white lab coats, are looking at a green plant in a laboratory. The background shows a complex structure of pipes and metal beams.

# Growing together in Bracknell

**Syngenta is a leading agricultural technology company helping to improve global food security by enabling millions of farmers to make better use of available resources to sustainably feed a growing population.**

With a 90-year tradition of innovation and scientific excellence, Jealott's Hill is a key site in our global Research and Development network. Our collaborative approach helps deliver world-class solutions to our customers.

**[www.syngenta.com](http://www.syngenta.com)**

**syngenta**



## Investing in Bracknell

### Flexible industrial/warehouse units

A new vision for the Amen Corner Business Park area, adjacent to the established western industrial area of Bracknell.

Network West Phase 1 will look to provide 16 new industrial/warehouse units ranging in size from 3,810-57,404 sq ft available in Q4 2021. Phase 2 is available for bespoke design and build facilities up to 200,000 sq ft.

Suitable for alternative employment uses including datacentres and film production.

More information available through the joint marketing agents:



Melinda Cross 07748 267 748  
Shaun Rogerson 07970 304 392



Ben Wiley 07771 662 009  
Will Merrett 07342 949 657



**Planning Submitted**  
Allocated for industrial and warehouse uses



**Prime Location**  
0.8 miles from A329(M), access to M4 (3.7 miles) and M3 (6 miles)



**Labour**  
Growing town, large labour force available locally



**Infrastructure**  
Fully serviced site with access, power and utilities in place

[www.networkwest.co.uk](http://www.networkwest.co.uk)

A development by:

**Chancerygate**

**Hines**

**CREDIT SUISSE**

# BRACKNELL FOREST FOR BUSINESS

Supportive  
Responsive  
Dynamic  
Open  
Professional  
Listening  
Pro-active  
Business-friendly



Bracknell Forest . . . simply smarter



Published by: My Business Client Ltd  
Martinique House, Hampshire Road, Bordon,  
Hampshire GU35 0HJ  
Tel: 01420 477080  
Email: sales@mybusinessclient.com  
Web: www.mybusinessclient.com

Please note:

This publication is wholly or partially funded by the  
advertisers herein and the publisher. It is provided at  
no charge to the Council.

Our Advertisers:

We gratefully acknowledge the support of all the  
firms whose advertisements appear in these pages.  
Without their help we would not be able to produce  
this guide. As a reciprocal gesture we have pleasure  
in drawing the attention of our readers to their  
announcements, but wish to make it clear that  
Bracknell Forest Council can accept no responsibility  
for their products or services advertised.  
All adverts correct at time they were signed off.

# Partnerships that work

## **We are a local partner, dedicated to delivering highway services**

Self-delivery is core to our business model. Working together with our clients we deliver cyclic and reactive maintenance, incident response, severe weather operations, surfacing and specialist treatments with local accountability and by people who take pride in the services they deliver. We offer best practice maintenance services through local solutions to make a positive impact within the communities in which we operate.

## **We invest in local people and communities**

Supporting our clients, we take pride in offering a dedicated and flexible approach, underpinned by the recruitment, development and retention of a locally based workforce and supported by a close community of trusted supply-chain partners.

## **Please contact:**

[info@ringway.co.uk](mailto:info@ringway.co.uk) | 01344 355160

Commercial Centre, Old Bracknell Lane West, Bracknell, Berkshire, RG12 7QT

See below for a selection of our work activities, or talk to any of our team to find out more about what we do:

- **24hr emergency and reactive highways maintenance cover**
- **Improvement schemes**
- **Planned routine highways maintenance**
- **Winter maintenance**
- **Surface dressing**
- **Arboricultural services, including tree works and grass cutting**
- **Gully cleansing**
- **Street lighting repairs and maintenance**

# WELCOMING YOUR BUSINESS TO BRACKNELL FOREST

- 1 WELCOME.....7
- 2 A STRATEGIC LOCATION ..... 11
- 3 WHO'S HERE? ..... 12
- 4 BRACKNELL FOREST: THE SMARTER CHOICE.....14
- 5 QUALITY WORKING SPACES ..... 15
- 6 A BETTER QUALIFIED WORKFORCE .....16
- 7 A VIBRANT TOWN CENTRE ..... 17
- 8 AN ENVIABLE LIFESTYLE .....18
- 9 AN ACTIVE AND BUSINESS FRIENDLY COMMUNITY .....19
- 10 BRACKNELL BUSINESS IMPROVEMENT DISTRICT .....20
- 11 HOW THE COUNCIL CAN HELP YOU .....20
- 12 SUPPORT AVAILABLE FROM KEY STAKEHOLDERS.....22

# To Rent

High quality self-contained contemporary office space with excellent road links

800 – 3,000 sq ft



329 Bracknell provides small and medium-sized businesses with an exceptional working environment

Generous car parking ratio 1:195 sq ft

[329bracknell.com](http://329bracknell.com)

329  
BRACKNELL

Viewing & Further Information

Owned and Managed by



**McKay**  
Securities  
Plc

[mckaysecurities.plc.uk](http://mckaysecurities.plc.uk)



**Page  
Hardy  
Harris**  
**01344 311344**  
[pagehardyharris.co.uk](http://pagehardyharris.co.uk)

**Nick Hardy**

[nick@pagehardyharris.co.uk](mailto:nick@pagehardyharris.co.uk)

**Hannah Taylor-Brewin**

[hannah@pagehardyharris.co.uk](mailto:hannah@pagehardyharris.co.uk)



## 1 • WELCOME

**Councillor Marc Brunel-Walker**  
**Executive Member for Economic Development and Regeneration**

I am delighted to welcome you and your business to Bracknell Forest. Here, we pride ourselves on being one of the most business-friendly environments anywhere in Europe. Bracknell Forest is one of the best business locations in the country, at the heart of the Thames Valley – the UK's 'Silicon Valley'.

We are proud of our strong digital economy in the borough and can boast world-class companies such as 3M, Dell, Fujitsu, Micron, Panasonic, ON Semiconductor, Netgear and Hitachi. We offer a compelling package for senior executives and a first-class quality of life. Over 20 percent of the borough is recognised as being of high wildlife value, with 54 local wildlife sites and 10 local nature reserves. There are also several small historic towns and villages including Crowthorne, Sandhurst and Winkfield. A range of housing is available; and with London just an hour away, and Heathrow 45 minutes away, you will be able to combine the best of all worlds.

“Over the last ten years more than £750 million has been invested into Bracknell Forest by a range of key stakeholders including Bracknell Forest Council, Thames Valley Berkshire LEP, Bracknell Regeneration Partnership, central government, businesses and other close partners. These investments show how partnership working is embedded in Bracknell Forest's culture.

“Partners all recognise the importance of strategic investments to provide the best working and living environment for local people and businesses. Examples of these investments include major infrastructure improvements, building new schools, improvements to public spaces and improving current housing provision. A new joint venture partnership with a commercial development partner will unlock council owned sites in and around the town centre. A new Business Improvement District (BID) for the Southern and Western Industrial areas in Bracknell has been formed with a vision for the BID area to be recognised as the place where businesses develop and grow through collaboration and investment.

“The Lexicon, Bracknell's shopping and leisure destination has over one million sq. ft of shopping and leisure space with a wide range of places to socialise, making it a great place for your employees to visit. The Lexicon has been nationally recognised by industry experts winning three Revo Awards among other prestigious accolades since opening. The next phases of the town centre regeneration are well underway with the refurbishment of Princess Square shopping centre and the development The Deck - which will offer a vibrant community space and night-time economy. The continuing development of new homes in the town centre adds to the housing being delivered throughout Bracknell.

The Council has also recently implemented a new Climate Change Strategy to reduce carbon emissions and lead community action against climate change. A range of projects are underway, including the recently established food waste recycling scheme.

“We believe Bracknell Forest is the perfect environment for businesses to thrive. Don't just take our word for it; ask our well-established businesses who have made Bracknell Forest their home.”



Marc Brunel-Walker





part of Marston Holdings

# Proud to be supporting Bracknell Forest and the community

For more information, please contact [marketing@marstonholdings.co.uk](mailto:marketing@marstonholdings.co.uk)



Marston Holdings is a trading name of Marston (Holdings) Limited.

**REGISTERED OFFICE:**  
Rutland House, 8th Floor, 148 Edmund Street,  
Birmingham, B3 2JR

Registered in England & Wales: 04305487,  
VAT Registered: GB 795 9289 47

NSL, a Marston Holdings company, is proud to be supporting Bracknell Forest Council and the community through the provision of COVID-19 ambassadors. They are helping to keep the town centre as safe as possible during the pandemic.

Working in partnership with the council's management team, Environmental Health teams from the Public Protection Partnership and the Lexicon town centre management team, our ambassadors provide advice and support for local businesses on Covid-safe practices and ensure safe, socially distanced queuing in public spaces. We are also assisting the council with the management of four community Lateral Flow testing sites.



**Bob Collis**

**Chair of the Economic and Skill Development Partnership**

“Bracknell Forest is a great place for business. It has one of the strongest local economies in the Thames Valley region, being located close to London with excellent road and rail links to the capital and to the rest of the UK, as well as sitting within easy reach of international markets via Heathrow and Gatwick airports.

The borough’s dedicated business areas and new town centre, combined with easily accessible housing areas and green spaces make it a great place to work and live. The local authority’s business orientated approach to supporting and investing in the business community has encouraged many globally and nationally recognised businesses, as well as a substantial number of local companies to settle in the area. This has enabled Bracknell Forest to sustain its position as one of the most dynamic locations for companies to put down roots and to grow, whether a global corporate or locally grown SME.

The Economic and Skills Development Partnership (ESDP) provides a forum for local businesses to meet and exchange ideas. It acts as a business voice for Bracknell Forest; supporting infrastructure improvement schemes and bringing together experts in health and well-being, training and skills development.

The ESDP championed Bracknell Forest’s first Business Improvement District (BID), which it helped to establish in 2020, and is supporting initiatives across the borough to improve connectivity, reduce adverse environmental impacts and retain essential skills. We aim to ensure that Bracknell Forest continues to be successful, achieving sustained and balanced economic growth across all its business sectors.”

Bob Collis



# ATKINS

Member of the SNC-Lavalin Group

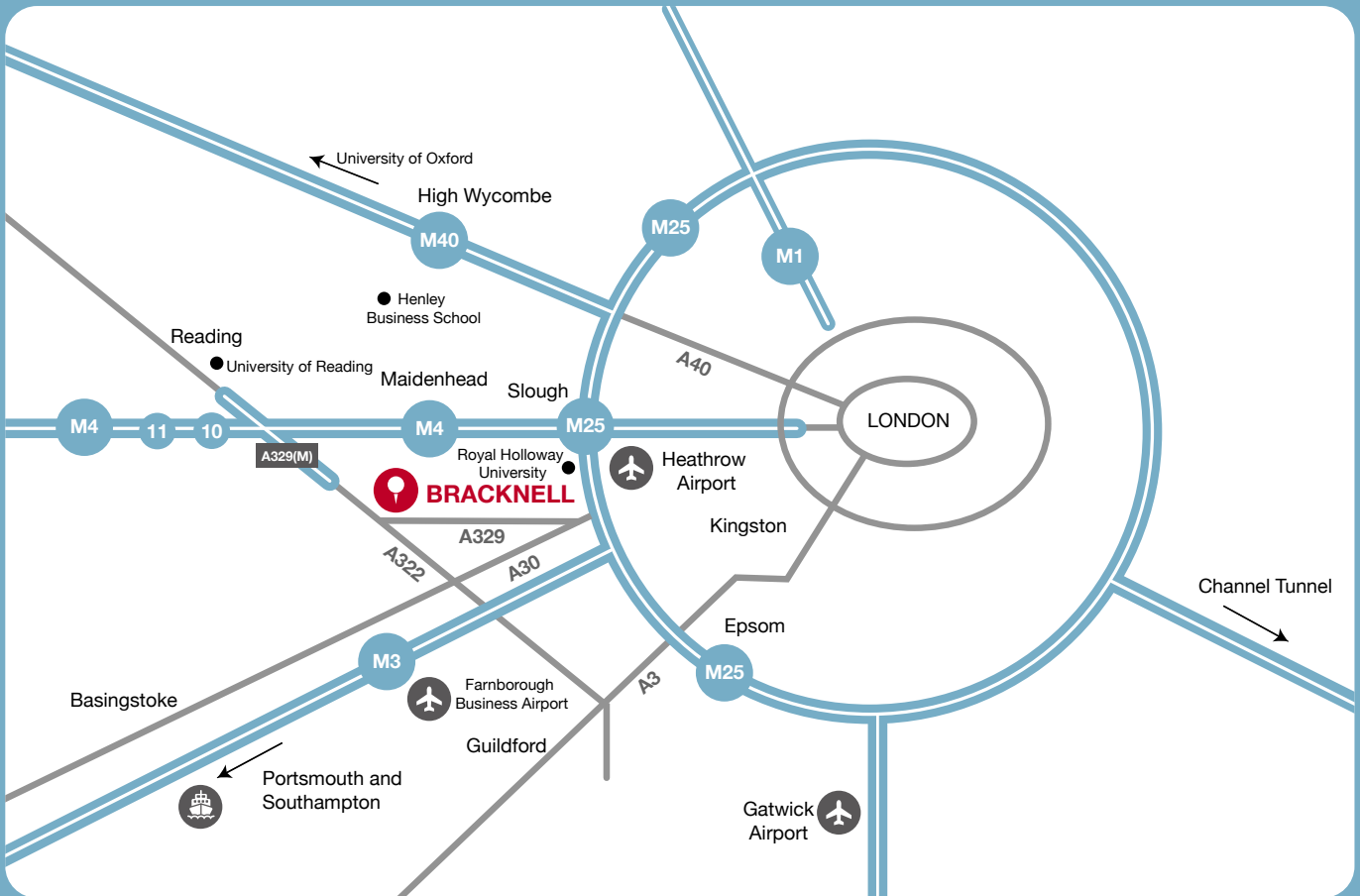


## Helping transform the Bracknell Forest region

For two decades now Atkins have been providing multi-disciplinary construction consultancy to Bracknell Forest Council, helping to innovate and future-proof their built environment while delivering improved social value.

Through our involvement we are helping to build improved facilities for the local community by supporting the delivery of sustainable infrastructure within schools, leisure centres, the corporate estate as well as social and residential projects, where we deliver excellence through our partnership and close affiliation to Bracknell and its people.

## 2 • A STRATEGIC LOCATION



Wish to travel into the heart of London? At peak times Bracknell offers four trains into London Waterloo taking only 62 minutes.



Bracknell Forest is only 19 miles away from London Heathrow Airport, with London Gatwick and Farnborough Business Airport also in close proximity.



Bracknell Forest is at the centre of the M3 / M4 corridor and no matter where you are in the borough you'll always be within six miles of one, if not both, of these major motorways.



"It isn't difficult to see why Bracknell is so popular with overseas companies looking to set up a European base or UK hub. It's right on the M3 and M4 motorways, has good rail links, is close to Heathrow and has cheaper overheads and costs compared to London. We have a fantastic alternative transport infrastructure here, enabling traffic free commuting by bike or foot along many purpose built paths. All this, and for a technology company, with the great access to staff and resources, Thames Valley is the place to be."

Mike Richardson, Managing Director - EMEA, Maximizer Software



### 3 • WHO'S HERE?



We have a proud history of international Agri-tech research at our Jealott s Hill site. The location, connectivity, and business environment in Bracknell and the wider Thames Valley ensures we can attract key science talent and build strong collaborations in academia and industry that are vital for us to fulfil our commitment to deliver innovation to support farmers around the globe in addressing the challenge of growing food safely, whilst taking care of the environment.

Jutta Boehmer, Head of Bioscience, Syngenta



Jutta Boehmer



## 4 • BRACKNELL FOREST: THE SMARTER CHOICE

<p>AMONG THE MOST PRODUCTIVE PLACES IN THE UK</p> 	<p>World-leading companies based in Bracknell Forest <b>Waitrose, Dell, Honda, Boehringer Ingelheim, Fujitsu, Vodafone and 3M</b></p>	<p>EASY ACCESS TO M3 / M4 MOTORWAYS</p> 
<p>PROXIMITY TO LONDON AND LONDON HEATHROW AIRPORT</p> 	<p>VALUE FOR MONEY ON COMMERCIAL PROPERTY</p> 	<p>BRAND NEW TOWN CENTRE</p> 
<p>FANTASTIC LEISURE FACILITIES</p> 	<p>BEAUTIFUL SURROUNDINGS</p> 	<p>A RANGE OF AFFORDABLE AND EXECUTIVE HOUSING</p> 

Bracknell Forest Council and a wide range of partners are committed to making the borough one of the most business friendly places in Europe. We have the right people, the right accommodation and peerless connectivity making Bracknell Forest the smarter choice for business.

Located in the heart of the Thames Valley – the ‘Silicon Valley’ of Europe which has been ranked number one in the UK for Foreign Direct Investment (FDI) outside of London for several years (DIT, 2019) and only second to London in the UK for productivity (ONS, 2019).

Bracknell Forest has attracted international investment from North American, German, French, Dutch and Japanese businesses which have become established in the borough and have built strong supply chains.

By choosing to locate into Bracknell Forest, your business will be at the heart of the knowledge economy and able to connect with some of the most innovative digital industries in the world, including Dell, Micron, ON semiconductors, Hitachi, 3M, Panasonic, Fujitsu, Solera, Vodafone and Netgear.

“The location of Boehringer Ingelheim’s UK and Ireland headquarters in Bracknell allows us to hire the best and brightest talent from across South East England. We also benefit from excellent travel infrastructure, as well as being close to the golden triangle of elite medical research centres of Oxford, Cambridge and London. Bracknell’s significant town centre regeneration, along with these factors, makes it a fantastic place to do business.”

Sabine Nikolaus,  
Country Managing Director and Head of Human Pharma, Boehringer Ingelheim UK and Ireland



Sabine Nikolaus







## 5 • QUALITY WORKING SPACES

Bracknell Forest is a borough of opportunity and a place of growth. Start-up businesses are encouraged to begin their journey here and established businesses are given the room to grow. A wide range of commercial space is available, much of it to Grade A standard, which means we can respond to the needs of existing and future business tenants.

Bracknell Forest is where location and value for money meet. Office space in the borough is priced significantly lower than comparative premises in neighbouring towns such as Reading. This has been a deciding factor for many businesses choosing to move here.

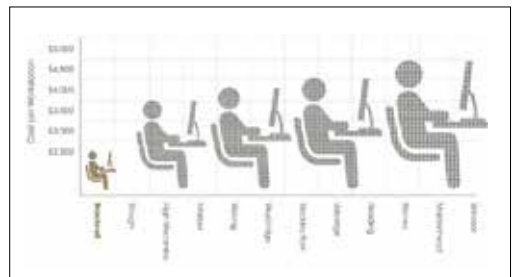
Much of the available commercial space is located in business parks such as Arlington Square and the Southern Business Area. Arlington Square can offer space from 100 sq ft to 75,000 sq ft, with the option for purpose built premises and the Southern Business Area is home to national and international businesses such as Waitrose and Boehringer Ingelheim.

“In addition, leading industrial developer SEGRO is investing substantially in the area with the development of SEGRO Park, Bracknell.

A premium industrial park which has already attracted Big Yellow Self Storage to buy land, Midwich to establish their new regional facility in 31,000 sq ft and Bond International to take 90,000 sq ft for distribution. An option up to 178,000 sq ft is still available”

A joint venture between Chancerygate, Hines and Credit Suisse has acquired the 23 acre Hewlett Packard HQ site to develop a 350,000sq.ft business park. The proposed business park will be promoted for industrial, warehousing and logistics purposes, as well as bespoke data centre facilities.

One of Bracknell Forest’s strengths is its business friendliness and can-do attitude. Thanks to a forward-thinking council and welcoming commercial agents, you can count on the help and advice you need.



“Bracknell Forest has a unique position within the Thames Valley, being part of both the M3 and M4 corridors. It benefits from excellent value commercial space, a skilled workforce and good transport links. Now with the new Lexicon development established, Bracknell is one of the best locations for business in the Thames Valley.”



Nick Hardy, Page Hardy Harris Ltd

“Bracknell sits at the centre of the Thames Valley. Companies can enjoy the benefits of access to world class shopping, excellent transport links, affordable office space and most importantly of all, the availability of staff. A great place to be located.”



Matthew Battle, UK Property Forums

“The borough has high quality and quantity of office space, relatively low rents, frequent trains direct into Waterloo, good availability of car parking and sound road infrastructure. Bracknell Forest is truly a great place for business.”



Simon Fryer, Fryer Commercial Ltd

## 6 • A BETTER QUALIFIED WORKFORCE

You'll go a long way to find a workforce better suited for your business: Over 42 per cent of Bracknell Forest residents are graduates, higher than the national average of 39.3 per cent, and are amongst the most economically active in the UK at 86.7 per cent, compared with the national average of 78.9 per cent. Also 54.1 per cent of residents are managers, directors and senior officials, professional occupations or associate professional and technical staff, up by almost 5% from the previous year (Office of National Statistics).

Much of this talent has been drawn from our nearby universities, including Reading and London Royal Holloway. Oxford University and Oxford Brookes University are each an hour away. The University of Reading is nearest and was ranked in the top 200 of the world's universities in 2018 according to the QS World University Rankings 2019, and is home to the Henley Business School. A fifth of Bracknell's graduates stay in the general area to pursue their careers.

Some of the country's best private education is within easy reach. As well as Eton, probably Britain's best-known school, just half an hour away, Bracknell Forest is home to Wellington College which has sister schools in Tianjin and Shanghai. Many more outstanding private schools are available in and around the borough.

Within the borough itself there are 30 primary schools, seven secondary schools, one special school and one pupil referral unit, a further education college (Bracknell and Wokingham College), a nationally renowned independent day and boarding school (Wellington College) and one higher education college (Newbold College). These institutions promote high achievement to their students and wherever possible align teaching to the needs of the local businesses.

**BRACKNELL  
FOREST  
FOR BUSINESS.  
SIMPLY SMARTER.**

"Businesses moving to Bracknell will find a network eager to understand their skills requirements, and work in partnership to find innovative solutions that links talent to business."

Paul Newman, Executive Director and Regional Lead for Berkshire, Activate Learning

## 7 • A VIBRANT TOWN CENTRE

The redevelopment of Bracknell town centre has delivered a new social hub and source of pride for the local community. Since its launch in 2017, The Lexicon has become a regional destination, attracting visitors from a wide catchment area.

Anchored by a two story M&S, a Fenwick department store and a 12 screen 4DX Cineworld, The Lexicon offers more than 85 shops and restaurants, with 3,000 centrally located car park spaces.

The £240m regeneration project was complemented by more than £14m of highway and transport improvements and £5.5million of environmental improvements prior to launch.

The first class shopping experience is reflected in the industry awards won since opening;

- RTPI South East Awards for Planning Excellence 2018 – commendation for within the successful economy category (2018)
- REVO Purple Apple Marketing Awards 2018 – Strategic Marketing ‘Winning Back Local Hearts and Minds’ (Mar 2018)
- Thames Valley Property Awards 2018 – Development of the Year (Mar 2018)
- iESE Transformation Best of the Best Award (Mar 2018)
- iESE Transformation Gold Award, Community Regeneration Category (Mar 2018)
- REVO 2017 Best of the Best Award (Dec 2017)
- REVO 2017 Re:new Award (Dec 2017)

The success of the town centre led to The Lexicon reaching 26th position in the Trevor Wood Associates report, a rise of 8 places in GlobalData’s Top 50 UK Shopping Centres to number 37 and the CACI Retail Footprint confirms that The Lexicon has jumped 277 places to 157 since 2017. In addition, fDi’s European Cities and Regions of the Future 2020/21 ranked Bracknell as 10th in the small European cities rankings.



## 8 • AN ENVIABLE LIFESTYLE

Bracknell Forest is more than just a great place to work and do business. It's a brilliant place to live too.

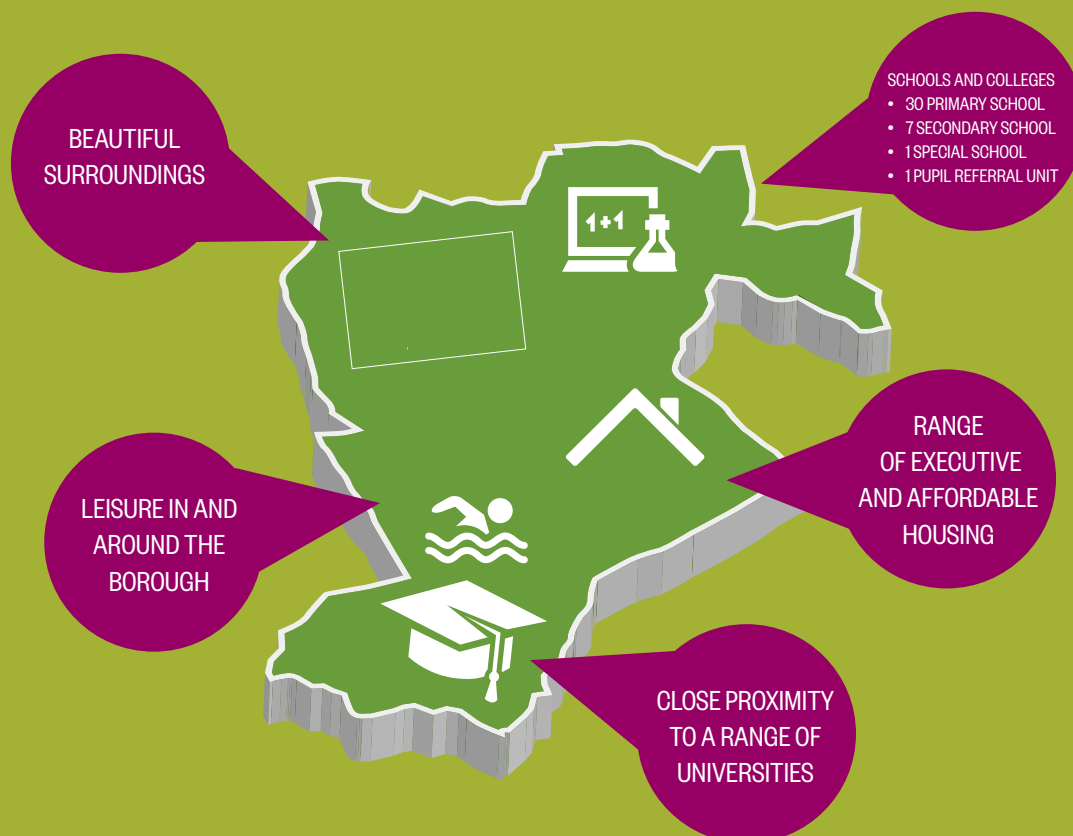
Set in desirable countryside yet on the fringes of London, Bracknell Forest embraces small, historic towns and villages including Crowthorne, Sandhurst and Winkfield, all of which offer a superb choice of modern and traditional homes.

The area enjoys an excellent choice of good quality restaurants suitable for business clients or family meals, along with some great pubs – over 30 of which serve real ales. No fewer than eight Michelin restaurants are close by – Tom Kerridge's two star Hand and Flowers is half an hour away and Heston Blumenthal's Fat Duck (awarded three Michelin stars and voted Best Restaurant in the World) is even closer.

More active pursuits can be enjoyed in many of the borough's leisure facilities which include water parks, adventure playgrounds, golf clubs, mountain biking, forestry trails and leisure centres suitable for a range of ages.

Within the surrounding area there are a number of world-class attractions such as Windsor Great Park, Windsor Castle and LEGOLAND. Ascot Racecourse is on the doorstep with Wentworth Golf Club a mere eight miles away.

Perhaps unsurprisingly, according to PWC, Bracknell with Reading was ranked at the top of the index for health and the second best place for "most improved city region in the UK just after Oxford in 2019. The ranking took into account a range of factors including jobs, health, income and skills, work-life balance, housing affordability, travel to work times, income equality and pollution.





## 9 • AN ACTIVE AND BUSINESS-FRIENDLY COMMUNITY

Bracknell Forest Council's business support team is tasked with ensuring that the borough sustains its place as a preferred destination for business. The team works to enable the best conditions for businesses of all sizes to succeed, generate wealth, and help the local economy thrive. We do this by:

- supporting existing businesses
- promoting inward investment
- fostering local enterprise
- ensuring the skills of Bracknell Forest residents are aligned to the needs of Bracknell Forest employers
- improving the infrastructure, making it easier to get around

"As a long term resident, Fujitsu continue to enjoy the benefits of operating out of Bracknell and are actively engaged in the Bracknell Business Improvement District which went live as of 1st April 2020"

Maria Sabey Head of Property UK&I



"There are excellent support networks for businesses in this area. As the local Growth Hub for Berkshire, we work closely with Bracknell Forest Council and the local business community to ensure business owners have access to the latest private and public sector support, finance providers, industry experts, specialist programmes and an array of business events to help them grow and achieve their ambitions."

Peter Fleming, Growth Hub Manager, Thames Valley Berkshire Business Growth Hub

## 10 • BRACKNELL BUSINESS IMPROVEMENT DISTRICT

From 2018 the council supported a group of local businesses from the western and so business areas in setting up the first Business Improvement District in Bracknell Forest

Business Improvement Districts are driven by participating businesses who work together to draw up a business plan which is voted on and, if agreed, is then funded through a levy based on business rateable values, as well as trying to lever in additional funding where possible for investment into the delivery of projects for the benefit of businesses.

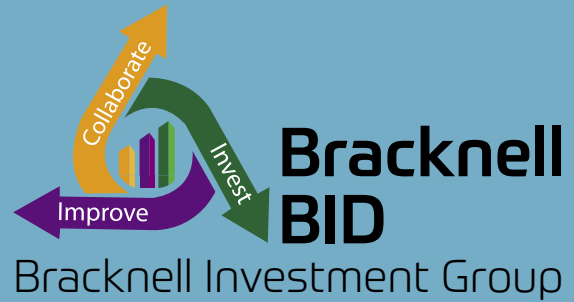
The Bracknell BID achieved its “yes vote” in October 2019 securing a collective fund of over £3m to be spent over five years. The BID commenced work officially in April 2020 and will use the fund to deliver their ambitious and exciting business plan focusing on infrastructure and business development.

The council is working in partnership with the BID to support them with the delivery of their business plan over the coming years to improve the business areas and foster further business growth and development in Bracknell Forest.

To learn more about the work of the Bracknell BID visit <https://www.bracknellbid.co.uk/> Or contact the BID team here:

Email: [enquiries@bracknellbid.co.uk](mailto:enquiries@bracknellbid.co.uk)

Tel: 01344 949080



## 11 • HOW THE COUNCIL CAN HELP YOU

Bracknell Forest Council provides a wide range of services for businesses in the borough. Our aim is to support the borough’s people and environment whilst maintaining and strengthening our vibrant business community.

### LICENSING

Our licensing team is responsible for issuing permits and licences, many of which are essential to the legal operation of certain types of businesses such as hairdressers, taxis, food businesses, pubs, clubs and bars. If you think you may need to apply for a permit or licence, please visit our web pages and if you do find the information you require email us at [licensing@bracknell-forest.gov.uk](mailto:licensing@bracknell-forest.gov.uk) and we will put you in contact with the correct staff member to assist your enquiry.

If you’re planning an event, we’ve teamed up with the local police, fire and ambulance services to form a Safety Advisory Group, to provide relevant advice and guidance.

Web: [www.bracknell-forest.gov.uk/licencesandstreettrading](http://www.bracknell-forest.gov.uk/licencesandstreettrading) and [www.bracknell-forest.gov.uk/licensing/planning-event-bracknell-forest/bracknell-forest-safety-advisory-group](http://www.bracknell-forest.gov.uk/licensing/planning-event-bracknell-forest/bracknell-forest-safety-advisory-group)

### ENVIRONMENTAL HEALTH AND SAFETY

If you’re planning to open a new food business or outlet in Bracknell Forest, you will need to register with our environmental health team. The environmental health team is also responsible for enforcing environmental protection and food laws and investigating cases of food poisoning and accidents on commercial premises. There’s lots of information on our website about the environmental health and safety regulations that might affect your business.

Web: [www.bracknell-forest.gov.uk/environmentalhealth](http://www.bracknell-forest.gov.uk/environmentalhealth)



## PLANNING

We're keen to encourage the continuing improvement of the area, so we take a positive and proactive approach to planning. If you're considering building new premises, changing the use of existing premises or even displaying advertisements, please contact our planning team as soon as possible to discuss what you've got in mind. For information on whether planning permission or advertisement consent is required please use the pre-application service, details of which can be found at the below link:

Web: [www.bracknell-forest.gov.uk/planning-and-building-control/planning/planning-advice-services](http://www.bracknell-forest.gov.uk/planning-and-building-control/planning/planning-advice-services)

## BUILDING CONTROL



Building control focuses on ensuring that buildings are constructed in a safe and stable way, comply with energy efficiency requirements, have suitable access and facilities and do not pose safety risks for users. We offer building control consultancy services on a commercial basis, including pre-application advice, plan-checking and site inspections. We provide these services through Bracknell Forest Building Control, which is part of Local Authority Building Control (LABC), a nationwide network of 3,500 building control surveyors.

Web: <https://www.bracknell-forest.gov.uk/planning-and-building-control/building-control/building-control-commercial-services>

## COMMERCIAL PROPERTY AVAILABLE

The council owns, manages and lets out a number of light industrial units, small business units and neighbourhood shops around the borough. Please check the website for details of what's currently available.

Web: [www.bracknell-forest.gov.uk/commercialproperty](http://www.bracknell-forest.gov.uk/commercialproperty)

Please call our reception on 01344 352000 between 8.30am and 5pm and ask to speak to the relevant team. You can find more information about our services for businesses at [www.bracknell-forest.gov.uk/business](http://www.bracknell-forest.gov.uk/business).

## ECONOMIC RECOVERY



A COVID 19 Community Impact Assessment in late 2020 identified how the pandemic has affected businesses and residents. Bracknell Forest Council are working with partners such as the Thames Valley Local Enterprise Partnership and Thames Valley Chamber of Commerce to focus on economic renewal.

Activities to retain and attract businesses in the area have continued and remain a priority. These include ongoing regeneration projects such as a new leisure and community space, known as the Deck (The Lexicon).

The Council's Outbreak Control Plan aims to reduce the risk of further restrictions, keep residents safe and businesses open.

For further and up-to date information and support visit:

<https://www.bracknell-forest.gov.uk/coronavirus-information-and-support>

## 12 • SUPPORT AVAILABLE FROM KEY STAKEHOLDERS

Bracknell Forest has a strong tradition of successful partnerships. By coming together to share their knowledge and expertise, and to pool resources, organisations of all sizes and sectors are supporting the area's economic prosperity and vibrancy.

### THAMES VALLEY BERKSHIRE LEP

Thames Valley Berkshire LEP is a business led body, working to maintain the status of the area as the most productive in the UK, outside of London. It comprises of key leaders across the business, education, voluntary and community sectors, and six unitary authority areas of: Bracknell Forest, Reading, Slough, West Berkshire, Windsor & Maidenhead and Wokingham.

The LEP's role is to develop strategies; allocate funding – to help implement those strategies; convene partners; and advocate for Berkshire. The LEP has so far invested over £194 million of Local Growth, Growing Places and Business Rates Retention Funds. The European Structural & Investment Funds (ESIF) Strategy for Thames Valley Berkshire will also see investment of £26.4m.

The LEP has done much to enhance the local business environment: it has established a Business Growth Hub, including a dedicated portal to help scaling business access support; invested £11.3m into a bespoke Funding Escalator for high-growth potential SMEs and enabled the investment of European funds to accelerate the opening of the new Thames Valley Science Park. Through ERDF, the LEP has also enabled the Low Carbon Workspaces project providing grants to assist SMEs to make energy efficiency changes and cost reduction to their business premises or processes. The LEP also enables co-funding support for SMEs to prepare for international trade.

Web: [www.thamesvalleyberkshire.co.uk](http://www.thamesvalleyberkshire.co.uk)



### THAMES VALLEY CHAMBER OF COMMERCE GROUP

Thames Valley Chamber of Commerce Group helps businesses reach their potential, working with sole traders, SME's and multi-nationals across Berkshire, Buckinghamshire, Oxfordshire and Swindon. Membership brings with it a wide range of benefits, from networking opportunities, business support, access to a number of discounted products and services, lobbying of local and national Government and help with developing international trade.

The Thames Valley Chamber is one of the largest accredited by the British Chambers of Commerce (BCC) in the UK and comprises of seven local chambers across the region. The Bracknell Chamber of Commerce works closely with Bracknell Forest Council and the Bracknell Regeneration Partnership, representing the interests of local businesses.

Web: [www.thamesvalleychamber.co.uk](http://www.thamesvalleychamber.co.uk)

Tel: 01753 870500



### ECONOMIC AND SKILLS DEVELOPMENT PARTNERSHIP

Unlike elsewhere in the Thames Valley, Bracknell Forest has an established and unique business-led forum, the Economic and Skills Development Partnership (ESDP), which provides an independent voice for all businesses in the borough. The purpose of the ESDP is to facilitate and promote the continued economic development and growth of Bracknell Forest. The Partnership brings together representatives from the private, public and education sectors;

working on their behalf to bring about improvements to the local business environment. The Partnership is always looking to increase its membership and for people to get involved in its work. If this is of interest or you would like to learn more, please contact the regeneration and economy team – [economic.development@bracknell-forest.gov.uk](mailto:economic.development@bracknell-forest.gov.uk)

working on their behalf to bring about improvements to the local business environment. The Partnership is always looking to increase its membership and for people to get involved in its work. If this is of interest or you would like to learn more, please contact the regeneration and economy team – [economic.development@bracknell-forest.gov.uk](mailto:economic.development@bracknell-forest.gov.uk)





#### THAMES VALLEY BERKSHIRE FUNDING ESCALATOR

The LEP has committed £11.3 million of Growing Places Funds to create the Thames Valley Berkshire Funding Escalator providing loans and equity across three funding initiatives managed by The FSE Group. If you are an ambitious SME based in Berkshire with the potential to deliver high growth and employment opportunities, you may be eligible to apply.

Web: [www.thefseggroup.com/thames-valley-berkshire-funding-escalator/](http://www.thefseggroup.com/thames-valley-berkshire-funding-escalator/)  
Tel: 01276 608517



#### THAMES VALLEY BERKSHIRE BUSINESS GROWTH HUB

The Thames Valley Berkshire Business Growth Hub is funded by the Thames Valley Berkshire LEP to help ambitious entrepreneurs to grow their business. It offers free, impartial business advice and support services for small-to-medium sized businesses in Berkshire. Whether you need advice on starting your business or you are an established business looking to grow, access funding, break into overseas markets, restructure, expand your team or simply need advice on a specific business challenge, such as Net Zero, it can help.

Web: [www.berkshirebusinesshub.co.uk](http://www.berkshirebusinesshub.co.uk)  
Tel: 0118 209 0000



If you need this in an alternative format please contact Bracknell Forest for Business on 01344 352518.

# SEGRO PARK BRACKNELL

SOUTHERN INDUSTRIAL ESTATE



## MADE SIMPLE BY DESIGN

SEGRO Park Bracknell offers flexible Design & Build opportunities from 28,847 sq ft to 178,811 sq ft, deliverable within 12 months. So if you're looking for a high quality industrial / logistics facility suitable for either B1(c), B2 and B8 distribution, HQ or data centre use, then look no further.

Whatever your requirements, the decisions are simple by design.

### FOR FURTHER INFORMATION:

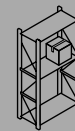


Sam Vyas  
E sam.vyas@avisonyoung.com  
T 020 7911 2267  
M 07962 362 708



Philip Hunter  
E phunter@lsh.co.uk  
T 0118 960 6911  
M 07711 234 374

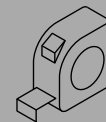
[SEGRO.COM/PARKBRACKNELL](https://www.segro.com/parkbracknell)



UP TO 18M  
CLEAR EAVES  
HEIGHT



UP TO 50kN/m<sup>2</sup>  
FLOOR LOADING



UP TO 50M  
SECURE YARD



BREEAM  
'VERY GOOD'

**SEGRO**  
100 YEARS OF THE EXTRAORDINARY



Buckler's Park

Committed to making a **positive contribution**

**A new community** of award-winning homes in Crowthorne.

Dedicated to enhancing the lives of our customers while contributing positively to the local community.



Buckler's Park, Old Wokingham Road,  
Crowthorne, Berkshire RG45 6LL



# WOODHURST PARK

WARFIELD | BERKSHIRE

## A natural vision coming to life



### Welcome to Woodhurst Park

A collection of beautiful homes set within a mature country park  
where community is at the heart of everything

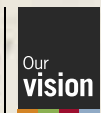
Discover the collection of 1 & 2 bedroom apartments and 2, 3, 4 & 5 bedroom houses offering stylish living spaces, a first class specification and exceptional customer service

Woodhurst Park is set within 65 acres of picturesque open space including a Country Park, the tranquil Riverside Cut and a number of natural trails

1 & 2 bedroom apartments from £270,000  
2, 3 & 4 bedroom houses £400,000

01344 981691 | [woodhurstpark@berkeleygroup.co.uk](mailto:woodhurstpark@berkeleygroup.co.uk)  
[www.woodhurstpark.co.uk](http://www.woodhurstpark.co.uk)

Sales & Marketing Suite open by appointment only  
Harvest Ride, Warfield, Berkshire RG42 5AB



Proud to be a member of the Berkeley Group of companies



Backed by  
HM Government

# Berkeley

Designed for life



# Bracknell Forest Cambium Partnership

Countryside and Bracknell Forest Council are proud to announce their new joint venture, Bracknell Forest Cambium Partnership.

Our aim is to support the ongoing development of Bracknell Forest, building high quality neighbourhoods that serve the needs of residents and businesses.

[www.cambiumpartnership.com](http://www.cambiumpartnership.com)



Binfield | Warfield | Wokingham

## Discover new homes in Berkshire

Discover our selection of spacious and modern 2-, 3-, 4- & 5-bedroom homes across Berkshire available with our great choice of moving schemes.

Contact us to find out how we can get you moving.

[lindenhomes.co.uk](http://lindenhomes.co.uk)

**Blue Mountain** Binfield RG42 4EX  
**01344 798 760**

**Archfield** Warfield RG42 6AA  
**01344 932 129**

**Copsewood** Wokingham RG41 1AR  
**01189 117 497**



Photograph shows typical Linden homes. Details correct at time of going to press.

2019393



IT'S  
THE WAY  
YOU  
MOVE

GET MOVING  
WITH HELP TO BUY  
TO THE FAIRWAYS,  
BINFIELD.

With a 5% deposit with Help to Buy,\* you could move to a brand new 2, 3 or 4 bedroom home.

Get in touch today **01344 981656**



[bloorhomes.com](http://bloorhomes.com)



Backed by  
HM Government

\*Help to Buy and all Bloor Homes' incentives and schemes are subject to terms and conditions and are available on selected developments and selected plots only. Help to Buy is only available on developments in England, up to the value of £600,000 subject to contract, status and eligibility. Help to Buy is not available with Home Exchange. Prices and availability correct at time of going to press. Images shown for illustrative purposes only.

2019313



## We are Boehringer Ingelheim – a different kind of pharmaceutical company



Family-owned. Purpose-led.  
Innovation-driven.  
We serve mankind by  
improving health  
for people and animals.

We focus on:

**Scientific innovation** –  
we take on the biggest challenges  
in medicine.

**Sustainable healthcare** –  
we plan for the long term  
alongside the NHS.

**Digital transformation** –  
we invest in technology to accelerate  
healthcare improvements.



Carbon  
Neutral  
Organisation

Boehringer Ingelheim UKIE Ltd  
is a certified carbon neutral  
organisation.

2019348




## Fascination Fuels the Next Generation

A whole new generation is  
on the rise — to help us  
think, rethink and push the  
boundaries of what's possible.  
Not only are we helping to  
make their world more  
interesting, we're also setting  
the stage to make it better.

[micron.com](http://micron.com)

© 2021 Micron Technology, Inc. All rights reserved. Micron, the Micron logo, and Intelligence Accelerated are trademarks of Micron Technology, Inc. All other trademarks are the property of their respective owners.



# ONE Lexicon

Charles Square, Bracknell G1 1L

## Uniquely located 6-storey town centre building

Available as a whole or floor by floor

From 2,400 sq ft 21,730 sq ft



One Lexicon is located within Bracknell Town Centre benefiting from access to a large number of amenities and services. The property can be easily accessed by car or rail.

The building has undergone extensive refurbishment works and now provides the following specification:

- The Landlord has completed an extensive £3.5m refurbishment of the whole building, which is available for occupation immediately
- Air conditioning
- LED lighting
- Exposed Services
- WCs on each floor
- 2 x 10 person passenger lifts
- Excellent car parking provision

[www.one-lexicon-bracknell.co.uk](http://www.one-lexicon-bracknell.co.uk)



**Kate Clark**  
+44 (0)208 283 2535  
Kate.Clark@eu.jll.com



**Nick Hardy**  
+44 (0)7715 032429  
nick@pagehardyharris.co.uk

**Hannah Taylor-Brewin**  
+44 (0)7833 509532  
hannah@pagehardyharris.co.uk

6128

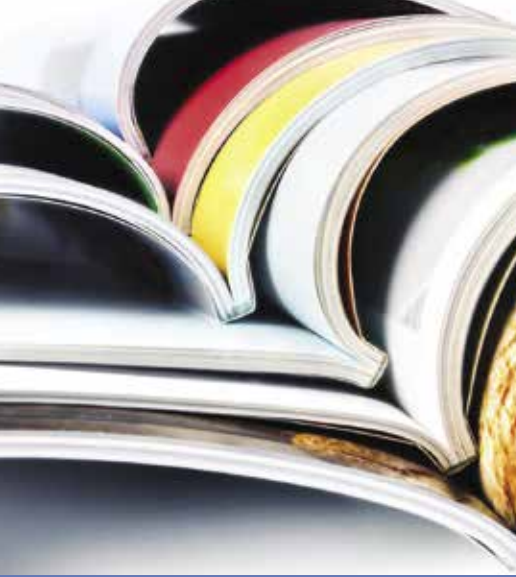
# Energy saving

A chiller door left open for 30 minutes a day wastes enough energy in a year to power a lighthouse for nearly 4 days.

Saving energy saves you money, protects your reputation and helps combat climate change.

Your organisation could save up to 10% through housekeeping actions which cost little or nothing.

Source: [www.carbontrust.co.uk](http://www.carbontrust.co.uk)



DESIGN. ADVERTISING. PRINT. DATABASE. ITS LOCAL



At My Business Client Ltd we've been helping our clients publish with confidence with our years of experience.

With decades of experience in print, internet, data and advertising services, we are able to deliver exceptional standards of design technology, project management and customer service.

We offer a range of exciting, fully-funded publishing and marketing services to major public and private organisations throughout the UK primarily government bodies, local authorities, NHS Trusts and trade associations.

Our comprehensive service encompasses all elements of printed and electronic publishing. We provide a wide range of services including design and print, data management, advertising sales, market research, website design and production, software development and sponsorship.

WORKING WITH  
LOCAL AUTHORITIES,  
BUSINESS IMPROVEMENT  
DISTRICTS AND LOCAL  
ENTERPRISE PARTNERSHIPS

✉ sales@mybusinessclient.com    💬 01420 477080    🌐 www.mybusinessclient.com



# IT'S LOCAL BRACKNELL FOREST ONLINE BUSINESS DIRECTORY

Bracknell Forest Council is proud to be part of launching an exciting new service for businesses in Bracknell Forest, connecting local businesses with local customers, free of charge and keeping trade inside the local economy.



 /bracknellforestcouncil

 /BracknellForest

[www.bracknell-forest.gov.uk](http://www.bracknell-forest.gov.uk)

'It's Local' is an online business directory, built for today's mobile generation, that accompanies this Bracknell Forest Business Guide.

At [itslocalbracknellforest.co.uk](http://itslocalbracknellforest.co.uk) you can find business services by keyword or company name. It is fully integrated with Google maps, directions and Streetview and includes direct links to businesses' websites and social media including Facebook, Twitter, LinkedIn and YouTube.

'It's Local' is a business directory for businesses and people who live in, work in and visit Bracknell Forest.

There's no download or install to worry about. The service is dynamic, sending device-appropriate pages to mobiles, tablets, laptops, desktops and Smart TVs.

Scan the QR CODE above to connect you to [itslocalbracknellforest.co.uk](http://itslocalbracknellforest.co.uk).

-  Market your business for FREE!
-  Search for local companies
-  Shop Local and support the Bracknell Forest economy!

Register your business at  
[www.itslocalbracknellforest.co.uk](http://www.itslocalbracknellforest.co.uk)  
and click on the  
Add Company link.  
**It's FREE!**

Notes:

'its local Bracknell Forest' is compatible with most web browsers, including Google Chrome, Firefox and Microsoft Internet Explorer (version 9 and above).

