

For more information
 Bluebell Hill,
 Edmund's Green,
 Longhill Park,
 The Chestnuts and
 Whitegrove Copse
 can be found in
 our parks to visit
 directory:

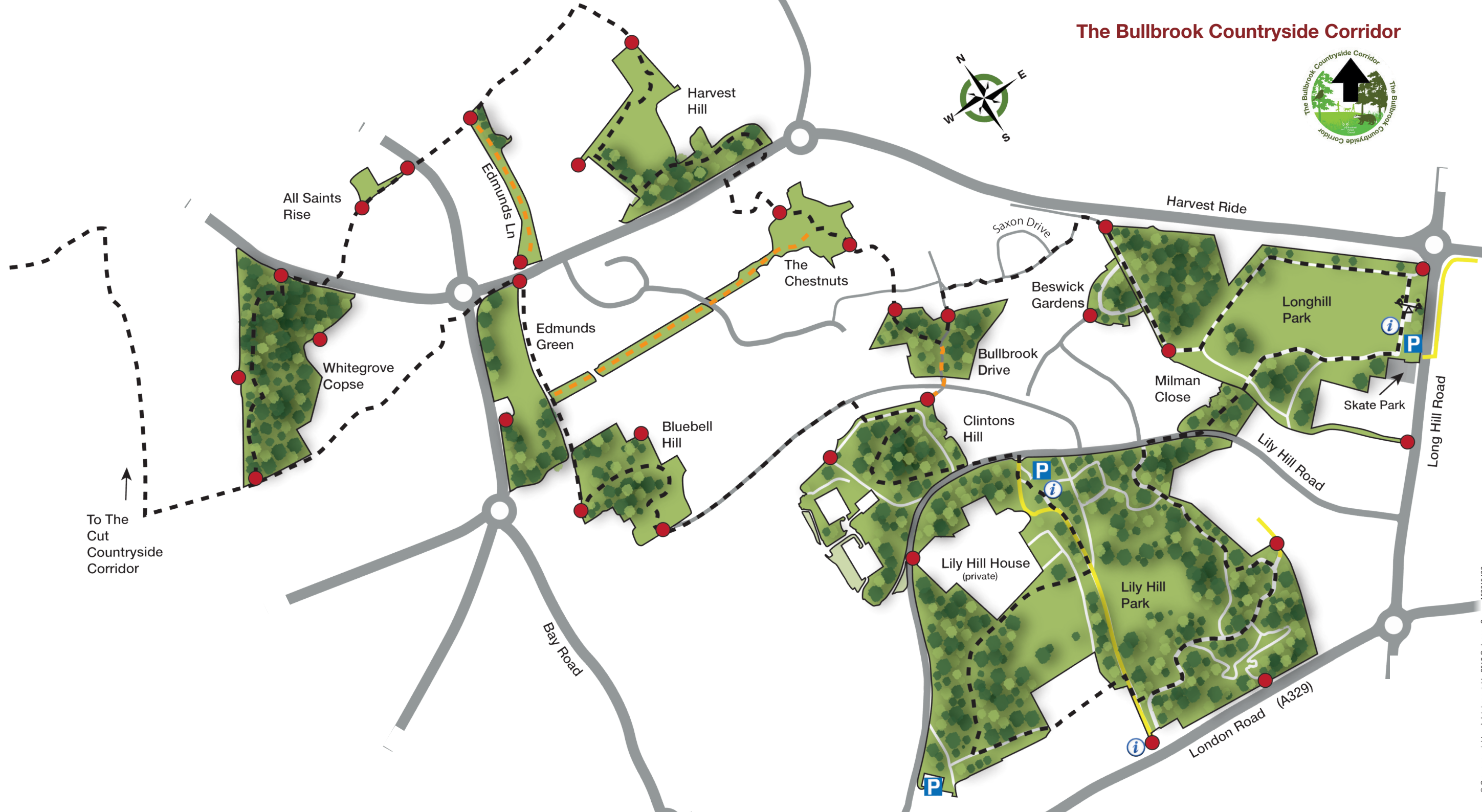


The Bullbrook Countryside Corridor



KEY:

- Circular route
- Alternative route
- Public footpath
- Site path
- Park entrance
- Parking
- Information point
- Play area



The Bullbrook Countryside Corridor

Follow surfaced paths and waymarkers to explore eight attractive green spaces in Bullbrook. Take in views of meadows, ponds, orchards and ancient woodland. The route partly follows The Bull Brook. Most of the river now runs underground in culverts, but there are still areas where you might spot the bright orange and blue flash of kingfishers as they hunt for small fish. Sites such as The Chestnuts still contain remnants of the old Warfield Park estate, which was owned by John Walsh in the 18th Century.

Facilities

- Places to sit, rest and enjoy the lovely views.
- Information boards at various points
- Car parking at Lily Hill Park and Longhill Park
- Children's play areas at Harvest Hill and Longhill Park
- Magnificent wood carvings at Lily Hill Park

Circular route

The waymarked route is 7.5km with alternative short-cuts available and individual sites to explore.

Longer walk

A further link is also available to visit neighbouring The Cut Countryside Corridor.

Did you know...?

Longhill Park is also host to the largest BMX skatepark in the borough.



Southern-marsh orchid, *Dactylorhiza praetermissa*



Kingfisher, *Alcedo Atthis*

Greenspaces to visit

See our short description for each green space along the route. For more information see our individual site pages on our website.

Lily Hill Park

A 23-hectare (56.8 acres) public open space located near the town centre. Take a step back in time and enjoy the grand views and attractive features that were experienced by Victorian ladies and gentlemen some 160 years ago.

Longhill Park

This 9.7 hectare (24 acre) site of hay meadow, woodland and a playground in Winkfield was formerly a refuse site that has since been reclaimed for wildlife and public recreation.

The Chestnuts

This small park connects to Chestnuts Lane and forms a green corridor running west to east. Historic features include an historic ice house and veteran Sweet Chestnut trees that are thought to be around 200 years old.



Harvest Hill

Contains a wildflower meadow, with scattered oak trees, small thickets and ponds. A viewing platform is available at the larger pond, known as Rachel's Lake, which is thought to be named after one of John Walsh's mistresses.



Veteran sweet chestnut tree, *Castanea sativa*

Whitegrove Copse

This ancient woodland in Warfield has probably been wooded since at least 1600 and possibly longer. The name may relate to the spring blossoms of hawthorn and crab apple. The site is managed by coppicing, which helps to preserve its important wildlife value.

Edmund's Green

The park contains a mixture of habitats and recreational facilities and is connected to the green corridor and cycleway known as Edmund's Lane.

Bluebell Hill

Contains a meadow and woodland, with views at the top of the hill overlooking Bracknell Town Centre.

Clintons Hill

Contains a small woodland on top of a small hill with several informal paths providing access throughout.



Gatekeeper butterfly, *Pyronia tithonus*



Badger, *Meles meles*



Edmund's Green wildflowers

View from Bluebell Hill

Lily Hill Park meadow

