



Bracknell Forest
SAFEGUARDING BOARD

Multi-Agency Safeguarding Arrangements

(In accordance with Working Together to Safeguard
Children 2023 and the Care Act 2014)

Foreword by statutory partners

The publication of these new multi-agency safeguarding arrangements (MASA) marks an important stage of development within our local partnership and sees significant changes to our existing arrangements. We build on strong foundations that exist in all areas of safeguarding and by aligning the work undertaken to safeguard children and adults we aim to ensure robust arrangements to keep vulnerable people safe regardless of their age.

Our MASAs ensure our statutory duties set out within The Care Act 2014 are discharged and are managed alongside the requirements set out within Working Together to Safeguard Children 2023.

In adopting these arrangements, we seek to maximise the effectiveness of efforts to safeguard children and adults and build on the ethos of our approaches to family safeguarding. Importantly, the MASAs further strengthen the support afforded to vulnerable young people as they transition into adulthood. Our approach also enables us to maximise the efficiencies of undertaking some functions across a wider range of local organisations, as well as those enabling safeguarding activities over a larger geographical footprint.

The approach we have endorsed ensures a clear focus on the protection of children but continues to support partnership working that safeguards all vulnerable members of our communities regardless of their age.



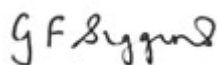
Susan Halliwell
Bracknell Forest Council



Jason Hogg
Thames Valley Police



Fiona Edwards
Frimley Integrated Care Board
Lead Safeguarding Partners



Grainne Siggins
Bracknell Forest Council



Steve Raffield
Thames Valley Police



Sarah Bellars
Frimley Integrated Care Board
Delegated Safeguarding Partners

Contents

1.	Introduction	3
2.	Key Requirements of Working Together to Safeguard Children 2023.....	3
3.	Safeguarding Adults under the Care Act 2014	4
4.	Purpose of Multi-Agency Safeguarding Arrangements.....	4
5.	Implementation principles	5
6.	Statutory Partners and Responsibilities	5
7.	Arrangements for Safeguarding Partners to Work Together.....	6
8.	Confirmation of Safeguarding Partners	7
9.	Arrangements for Independent Scrutiny	8
10.	Relevant Agencies	9
11.	Educational Providers	9
12.	Youth Custody and Residential Homes	10
13.	Local Child Safeguarding Practice Reviews (LCSPRs) and Safeguarding Adults Reviews (SARs)..	11
14.	Voice of Children, Young People, Families, and Adults.....	13
15.	Escalation of Concerns and Whistleblowing.....	13
16.	Safeguarding Training and Development.....	14
17.	Information Sharing	15
18.	Alignment with Local Threshold Document.....	15
19.	Use of Data and Intelligence	15
20.	Funding Arrangements.....	16
21.	Priorities for 2025 and beyond	17
22.	Conclusion.....	18

1. Introduction

The Bracknell Forest Safeguarding Board (BFSB) is committed to protecting the welfare of children, young people, and adults at risk across Bracknell Forest. As an all-age safeguarding board, we operate under the *Working Together to Safeguard Children 2023* statutory guidance and the *Care Act 2014*. Our multi-agency safeguarding arrangements (MASA) aim to ensure collaboration between all relevant partners to safeguard individuals of all ages, enabling them to live safe, healthy, and fulfilling lives.

The MASA framework provides the structure through which we work together to meet our legal duties, safeguard children and adults, and ensure that every agency is accountable for their role in preventing and responding to harm.

2. Key Requirements of Working Together to Safeguard Children 2023

The *Working Together to Safeguard Children 2023* guidance sets out critical responsibilities for local authorities and partner agencies. Key elements include:

- **Early Help:** Agencies must work together to provide effective early help services, identifying risks before they escalate into more significant concerns. The BFSB supports local early help strategies that bring together social services, education, health, and the voluntary sector to prevent harm before it occurs.
- **Safeguarding Lead:** Each agency must appoint a **Designated Safeguarding Lead (DSL)** who takes responsibility for safeguarding children within their organisation. DSLs must receive training to recognise signs of abuse, manage referrals, and work with multi-agency partners to protect children.
- **Local Child Safeguarding Practice Reviews (LCSPRs):** When a child suffers serious harm or dies as a result of abuse or neglect, local agencies must conduct a review to identify lessons learned. The BFSB has a statutory responsibility to carry out these reviews in a timely and transparent manner, ensuring that learning is used to improve local practices.
- **Information Sharing:** Effective safeguarding relies on timely and secure sharing of information between agencies. *Working Together 2023* stresses the importance of clear protocols for sharing information where it is in the best interests of the child.

- **Designated Health Professionals:** Health agencies must appoint designated professionals for safeguarding, such as **Designated Doctors** and **Designated Nurses** for safeguarding children, to ensure healthcare providers fulfil their statutory safeguarding duties.
- **Education and Training:** All partner agencies are required to ensure their workforce is appropriately trained in safeguarding children. This includes ensuring that professionals across sectors understand their roles, know how to identify signs of abuse, and know how to escalate concerns.

3. Safeguarding Adults under the Care Act 2014

In line with the *Care Act 2014*, BFSB also plays a key role in safeguarding adults at risk. Adults may be vulnerable to abuse and neglect for various reasons, including physical or learning disabilities, mental health conditions, or frailty due to age.

Adult safeguarding is underpinned by six key principles, embedded within the *Care Act*, which are:

- **Empowerment:** people being supported and encouraged to make their own decisions and informed consent.
- **Prevention:** it is better to take action before harm occurs.
- **Proportionality:** the least intrusive response appropriate to the risk presented.
- **Protection:** support and representation for those in greatest need.
- **Partnership:** local solutions through services working with their communities; communities have a part to play in preventing, detecting and reporting neglect and abuse.
- **Accountability:** accountability and transparency in delivering safeguarding.

4. Purpose of Multi-Agency Safeguarding Arrangements

Under *Working Together to Safeguard Children 2023* and the *Care Act 2014*, the Bracknell Forest Safeguarding Board's MASA is designed to:

- **Protect children from harm:** Ensuring children grow up in safe environments and their welfare is promoted.

- **Support adults at risk:** Safeguarding adults who, due to care and support needs, are vulnerable to abuse and neglect.
- **Facilitate collaboration:** Promoting effective multi-agency working across health, social care, education, police, and other sectors to ensure safeguarding arrangements are coordinated, effective, and accountable.

5. Implementation principles

In February 2024, BFSB's statutory partners agreed that Bracknell Forest will retain an all-age Safeguarding Board. When reviewing the multi-agency safeguarding arrangements it was agreed that the following principles would be applied:

- To retain an equal focus on safeguarding arrangements for both children and adults.
- To ensure new roles / responsibilities, as defined within the statutory guidance, are implemented in the most effective way to maintain existing working arrangements.
- To retain a focus on the Bracknell Forest local authority geographic area, whilst recognising that partners operate across wider footprints, including other local authorities.
- To ensure independent scrutiny.
- To continue to work collaboratively with neighbouring safeguarding partnerships where appropriate.

6. Statutory Partners and Responsibilities

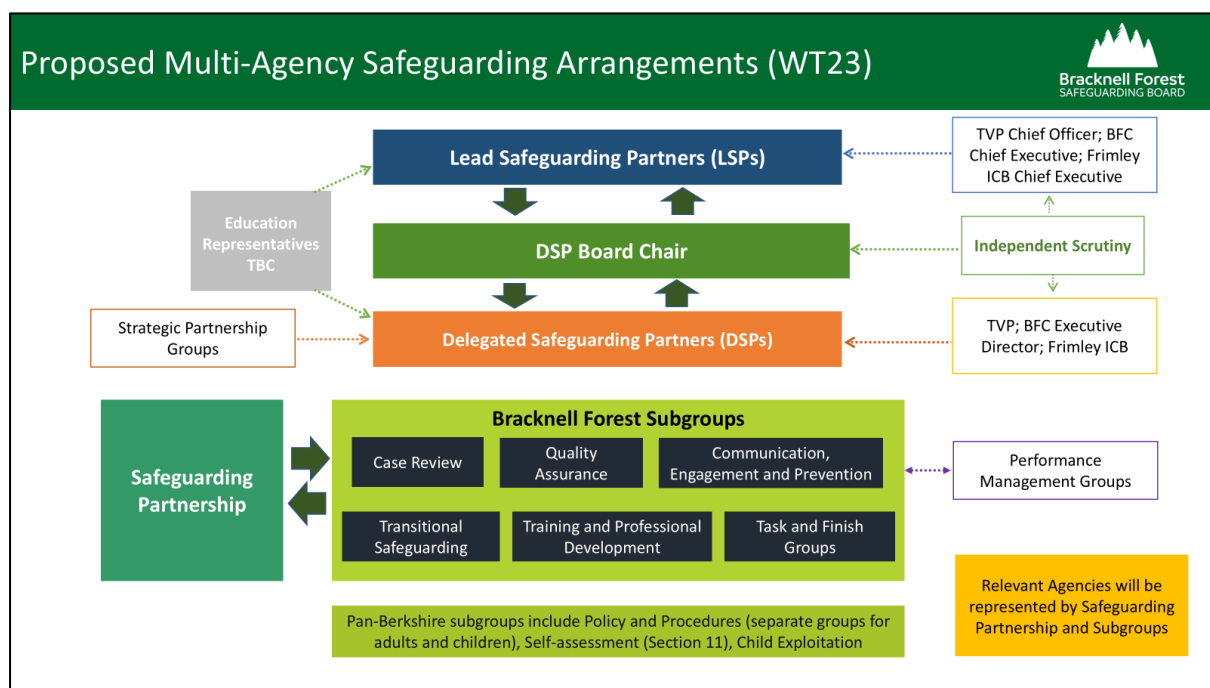
Under *Working Together to Safeguard Children 2023*, the responsibility for local safeguarding arrangements lies with three key statutory partners:

- **Bracknell Forest Borough Council** (Local Authority)
- **Thames Valley Police** (Local Policing Body)
- **Frimley Integrated Care Board (ICB)** (Health Services)

These statutory partners share joint responsibility for safeguarding children and young people. Their collective duty is to ensure that the local multi-agency safeguarding system is effective and delivers positive outcomes for children. Each partner is responsible for:

- **Local Authority:** Leading on children's social care services and working closely with families and other services to provide early help and safeguarding responses.
- **Health:** Ensuring that health services, including mental health, general practitioners (GPs), and hospital services, contribute to safeguarding by identifying risks, sharing information, and providing medical support.
- **Police:** Investigating safeguarding concerns, protecting children from harm, and collaborating with other agencies to provide a coordinated response to criminal activity, including child exploitation and abuse.

7. Arrangements for Safeguarding Partners to Work Together



The Board is responsible for supporting the co-ordination of multi-agency arrangements to protect and safeguard children and adults in Bracknell Forest and for monitoring their effectiveness at a multi-agency strategic level and to be assured that:

- Local safeguarding arrangements are in place as defined by the Care Act 2014 and the Children Act 2004 and all relevant statutory guidance.
- Safeguarding practice is person-centred and outcome focused.
- Safeguarding practice is continuously improving and enhancing the quality of life of adults and children in its area.

- Work is undertaken collaboratively to prevent abuse and neglect where possible.
- Agencies and individuals give timely and proportionate responses when abuse or neglect have occurred.

The three key agencies, namely health, police and the local authority (the Board) will oversee and coordinate multi-agency arrangements for protecting children and adults, deliver joint strategies and lead the safeguarding system. The Board is also responsible for monitoring and evaluating the effectiveness of what is done by partners individually and collectively to safeguard and promote the welfare of children and adults and advising them on ways to improve. This is primarily achieved through the Performance and Impact Framework.

The Board is supported in its work by the Safeguarding Partnership and a number of subgroups; each operates to its own Terms of Reference (ToR). Short term task and finish groups may also be set up to focus on the implementation of specific objectives or projects.

The Safeguarding Board has the following subgroups:

- Case Review
- Quality Assurance
- Communication, Engagement & Prevention
- Training and Professional Development
- Transitional Safeguarding
- Children's Policy and Procedures (operates on Berkshire footprint)
- Adults Policy and Procedures (operates on Berkshire footprint)
- S11/Self-Assessment (operates on Berkshire footprint)
- Exploitation (operates on Berkshire footprint)

The Safeguarding Board links to the following groups:

- Strategic Partnerships Group
- Child Death Overview Panel
- Serious Violence and Exploitation

8. Confirmation of Safeguarding Partners

As defined within WT23, the head of each statutory safeguarding partner will be referred to as 'Lead Safeguarding Partners' (LSP). They have appointed 'Delegated Safeguarding Partners' (DSP). LSPs are senior representatives from local authorities, integrated care boards, and the police. They hold strategic leadership and accountability for safeguarding arrangements. DSPs

are responsible for the operational delivery of safeguarding duties and have sufficient seniority to make decisions on behalf of the LSP. Further details of the LSP and DSP role can be found here: [Strategic leadership and accountability](#).

The following roles have been confirmed as LSPs and DSPs in Bracknell Forest:

Lead Safeguarding Partners:

- Chief Executive: Bracknell Forest Council
- Chief Constable: Thames Valley Police
- Chief Executive: Frimley Integrated Care Board

WT23 guidance acknowledges that in cases where the boundaries of the police and ICB extend over multiple local authority areas, LSPs may decide to meet at a more regional level so they can discuss all arrangements within their remit and ensure consistency of funding and resources¹. As Thames Valley Police and Frimley ICB each cover multiple local authority areas, it is proposed that the LSP will meet the Board once a year and will have regular meetings with the DSP to keep abreast of local issues.

Delegated Safeguarding Partners:

- Executive Director (People): Bracknell Forest Council
- Head of Local Command Unit (Chief Superintendent): Thames Valley Police
- Executive Chief Nurse: Nursing & Quality/Deputy Chief Nurse: Safeguarding: Frimley Integrated Care Board

Chairing arrangements

The Board will be chaired by one of the Delegated Safeguarding Partners. Initially, this role will be filled by the Executive Director of People from Bracknell Forest Council. They will be supported by the Business Unit and the Independent Scrutineer.

9. Arrangements for Independent Scrutiny

The Bracknell Forest Safeguarding Board will ensure scrutiny arrangements:

1. provide an objective assessment of the effectiveness of local safeguarding arrangements and help ensure that safeguarding partners are fulfilling their responsibilities.

¹ [Working together to safeguard children 2023: statutory guidance \(publishing.service.gov.uk\)](https://www.publishing.service.gov.uk/government/uploads/system/uploads/attachment_data/file/90444/Working_together_to_safeguard_children_2023_statutory_guidance.pdf)

2. offer critical challenge and support to the safeguarding partners, ensuring that the arrangements are robust and effective.
3. contribute to the Board's annual report by assessing the effectiveness of the safeguarding arrangements.
4. engage with a wide range of stakeholders, including children and families, to gather their views and experiences.

These arrangements are designed to foster a culture of continuous improvement and accountability in safeguarding practices.

10. Relevant Agencies

If the local arrangements are to be successful, the Safeguarding Board will need the support of senior leaders who can provide data and intelligence to support the routine assessment of safeguarding effectiveness.

In addition to Thames Valley Police, Bracknell Forest Council and Frimley Integrated Care Board, the following agencies must be included:

- NHS Foundation Health Trusts
- Early help provision including Children's Centres and Early years settings.
- Residential homes for children.
- Schools (including independent schools, academies and free schools).
- National Probation Service leaders.
- Key local voluntary, community, social enterprise and faith sector partners.
- Sports Clubs.

The Safeguarding Board will work with representatives of these organisations to ensure that they are aware of their responsibilities as relevant partners and to formalise arrangements.

11. Educational Providers

The Safeguarding Board will continue to work with the DfE representatives to establish the most effective inclusion of educational providers in the multi-agency arrangements at the local level. These will include all schools (including independent schools, academies and free schools), colleges, early years and childcare settings and other educational providers including alternative provision, home educators and adult learning providers. The principles of co-production will underpin work to ensure that all key stakeholders are able to help design a

sustainable and effective mechanism to strengthen the contribution of those responsible for safeguarding within this sector. Safeguarding partners will continue to work together to establish educational sector involvement.

12. Youth Custody and Residential Homes

The Bracknell Forest Safeguarding Board is dedicated to ensuring the safety and well-being of all children, young people and vulnerable adults in residential care and youth custody provision, whether within their local authority area or outside it.

A number of measures are in place to ensure the quality and safety of commissioned services (residential provision for both adults and children and a range of other care and support services). These include due diligence, contract monitoring, on site quality assurance visits and the Care Governance Board.

For residential homes within the area, the council commissions a range of services to meet the needs of adults and children. Rigorous oversight is achieved through regular inspections and quality assurance processes. When placing children in homes or youth custody outside the area, they adhere to the 'Working Together to Safeguard Children 2023' guidance. This includes thorough assessments, notifying host authorities, and ongoing monitoring to ensure the suitability and safety of placements. There are currently five residential homes located within the borough providing services for children and 13 for adults.

The Bracknell Forest Care Governance Board (CGB) oversees the quality and safety of services commissioned by the council. If a quality and safety concern is raised about a commissioned service, consideration is given as to whether the concerns are significant enough to embargo further placements with the service, whilst activity is undertaken to investigate the concerns and to safeguard individuals. Care Governance Board meetings are multi-agency and decisions regarding embargos are made collectively between commissioners, operational colleagues and Health Partners. The Care Governance Board meets monthly to review embargo decisions and agree further interventions as appropriate.

Bracknell Forest's catchment youth offender institution is Feltham Prison and Young Offender Institution (YOI). Children placed there receive support in line with national standards that includes having appropriate safeguarding measures in place. Each child is assigned a caseworker located within the YOI who works collaboratively with health education and local authority staff, and who will raise and where necessary escalate safeguarding concerns. Children on remand automatically become 'Children Looked After' and are allocated a social

worker prior to their sentencing, who along with our local Youth Justice Team (YJT) then visit them regularly throughout their sentence. Such support ensures health, welfare and educational needs are reviewed on each occasion. Similarly, where children within the YOI are the subject of Multi Agency Public Protection Arrangements (MAPPA), representatives from the YOI are invited to attend to consider the child's needs, vulnerabilities and their risk to the public.

Multi-agency resettlement planning for children begins as soon as they are placed in custody to ensure their transition into the community is well supported. A specialist member of YJT staff together with their education lead liaise with the YOI to ensure any needs identified (e.g. within EHCP plans) are address and the risk of re-offending is minimised.

The local authority works closely with host authorities to ensure that all children and young people have access to necessary support and services, such as healthcare and education. They are committed to safeguarding, and they strive to provide consistent, high-quality care for all, regardless of their placement location.

13. Local Child Safeguarding Practice Reviews (LCSPRs) and Safeguarding Adults Reviews (SARs)

Working Together 2023 requires that Rapid Reviews (RR) and where necessary Local Child Safeguarding Practice Reviews (LCSPRs) are held if a child suffers significant harm or dies as a result of abuse or neglect, and where there are concerns about how agencies worked together.

Similarly, under the *Care Act 2014*, the BFSB is responsible for conducting Safeguarding Adults Reviews (SARs) when an adult at risk experiences serious harm or death, and there is reason to believe that partner agencies could have worked more effectively to prevent it.

Both reviews aim to improve practice by identifying lessons learned, and their findings are shared across all relevant agencies to improve future safeguarding responses.

Using the RR process: any agency can notify BFSB of a serious incident they think should be considered for a Safeguarding Adult Review (SAR) and/or a Local Child Safeguarding Practice Review (LCSPR). BFSB require that notifications are be made promptly and given priority over other learning processes such as the commissioning of a Serious Incident Review or its equivalent.

Notifications involving children will follow the guidance set out in the [pan-Berkshire policies and procedures](#) (in respect of children) and reflect the requirements of 16C(1) of the Children Act 2004.

Notifications involving adults will follow the legislative requirements as set out in the Care Act 2014 and [section 2.9 of the pan Berkshire Safeguarding Adults Policy and Procedures](#).

Commissioning a review: a RR meeting will be convened, at which the delegated representatives of the three statutory partners (along with representatives from other relevant organisations) consider all the information that has been gathered and whether or not the criteria is met to commission a SAR or LCSPR. As part of the meeting, the delegated representatives will:

- Review the facts about the case.
- Discuss whether there is any immediate action needed to ensure the safety of an individual and to share any learning appropriately.
- Consider the potential for identifying improvements to safeguard individuals.
- Consider examples of good practice.
- Where a review does not recommend a SAR and / or LCSPR, it will agree what form of learning review, if any, is appropriate. In some cases, the RR process may identify key local learning that can be quickly acted upon, removing the need for any further review.

Publication and dissemination of learning: BFSB requires that learning identified at any stages of the RR process and during case reviews is shared as soon as is practicable. All reviews are anonymised before publication. LCSPRs are published on the [Board's website](#) (unless agreed with the National Panel that it would not be in the best interests of the child, given the small size of Bracknell Forest local authority), sent to the [National Case Review Collection](#): a repository of published reports (hosted by the NSPCC) and emailed out to all partner organisations. SARs are published on the [Board's website](#), sent to the national [SAR library](#) and emailed out to all partner organisations.

Learning from case reviews is enhanced by a multi-agency learning brief. These are also sent to the relevant national data base, published on the Board's website and emailed out to all partners. Multi-agency learning events are held for practitioners once a review is complete. These short events highlight any good practice identified and helps practitioners and managers consider how the identified learning can help strengthen practice and improve local systems.

14. Voice of Children, Young People, Families, and Adults

The Communications, Engagement and Prevention subgroup ensures all partners and strategic partnerships are aware of the need to receive feedback from the people to whom they provide services. This will inform learning and drive service improvement. The subgroup also co-ordinates specific projects with vulnerable groups of people to co-produce safeguarding awareness and campaign information.

The Case Review subgroup will seek to ensure that children and adults voices are present in all safeguarding reviews, to improve the understanding of their experience. Family members may also represent the views and wishes. Where there is no known family representative a decision to engage advocacy may be taken.

The Quality Assurance subgroup carries out multi agency audits that includes reviews into how the voice of the person feature within cases, and how person-centred practice feature. The subgroup also reviews outcome data and consultations regarding people's experiences of safeguarding.

The voice of vulnerable people will also be central to the work of the Independent Scrutineer and will strengthen the assurance required by Safeguarding Partners.

15. Escalation of Concerns and Whistleblowing

BFSB recognises the importance of partner organisations working collaboratively and to explore a range of perspectives and professional opinions. Where differences of opinion between staff remain unresolved it is imperative that professionals work to resolve this as a matter of urgency.

Established local multi-agency arrangements are designed to further support single-agency procedures and benefit from the endorsement of key partner organisations.

These include:

- arrangements for [Resolving Professional Difference of Opinion and Escalation](#)
- arrangements for [Resolving Professional Disagreements about Safeguarding Adults](#) (Escalation Policy)

While BFSB recognises that whistleblowing can be seen to be independent of the above procedures, it too requires organisations maintain cultures that encourage of transparency and supporting their staff in being able to access and use whistle blowing procedures. The BFSB multi-agency [whistleblowing procedures](#) are designed to complement those available within partner organisations and provides guidance as to how concerns should be raised within the workplace.

16. Safeguarding Training and Development

Training plays a critical role in ensuring that all staff and volunteers across agencies are equipped to carry out their safeguarding responsibilities. The Bracknell Forest Safeguarding Board is committed to ensuring that all partner agencies provide high-quality safeguarding training.

BFSB has established agreed standards to help support partners training activities. In addition, the Board offers on a model competency framework to enable partners to implement and evaluate the effectiveness of their training.

The Training and Professional Development Framework emphasises accountability, continuous improvement, and collaboration. This framework is overseen by the Training and Professional Development Subgroup which gathers information on training activities and ensures that these activities enable the workforce to develop the necessary skills and confidence to protect vulnerable people effectively. The subgroup also has the following roles:

- **Promote Key Themes:** Highlight specific themes for inclusion in training based on learning from case reviews, audits, policy changes, and other matters identified by the Safeguarding Board and its sub-groups.
- **Feedback and Dissemination:** Receive feedback on individual partners' safeguarding training and disseminate learning from case reviews, including evaluating the impact.
- **Identify Training Needs:** Identify training needs that the Safeguarding Board can consider addressing by organising multi-agency training sessions.
- **Promote Multi-Agency Training:** Promote multi-agency training sessions conducted by partner organisations and the Board's subgroups, including case review learning events and the bi-annual safeguarding forum.
- **Data Collection and Reporting:** Collate data on partners' safeguarding training and its impact for inclusion in the Safeguarding Board's Annual Report.

By integrating safeguarding principles for both adults and children, the Board ensures that the workforce is equipped with the necessary skills and knowledge to protect vulnerable individuals effectively.

17. Information Sharing

Effective safeguarding is fundamentally dependent on the timely and secure exchange of information between agencies. The Care Act 2014 and 'Working Together to Safeguard Children 2023' guidelines emphasise the necessity of clear and robust protocols for sharing information, especially when it serves the best interests of the [child](#) and [adults](#) at risk.

The Bracknell Forest Safeguarding Board (BFSB) partners, which include schools, social care services, health organisations, and the police, have established comprehensive information-sharing agreements. These agreements are designed to comply with the General Data Protection Regulation (GDPR) while prioritising the safety and well-being of children and adults at risk.

18. Alignment with Local Threshold Document

The Bracknell Forest Safeguarding Board is committed to ensuring a consistent and effective response to safeguarding concerns through their multi-agency safeguarding arrangements. By aligning with the [Bracknell Forest Children's Thresholds Guidance 2023](#), the Safeguarding Board will ensure that all partner agencies have a shared understanding of the levels of need and intervention required. This alignment facilitates effective collaboration, clear pathways for support, and ensures that all professionals are trained and aware of how to apply the thresholds in their practice. Quality assurance processes further ensure that the guidance is followed correctly, providing the best possible outcomes for children and families.

19. Use of Data and Intelligence

The effective use of data and intelligence is crucial for safeguarding both children and adults. Personal data is essential for conducting safeguarding adult reviews and local safeguarding children practice reviews. Additionally, general data helps identify trends and patterns in safeguarding activities, abuse, and neglect.

Data Collection and Intelligence Gathering:

- **Bi-Monthly Meetings:** Intelligence will be gathered at Safeguarding Partnership meetings with relevant agency representatives.
- **Operational Partnership Groups:** Links with operational partnership groups, such as Community Safety Partnership subgroups, will facilitate the sharing of intelligence. The Serious Violence and Exploitation subgroup will use data and intelligence to support the implementation of a joint Safeguarding Board / Community Safety Partnership all age exploitation strategy. This will include contextual safeguarding.
- **Strategic Partnerships:** Meetings organised under a memorandum of understanding between the Safeguarding Board and other strategic partnerships within Bracknell Forest will further support intelligence gathering. These strategic partnerships include the Community Safety Partnership, the Health and Wellbeing Board, Children and Young Peoples Partnership and the Corporate Parenting Board.

Performance and Impact Management Framework (PIF):

- **Framework Overview:** The PIF, introduced following recommendations from a peer review of local multi-agency safeguarding arrangements, consolidates data, information, and intelligence gathered within the multi-agency safeguarding structure of subgroups and through links to other groups and partnerships.
- **Content of PIF:** The PIF contains comprehensive data on safeguarding activities, including incident reports, case reviews, and trend analyses.
- **Performance Management Group:** This group, consisting of the chairs of subgroups, analyses the PIF quarterly. They produce a summary report for the DSPs to discuss at their meetings, evaluating the impact of the work.
- **Quality Assurance Subgroup:** This subgroup provides detailed analysis of the data and information before the Performance Management Group meeting.
- **Independent Scrutineer:** An Independent Scrutineer will add an additional layer of assurance, ensuring the integrity and effectiveness of the safeguarding processes.

By examining the data and intelligence in this way the Board can make informed decisions, identify areas for improvement and ensure that safeguarding practices are effective and responsive to the needs of both children and adults.

20. Funding Arrangements

As there is no national formula for funding, levels of contribution are agreed locally. Bracknell Forest Council currently contribute most of the Board's direct funding. Bracknell Forest Council also hosts the Safeguarding Board's Business Unit. The ICB and Thames Valley Police are the other statutory partners who contribute to the Board. Broadmoor Secure Hospital also give £550 annually.

Bracknell Forest Council will continue to provide the funding at a local level. Thames Valley Police and Frimley Health Integrated Care Board will agree funding levels at a Berkshire level through discussions of LSPs.

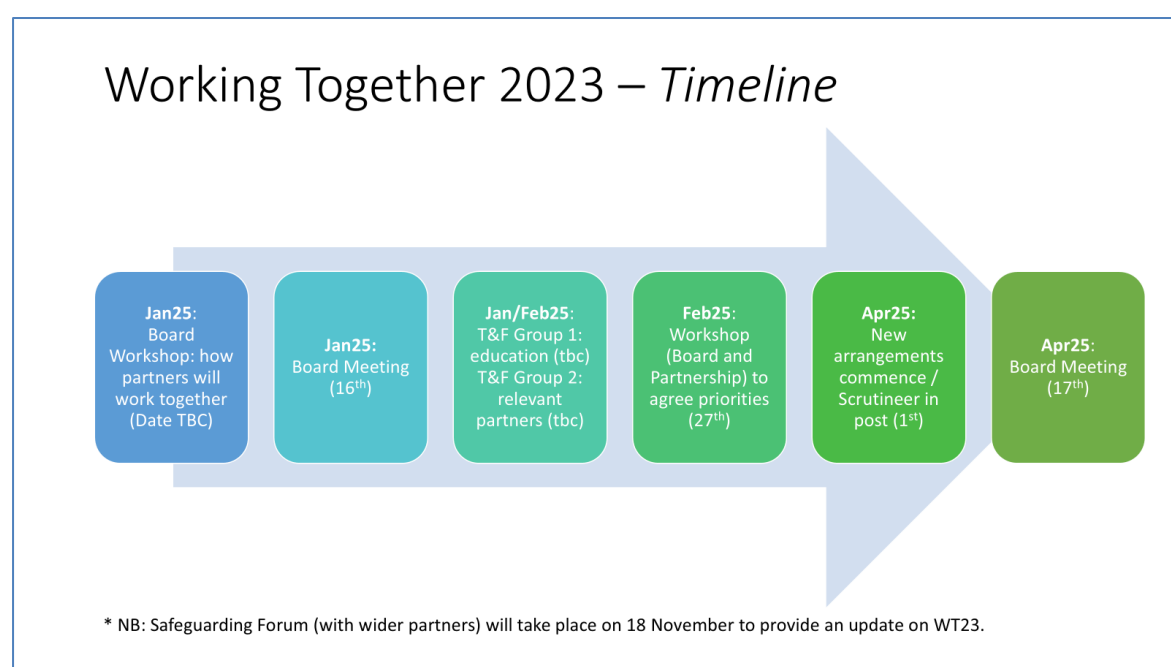
21. Priorities for 2025 and beyond

BFSB intends to commence the implementation of the revised MASAs from the 1st April 2025. During the transition period to 1st April 2025 the current Independent Chair and Scrutineer will remain in post.

To ensure the ongoing effectiveness of our multi-agency safeguarding arrangements, BFSB will undertake the following activities:

- **Host a workshop** to agree how partners will strengthen the way they work together in practice.
- **Facilitate work** to strengthen partnerships with schools and educational institutions to ensure robust safeguarding measures are in place, particularly around online safety, bullying, and mental health support.
- **Facilitate** work with representatives of local organisations to ensure that they are aware of their responsibilities as relevant partners and to formalise arrangements.
- **Appoint an Independent Scrutineer.**
- **Facilitate a workshop to agree priorities** for 2024 - 26 and beyond.

Working Together 2023 Timeline



22. Conclusion

The Bracknell Forest Safeguarding Board is dedicated to safeguarding all individuals, from children and young people to vulnerable adults, by working together effectively with statutory and voluntary partners. Our multi-agency safeguarding arrangements, guided by the *Working Together to Safeguard Children 2023* and the *Care Act 2014*, provide the framework to ensure that every child and adult at risk in Bracknell Forest is protected and supported.

For more information, or to report a safeguarding concern, please visit our website <http://bracknellforestsafeguarding.gov.uk> or contact us at bfsb@bracknell-forest.com
