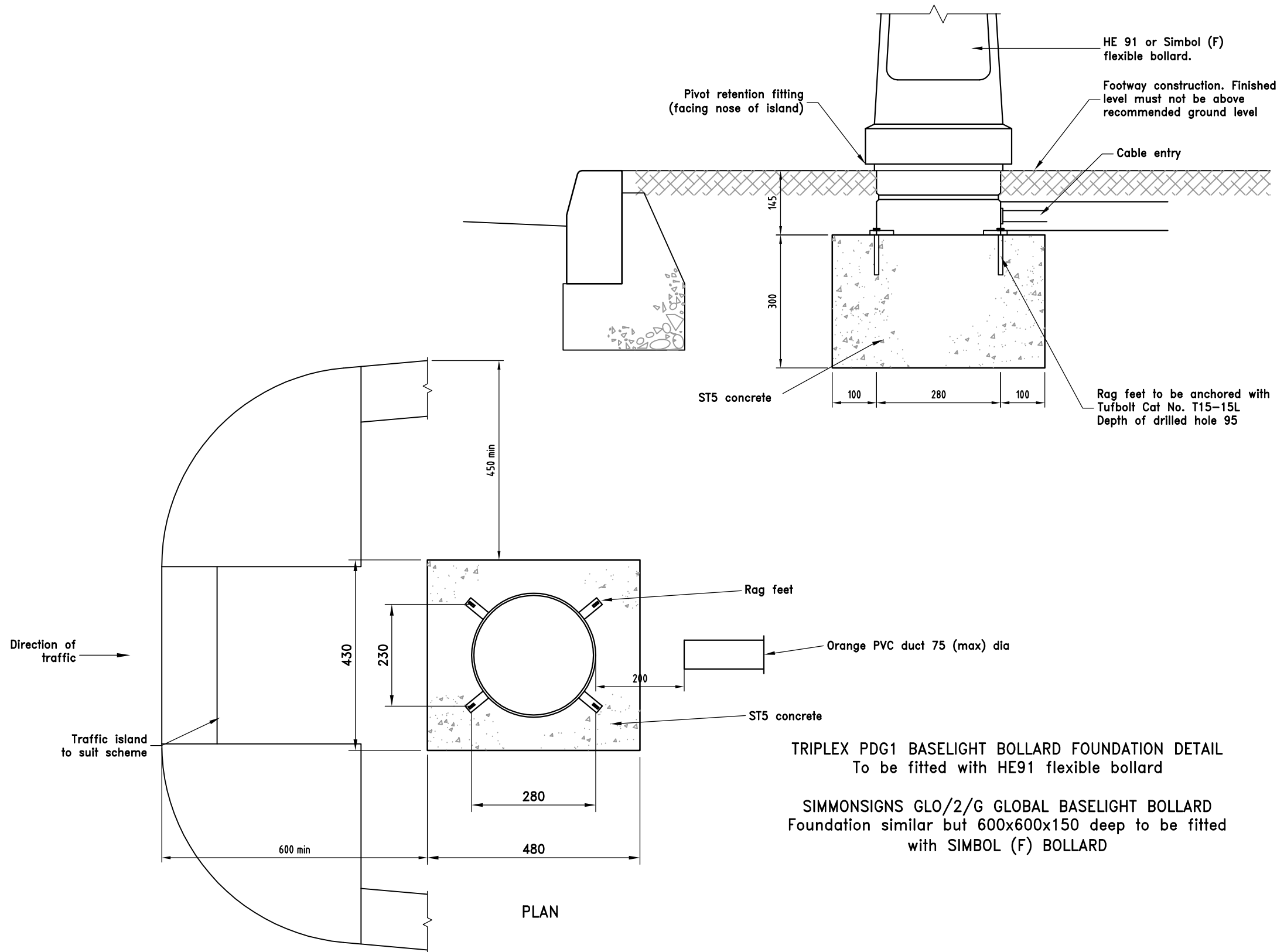


- Notes
1. All dimensions in millimetres.
  2. All equipment to be to the specification and/or approval of the Engineer.
  3. All equipment to be sited within the highway boundary.
  4. Bollards must be Baselight Triplex HE91 with PDG1 base or Simmonsigns Symbol (F) with SBL2 base unless otherwise approved by the Engineer.
  5. Bollards must be fitted according to the manufacturers instructions.
  6. PDG1 bollard base must be fitted with M8 x 20 stainless steel set pins and nuts.
  7. Bollards must be sited with the retainer bolts in line with the traffic flow.
  8. Bollards must be sited with the hinged side facing approaching traffic.
  9. An infra-red photocell, factory fitted, is required in all bollards.
  10. All illuminated signs must be identified by a unique number stencilled in black paint on the rear. The numbers will be provided by the Engineer.



Do not scale this drawing

A	MAR 11	Change of drawing title	KJW	PAT
Rev	Date		Checked	

Project  
**STANDARD DRAWINGS**

Title  
**ILLUMINATED TRAFFIC BOLLARD FOUNDATION DETAILS**

Drawing No.  
**SD/1300/01A**

Scale **NOT TO SCALE** Date **MAY 04**

Department of Environment,  
Culture & Communities

